

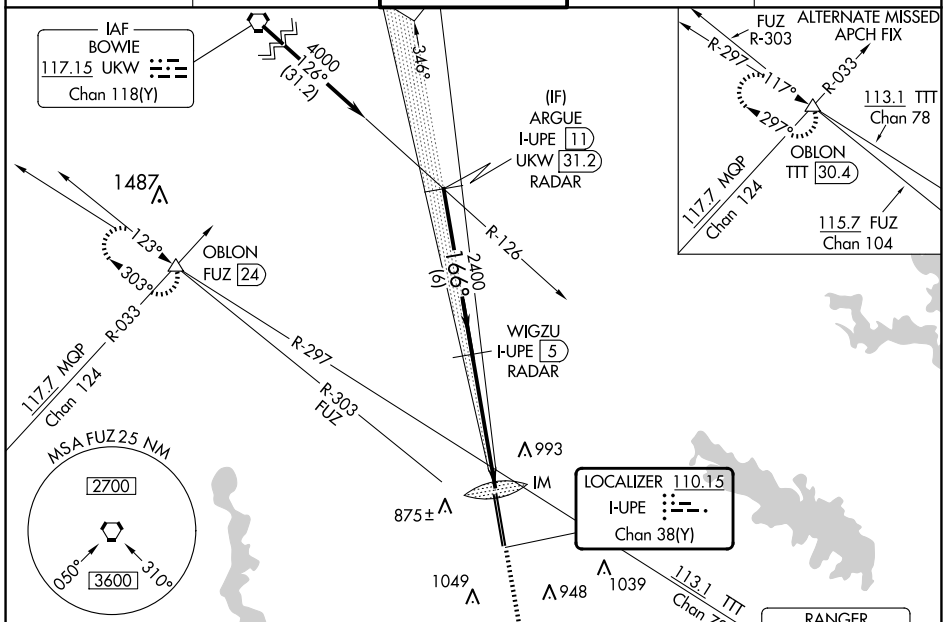
LOC/DME I-UIPE <b>110.15</b>	APP CRS <b>166°</b>	Rwy Idg 16L 16R	16L <b>10600 10410</b>
Chan <b>38(Y)</b>	<b>166°</b>	TDZE <b>723 721</b>	Apt Elev <b>723 723</b>

# ILS or LOC RWY 16L

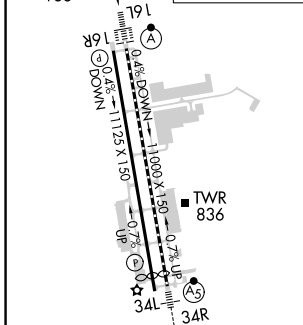
PEROT FLD/FORT WORTH ALLIANCE (A.F.W)

DME or RADAR required.	ALSF-2	MISSED APPROACH: Climb to 1200 then climbing right turn to 3000 on heading 330° and FUZ VORTAC R-303 to OBLON INT/FUZ 24 DME and hold.
------------------------	--------	--

ATIS <b>126.925</b>	LONE STAR APP CON <b>118.1 306.95</b>	ALLIANCE TOWER <b>135.15 257.9</b>	GND CON <b>132.65 306.2</b>	CLNC DEL <b>128.725</b>
------------------------	--	---------------------------------------	--------------------------------	----------------------------



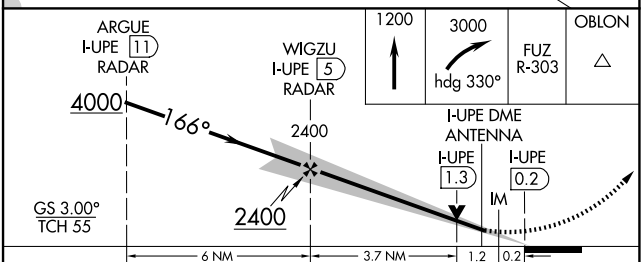
ELEV 723	<b>D</b> TDZE 16L 723
	TDZE 16R 721



TDZ/CL Rws 16L and 34R  
HIRL Rws 16L-34R and 16R-34L  
REIL Rws 16R and 34L

FAF to MAP 5.1 NM

Knots	60	90	120	150	180
Min:Sec	5:06	3:24	2:33	2:02	1:42



CATEGORY	A	B	C	D	E
S-ILS 16L	923/18 200 (200-1/2)				
S-LOC 16L	1220/24	497 (500-1/2)	1220/50		497 (500-1)
SIDESTEP 16R	1240-1	519 (600-1)	1240-1 1/2 519 (600-1 1/2)	1240-2	519 (600-2)
CIRCLING	1240-1	1320-1	1360-1 3/4 637 (700-1 3/4)	1360-2	1380-2 1/4 657 (700-2 1/4)
	517 (600-1)	597 (600-1)			

# ILS or LOC RWY 16L

SC-2, 20 MAR 2025 to 17 APR 2025

SC-2, 20 MAR 2025 to 17 APR 2025