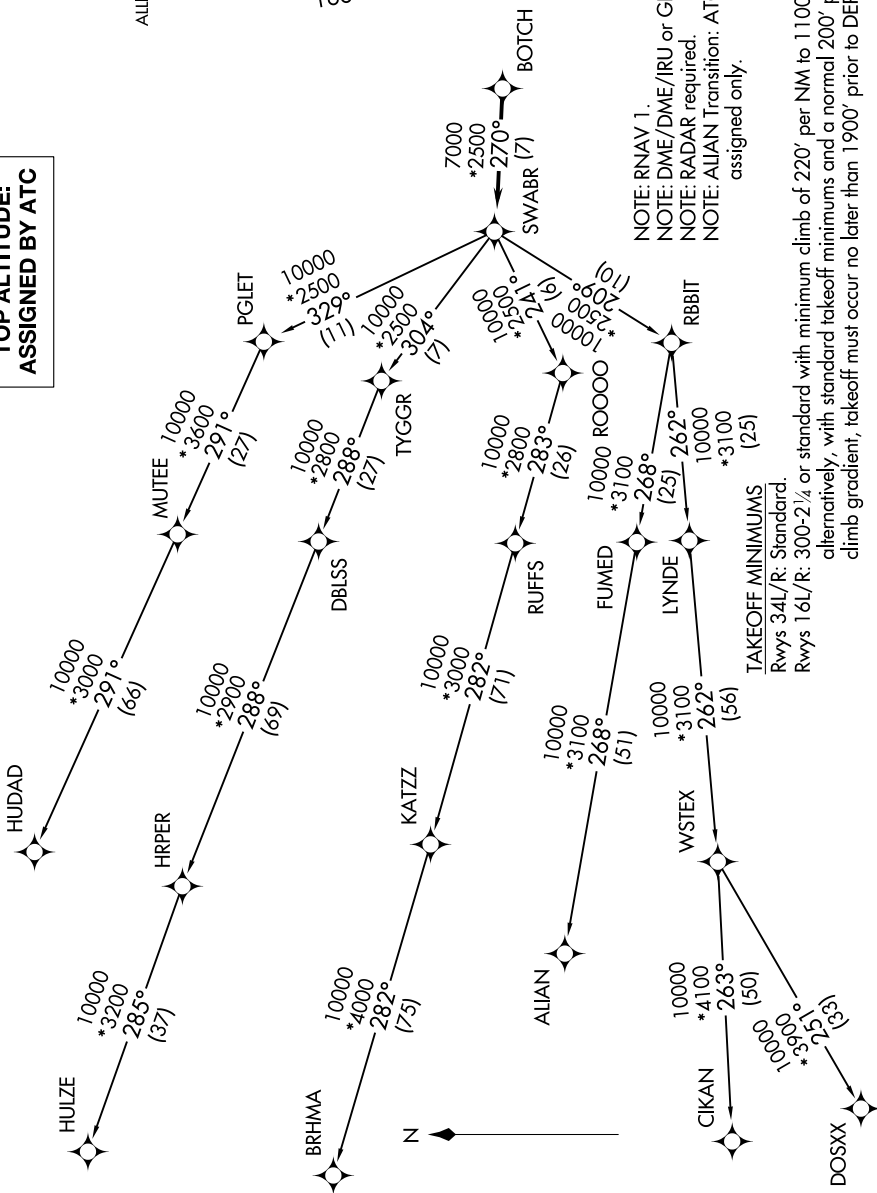
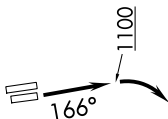


# SWABR ONE DEPARTURE (RNAV)

FORT WORTH, TEXAS

### TOP ALTITUDE: ASSIGNED BY ATC

LONE STAR DEP CON  
118.1 306.95  
ATIS  
126.925  
CLNC DEL  
128.725  
GND CON  
132.65 306.2  
ALLIANCE TOWER  
135.15 257.9



NOTE: RNAV 1.  
NOTE: DME/DME/IRU or GPS required.  
NOTE: RADAR required.  
NOTE: ALIAN Transition: ATC assigned only.

TAKEOFF MINIMUMS  
Rwys 34L/R: Standard.  
Rwys 16L/R: 300-2¼ or standard with minimum climb of 220' per NM to 1100, or alternatively, with standard takeoff minimums and a normal 200' per NM climb gradient, takeoff must occur no later than 1900' prior to DER.

NOTE: Chart not to scale.

(CONTINUED ON FOLLOWING PAGE)