

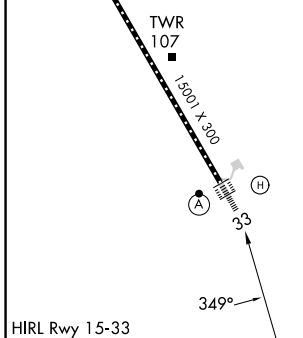
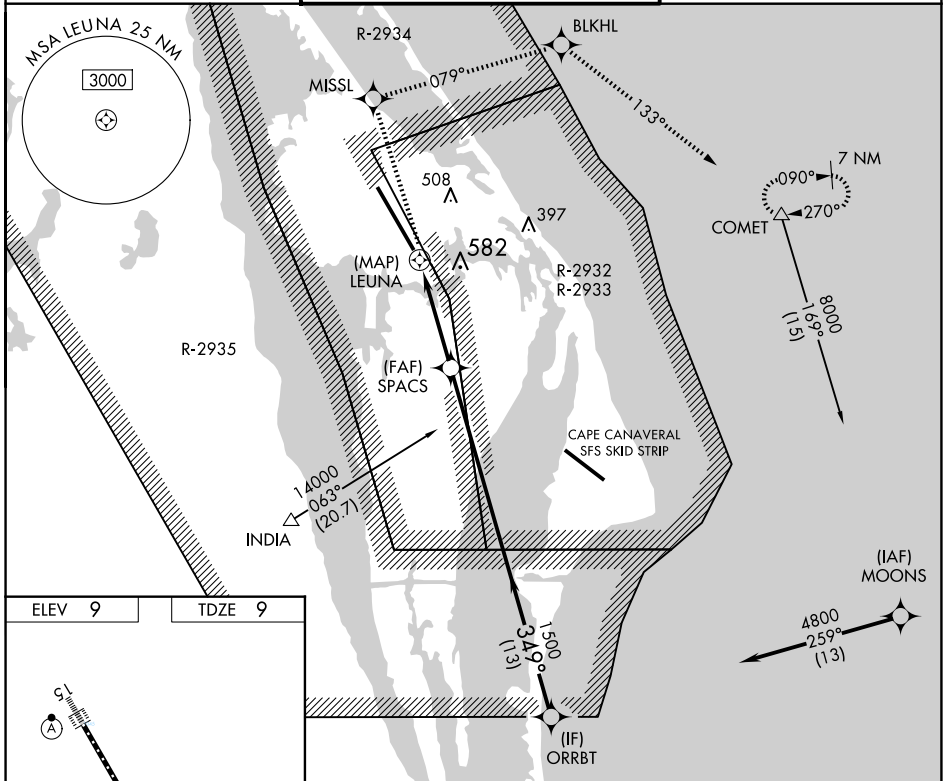
APP CRS	Rwy Idg	15001
349°	TDZE	9
	Apt Elev	9

RNAV (GPS) RWY 33

SPACE FLORIDA LAUNCH AND LANDING FACILITY (TTS)

RNP APCH-GPS.		ALSF-2	MISSED APPROACH: Climb to 8000 direct MISSL and right turn on track 079° to BLKHL and on track 133° to COMET and hold, continue climb-in-hold to 8000.
<p>Rwy 33 helicopter visibility reduction below 1 SM NA. Inop table does not apply. Use Melbourne altimeter setting.</p>			

ORLANDO APP CON 134.95 281.425	NASA TOWER ★ 128.55 (CTAF) 284.0	GND CON 121.75
------------------------------------------	--------------------------------------------	--------------------------



8000	MISSL	BLKHL	COMET	ORRBT
↑				
	tr 079°	tr 133°		
				4800
				Procedure Turn NA
0.5		4 NM		13 NM
CATEGORY	A	B	C	D
LNAV MDA	540-1 530 (600-1)		540-1¼ 530 (600-1¼)	
CIRCLING	540-1 531 (600-1)		1020-3 1011 (1100-3)	

SE-3, 20 MAR 2025 to 17 APR 2025

SE-3, 20 MAR 2025 to 17 APR 2025