

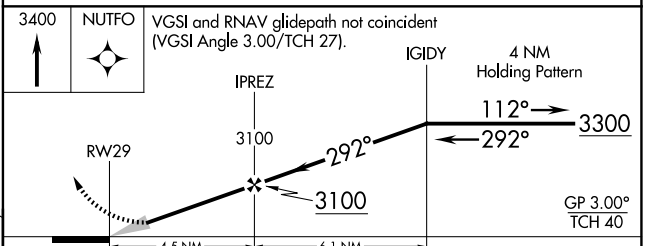
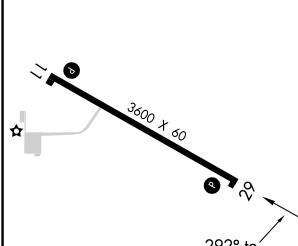
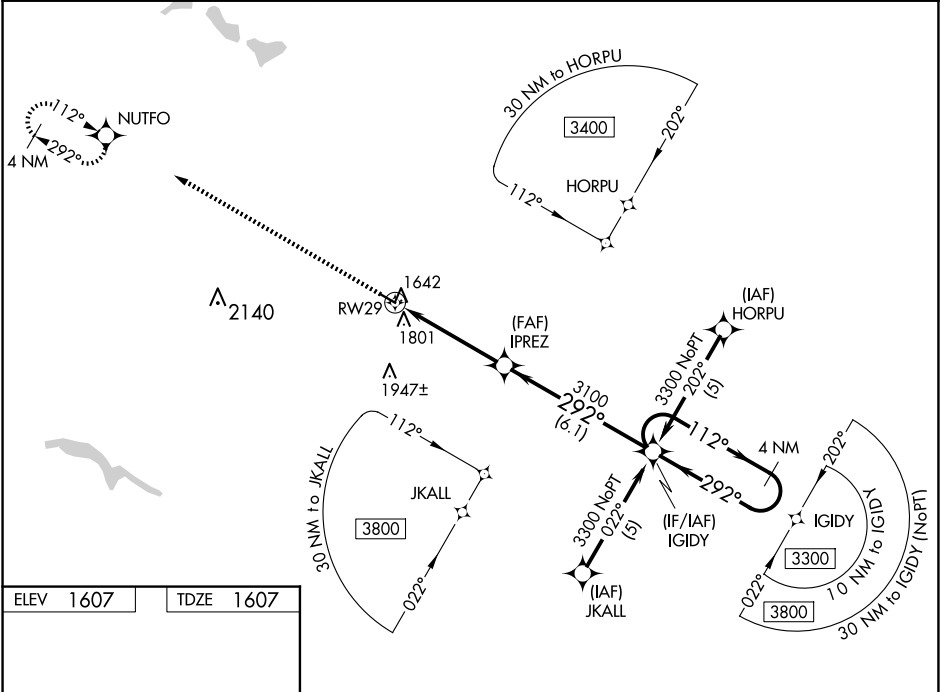
APP CRS	Rwy Idg	<b>3600</b>
<b>292°</b>	TDZE	<b>1607</b>
	Apt Elev	<b>1607</b>

# RNAV (GPS) RWY 29

HARVEY MUNI (5H4)

RNP APCH.	<p><b>▼</b> Circling Rwy 11 NA at night. For uncompensated Baro-VNAV systems, LNAV/VNAV NA below -18°C (0°F) or above 54°C (130°F). Baro-VNAV NA when using Devil's Lake altimeter setting. When local altimeter setting not received, use Devil's Lake altimeter setting; increase LNAV/VNAV DA to 2246 feet and visibility LNAV/VNAV all Cats ½ SM; increase all MDA 140 feet and visibility LNAV and Circling Cat C ½ SM.</p>	<p><b>MISSED APPROACH:</b> Climb to 3400 direct NUTFO and hold.</p>
<b>▲ NA</b>		

AWOS-3 <b>118.825</b>	MINNEAPOLIS CENTER <b>135.25 256.7</b>	UNICOM <b>122.8 (CTAF) ①</b>
--------------------------	---	---------------------------------



CATEGORY	A	B	C	D
LNAV/VNAV DA	2119-1¾ 512 (600-1¾)			NA
LNAV MDA	2100-1	493 (500-1)	2100-1¼ 493 (500-1¼)	NA
CIRCLING	2120-1	513 (600-1)	2300-2 693 (700-2)	NA

NC-1, 20 MAR 2025 to 17 APR 2025

NC-1, 20 MAR 2025 to 17 APR 2025