

NESS CITY, KANSAS

AL-9052 (FAA)

23110

WAAS CH 82244 W35A	APP CRS 352°	Rwy Idg TDZE Apt Elev	4000 2315 2322
--	------------------------	-----------------------------	---

RNAV (GPS) RWY 35

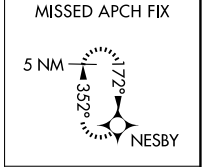
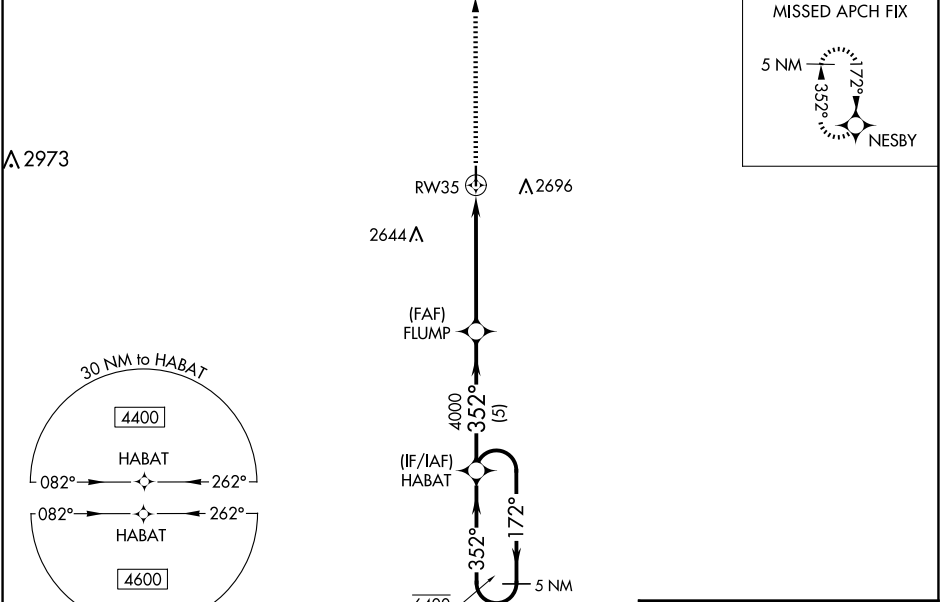
NESS CITY MUNI (48K)

RNP APCH - GPS.

▽ Rwy 35 helicopter visibility reduction below 3/4 SM NA. Baro-VNAV NA.
▲ NA Use Hays Rgnl altimeter setting, when not received, use Hill City altimeter setting and increase LPV DA to 2702 feet, increase LNAV/VNAV DA to 2714 feet, increase all MDAs 20 feet.

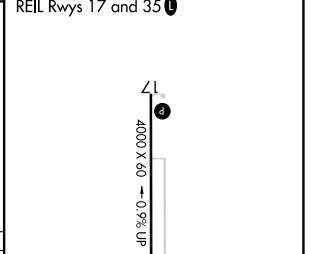
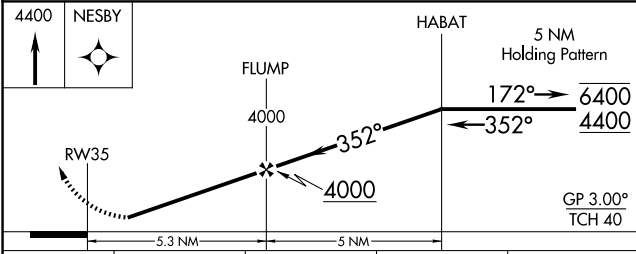
MISSED APPROACH: Climb to 4400 direct NESBY and hold.

HYS AWOS-3PT 125.525	KANSAS CITY CENTER 124.4 322.4	CTAF 122.9
--------------------------------	--	----------------------

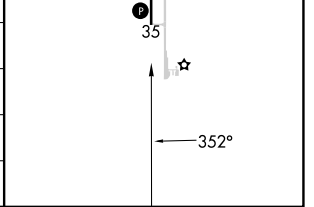


ELEV 2322	D TDZE 2315
-----------	--------------------

MIRL Rwy 17-35
REIL Rwys 17 and 35



CATEGORY	A	B	C	D
LPV DA	2696-1 1/8	381 (400-1 1/8)		NA
LNAV/VNAV DA	2708-1 1/8	393 (400-1 1/8)		NA
LNAV MDA	2860-1	545 (600-1)		NA
CIRCLING	3020-1 698 (700-1)	3140-1 1/4 818 (900-1 1/4)		NA



NESS CITY, KANSAS
Orig 20APR23

38°28'N-99°55'W

RNAV (GPS) RWY 35

NC-2, 20 MAR 2025 to 17 APR 2025

NC-2, 20 MAR 2025 to 17 APR 2025