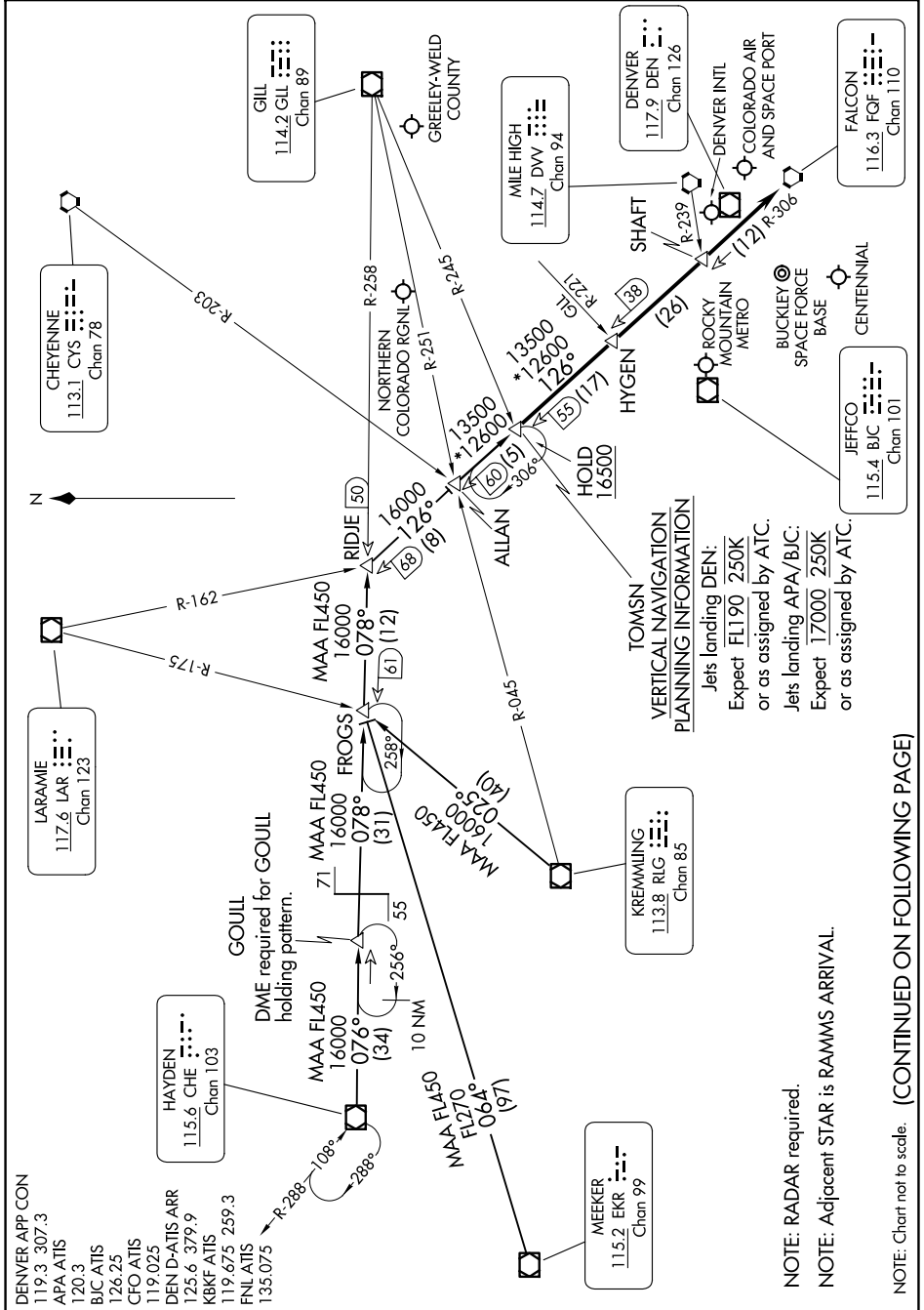


SW-1, 20 MAR 2025 to 17 APR 2025



DENVER APP CON  
 119.3 307.3  
 APA ATIS  
 120.3  
 B/C ATIS  
 126.25  
 CFO ATIS  
 119.025  
 DEN D-ATIS ARR  
 125.6 379.9  
 KBKF ATIS  
 119.675 259.3  
 FNL ATIS  
 135.075

GOUILL  
 DME required for GOUILL  
 holding pattern.

TOMSN  
 VERTICAL NAVIGATION  
 PLANNING INFORMATION  
 Jets landing DEN:  
 Expect FL190 250K  
 or as assigned by ATC.  
 Jets landing APA/B/C:  
 Expect 17000 250K  
 or as assigned by ATC.

NOTE: RADAR required.  
 NOTE: Adjacent STAR is RAMMS ARRIVAL.

NOTE: Chart not to scale. (CONTINUED ON FOLLOWING PAGE)

SW-1, 20 MAR 2025 to 17 APR 2025