

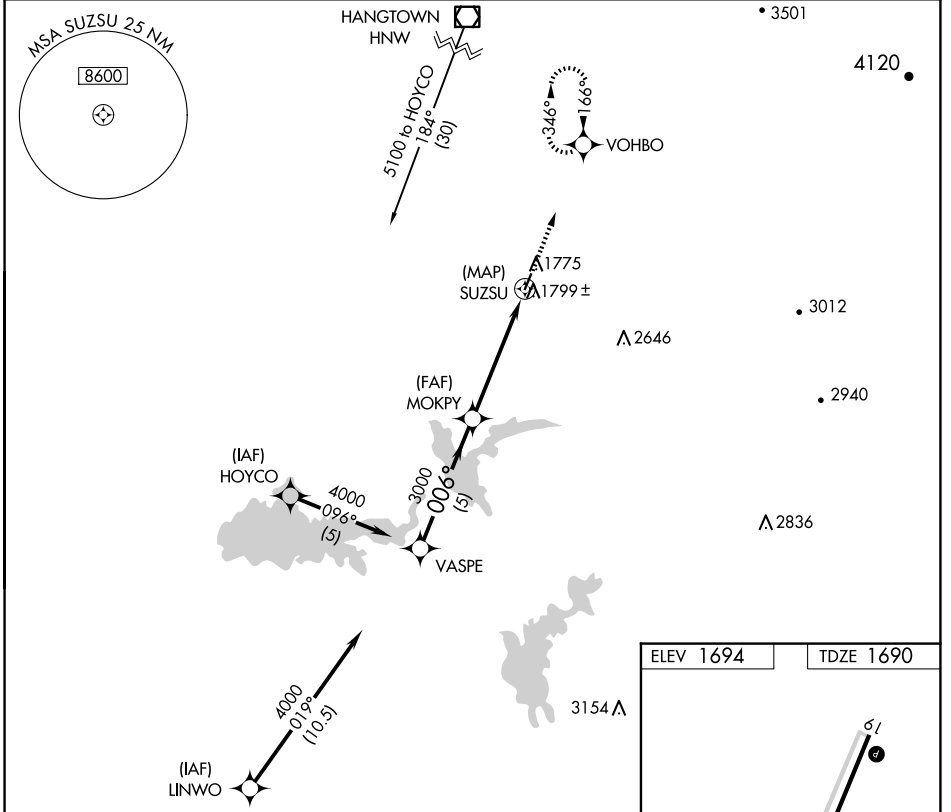
APP CRS	Rwy Idg	3401
006°	TDZE	1690
	Apt Elev	1694

GPS RWY 1

WESTOVER FLD AMADOR COUNTY (JAQ)

<p>▽ When local altimeter setting not received, use Sacramento Exec altimeter setting.</p> <p>△ NA</p>	<p>MISSED APPROACH: Climb to 4500 on 006° course to VOHBO and hold.</p>
--	---

<p>AWOS-3</p> <p>121.125</p>	<p>NORCAL APP CON</p> <p>125.1 363.2</p>	<p>UNICOM</p> <p>123.075 (CTAF) 0</p>
-------------------------------------	---	--



SW-2, 20 MAR 2025 to 17 APR 2025

SW-2, 20 MAR 2025 to 17 APR 2025

<p>Procedure Turn NA</p>	<p>VASPE</p> <p>4000</p> <p>006°</p>		<p>MOKPY</p> <p>3000</p> <p>006°</p>		<p>SUZSU</p> <p>4500</p> <p>006° crs</p>		<p>VOHBO</p>
	<p>5 NM</p>		<p>5 NM</p>				
CATEGORY	A	B	C	D			
S-1	2060-1	370 (400-1)	NA				
SACRAMENTO EXEC ALTIMETER SETTING MINIMUMS							
S-1	2380-1	690 (700-1)	NA				

