

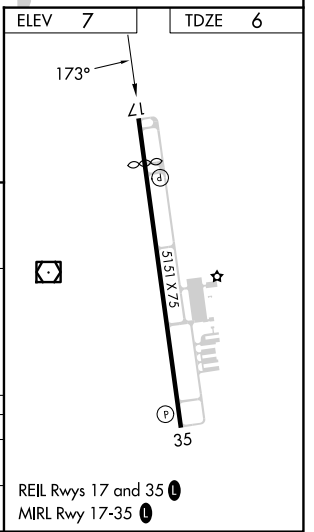
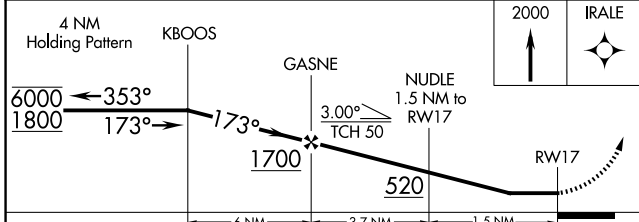
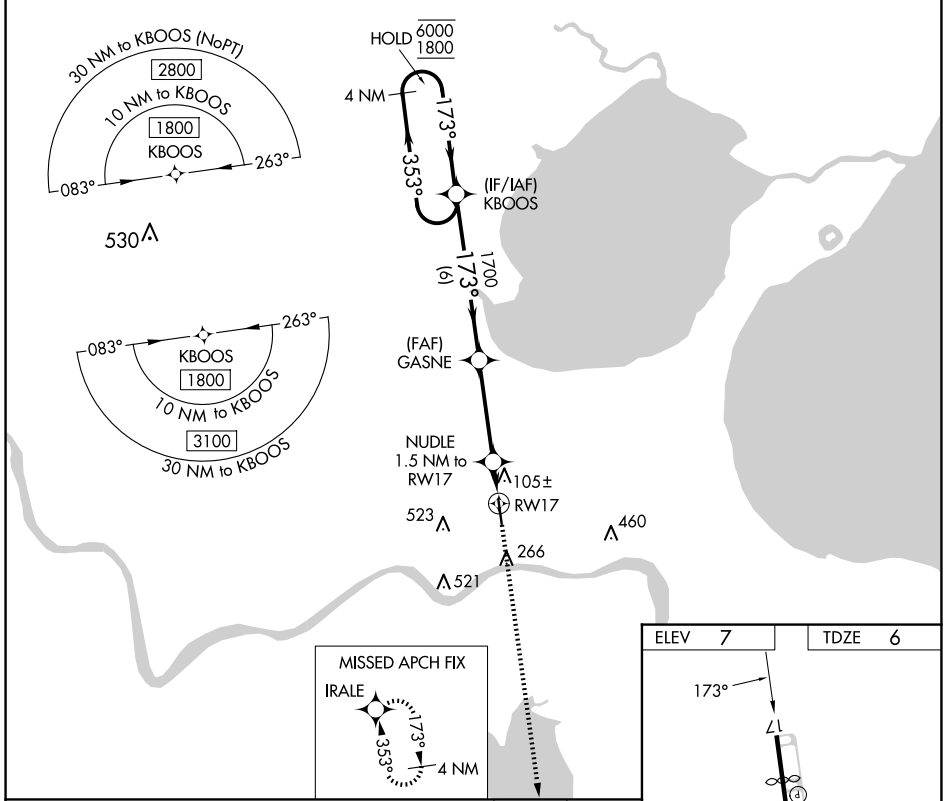
APP CRS	Rwy Idg	4405
173°	TDZE	6
	Apt Elev	7

RNAV (GPS) RWY 17

PORT OF SOUTH LOUISIANA EXEC RGNL (APS)

RNP APCH - GPS.	MISSED APPROACH: Climb to 2000 direct IRALE and hold.
Rwy 17 helicopter visibility reduction below 3/4 SM NA.	

AWOS-3PT 125.45	NEW ORLEANS APP CON 125.5 350.35	UNICOM 122.7 (CTAF) 0
---------------------------	--	---------------------------------



CATEGORY	A	B	C	D
LNAV MDA	400-1	394 (400-1)	400-1 1/8 394 (400-1 1/8)	NA
CIRCLING	700-1	693 (700-1)	840-2 1/2 833 (900-2 1/2)	NA

SC-4, 20 MAR 2025 to 17 APR 2025

SC-4, 20 MAR 2025 to 17 APR 2025