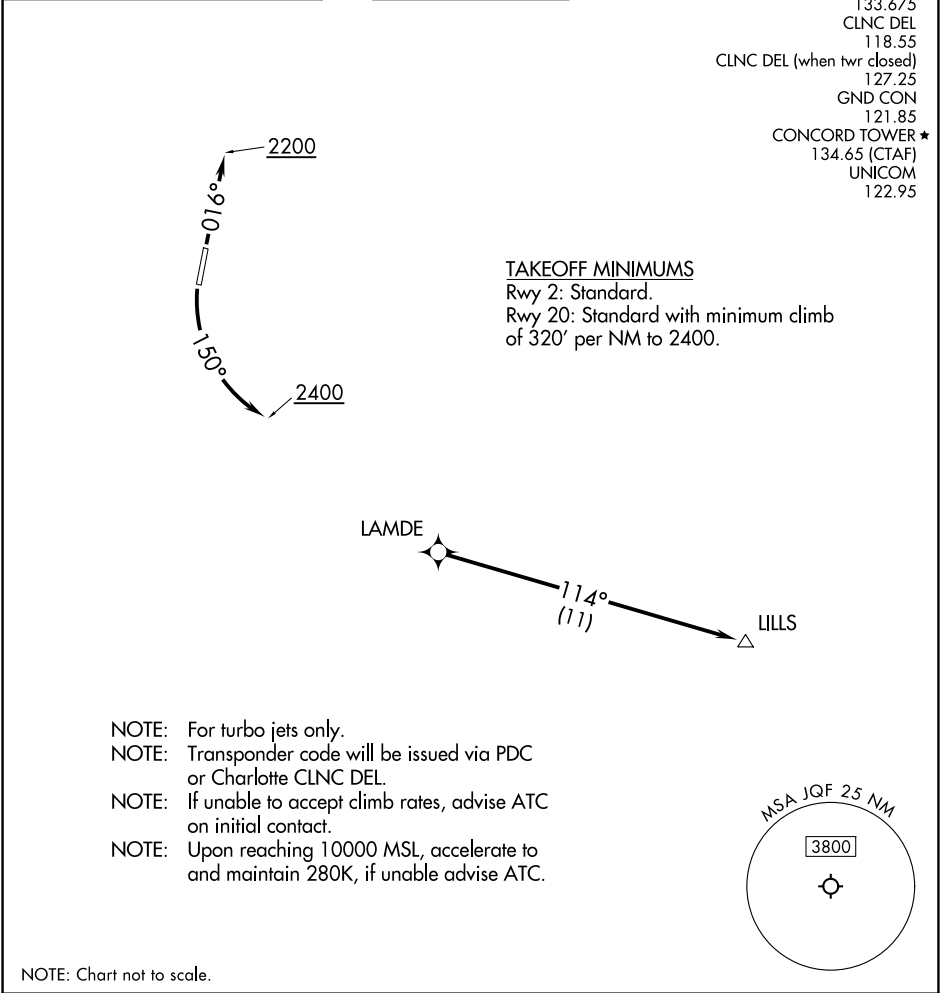


RNAV 1 - DME/DME/IRU or GPS.	<b>TOP ALTITUDE:</b> <b>3000</b>	CHARLOTTE DEP CON 128.325 307.8 ATIS 133.675 CLNC DEL 118.55 CLNC DEL (when twr closed) 127.25 GND CON 121.85 CONCORD TOWER ★ 134.65 (CTAF) UNICOM 122.95
RADAR required.		



<b>DEPARTURE ROUTE DESCRIPTION</b>
<u>TAKEOFF RUNWAY 2:</u> Climb on heading 016° to 2200, then on heading assigned by ATC, thence. . . . <u>TAKEOFF RUNWAY 20:</u> Climbing left turn heading 150° to 2400, then on heading assigned by ATC, thence. . . . ...on RADAR vectors to LAMDE, then on depicted route to LILLS. Maintain 3000. Expect clearance to filed altitude within 10 minutes after departure.

SE-2, 20 MAR 2025 to 17 APR 2025

SE-2, 20 MAR 2025 to 17 APR 2025