

| | | |
|-------------|----------|-------------|
| APP CRS | Rwy Idg | 3703 |
| 003° | TDZE | 82 |
| | Apt Elev | 82 |

RNAV (GPS) RWY 36

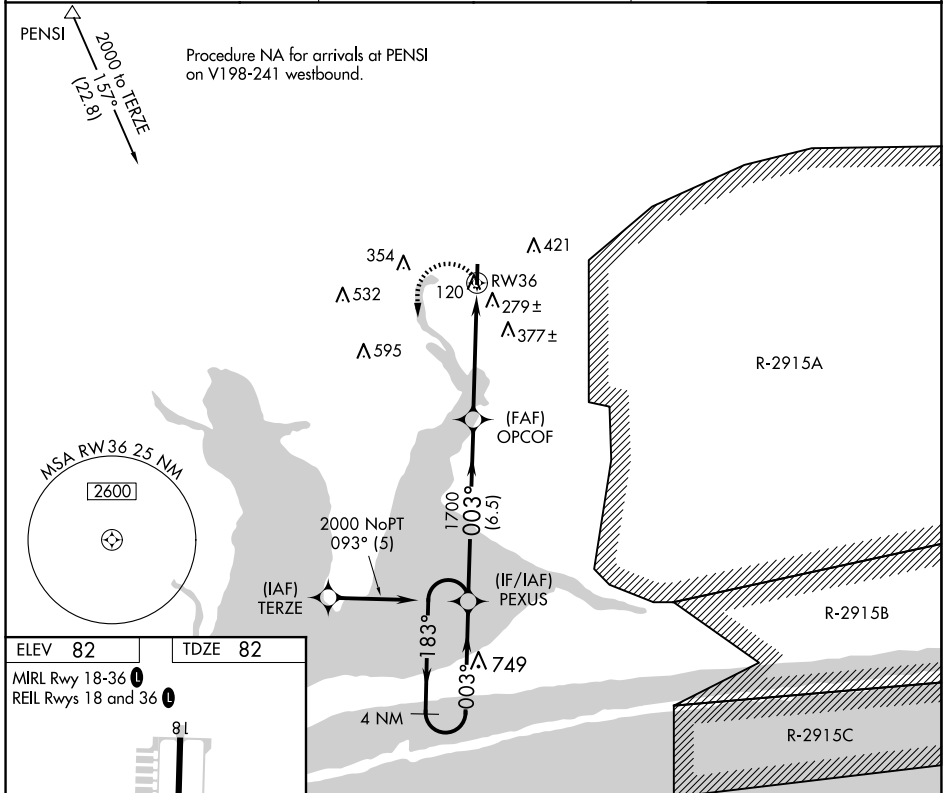
PETER PRINCE FLD (2R4)

RNP APCH.

NA Rwy 36 helicopter visibility reduction below 1 SM NA.
 Use Pensacola Intl altimeter setting; when not received, use Crestview altimeter setting and increase all MDA 40 feet; increase LNAV visibility Cat C 1/8 SM. Procedure NA at night.

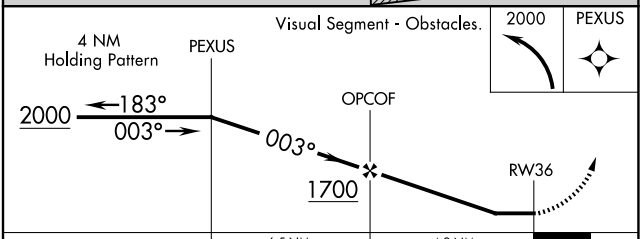
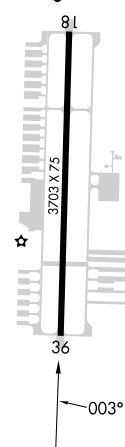
MISSED APPROACH:
 Climbing left turn to 2000 direct PEXUS and hold.

| | | |
|-----------------------|----------------|-----------------------|
| PENSACOLA APP CON | GCO | AUNICOM |
| 124.85 235.775 | 121.725 | 122.975 (CTAF) |



| | |
|---------|---------|
| ELEV 82 | TDZE 82 |
|---------|---------|

MIRL Rwy 18-36
 REIL Rwys 18 and 36



| CATEGORY | A | B | C | D |
|----------|-------|-------------|------------------------------|----|
| LNAV MDA | 580-1 | 498 (500-1) | 580-1 3/8 498 (500-1 3/8) | NA |
| CIRCLING | 700-1 | 618 (700-1) | 760-2 678 (700-2) | NA |

SE-3, 20 MAR 2025 to 17 APR 2025

SE-3, 20 MAR 2025 to 17 APR 2025