

WAAS CH 50346 W35A	APP CRS 345°	Rwy Idg TDZE 63 Apt Elev 63	3601
--	------------------------	---	-------------

RNAV (GPS) RWY 35

AUBURN MUNI (S5 \emptyset)

RNP APCH - GPS.
 ⚠ Circling NA west of Rwy 17-35. Baro-VNAV NA. Rwy 35 helicopter visibility reduction below 1 SM NA. Circling Rwy 17 NA at night. Use Seattle-Tacoma Intl altimeter setting.

MISSED APPROACH: Climb to 700 then climbing right turn to 4400 direct CMNDR and hold, continue climb-in-hold to 4400.

SEA ASOS 118.0	SEATTLE APP CON 123.85	CLNC DEL 123.85	UNICOM 122.975 (CTAF) \emptyset
--------------------------	----------------------------------	---------------------------	---

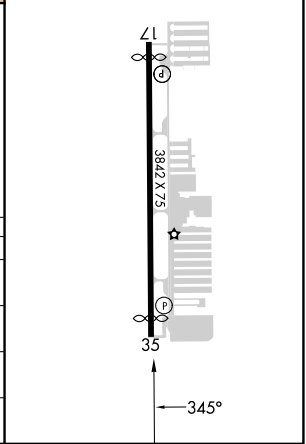
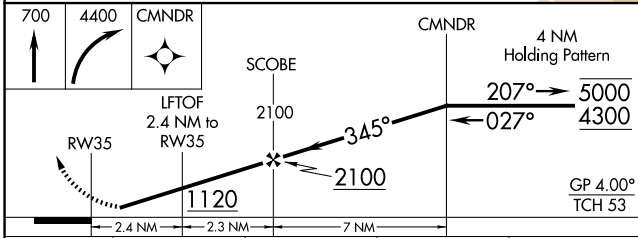


NW-1, 20 MAR 2025 to 17 APR 2025

NW-1, 20 MAR 2025 to 17 APR 2025

(IAF) CIDUG Δ Procedure NA for arrivals at CIDUG on V495 southbound.
 HOLD 5000/4300
 (FAF) SCOBCE
 LFTOF 2.4 NM to RW35
 RW35
 680± Δ , 542 Δ , 708 Δ , 772 Δ , 642, 463±, 633, 723±, 684 Δ , 759, 2075± Δ , 1280, 3570, 3921, 3985, 2000, 4000, 3000, 1523±, 1801, 2058±, 2440, 5941

ELEV 63	TDZE 63
MIRL Rwy 17-35 \emptyset	REIL Rwys 17 and 35 \emptyset



CATEGORY	A	B	C	D
LPV DA	459-1 $\frac{1}{8}$	396 (400-1 $\frac{1}{8}$)		NA
LNAV/VNAV DA	702-1 $\frac{3}{4}$	639 (700-1 $\frac{3}{4}$)		NA
LNAV MDA	740-1	677 (700-1)		NA
CIRCLING	920-1 $\frac{1}{4}$ 857 (900-1 $\frac{1}{4}$)	1040-1 $\frac{1}{2}$ 977 (1000-1 $\frac{1}{2}$)		NA