

| | | |
|--|------------------------|---|
| WAAS CH 58117 W23A | APP CRS 231° | Rwy Idg 5000 TDZE 33 Apt Elev 34 |
|--|------------------------|---|

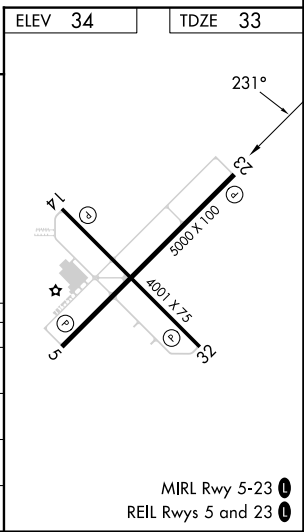
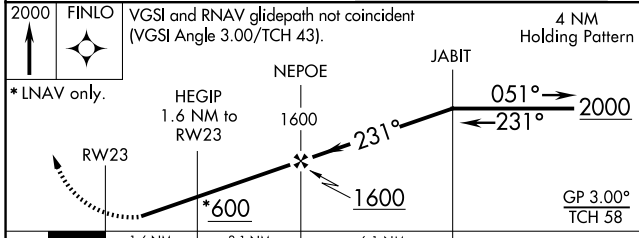
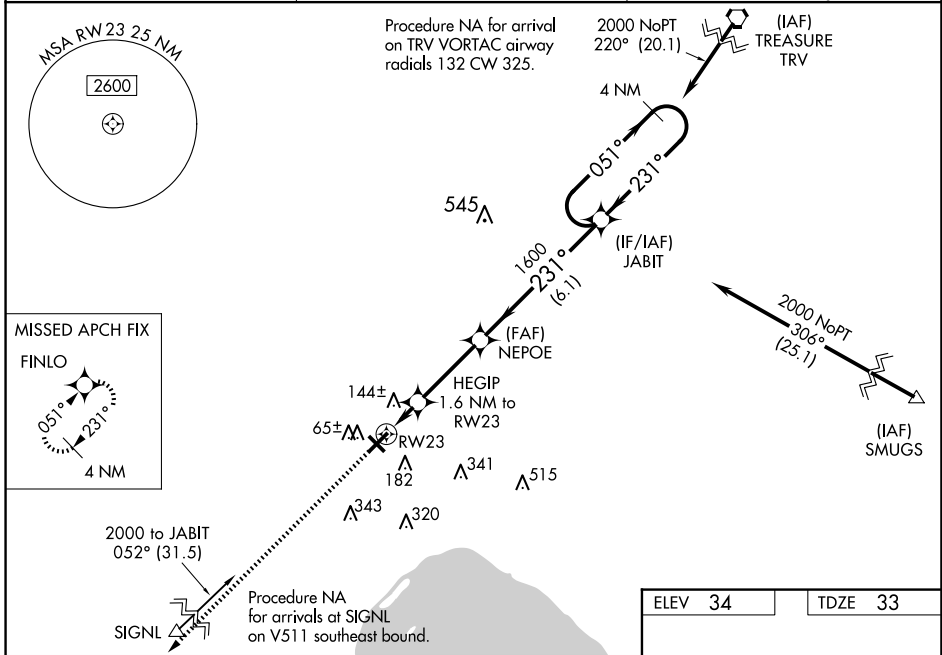
RNAV (GPS) RWY 23

OKEECHOBEE COUNTY (OBE)

⚠ Baro-VNAV NA when using Vero Beach altimeter setting. For uncompensated Baro-VNAV systems, LNAV/VNAV NA below -2°C (29°F) or above 43°C (109°F). DME/DME RNP-0.3 NA. Helicopter visibility reduction below 1 SM NA. When local altimeter setting not received, use Vero Beach altimeter setting: increase LPV DA to 392 feet and increase visibility all Cats ½ SM; increase LNAV/VNAV DA to 512 feet and increase visibility all Cats ¾ SM; increase all MDAs 80 feet and LNAV visibility Cats C and D ¾ SM and Circling visibility Cats C and D ¼ SM. Procedure NA at night.

MISSED APPROACH:
Climb to 2000 direct FINLO and hold.

| | | |
|--------------------------|-------------------------------------|-------------------------------|
| AWOS-3 118.675 | MIAMI CENTER 132.25 370.9 | UNICOM 123.0 (CTAF) |
|--------------------------|-------------------------------------|-------------------------------|



| CATEGORY | A | B | C | D |
|--------------|-------|-------------|------------------------|----------------------|
| LPV DA | | 315-1 | 282 (300-1) | |
| LNAV/VNAV DA | | 435-1¼ | 402 (500-1¼) | |
| LNAV MDA | | 400-1 | 367 (400-1) | |
| CIRCLING | 500-1 | 466 (500-1) | 660-1¾ 626 (700-1¾) | 660-2 626 (700-2) |

SE-3, 20 MAR 2025 to 17 APR 2025

SE-3, 20 MAR 2025 to 17 APR 2025