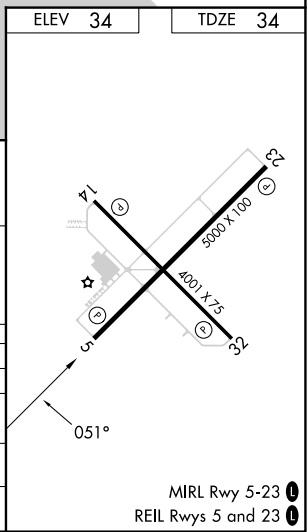
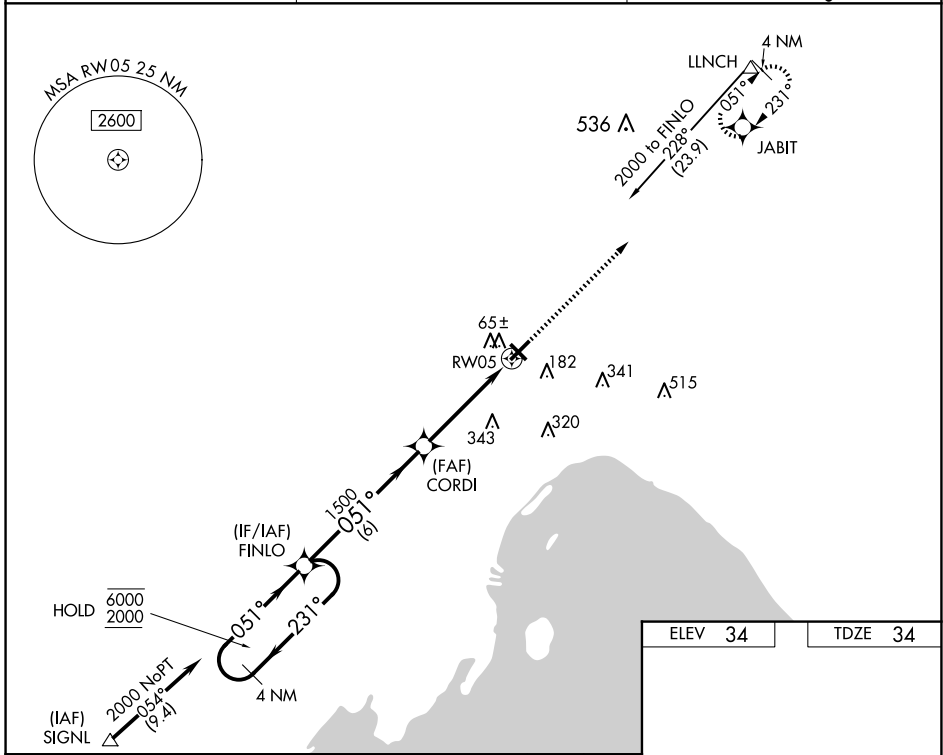


WAAS CH <b>53517</b> <b>W05A</b>	APP CRS <b>051°</b>	Rwy Idg TDZE <b>34</b> Apt Elev <b>34</b>	<b>5000</b>
--	------------------------	---	-------------

# RNAV (GPS) RWY 5

OKEECHOBEE COUNTY (OBE)

RNP APCH - GPS.		MISSED APPROACH: Climb to 2000 direct JABIT and hold.
<p><b>⚠</b> Rwy 5 helicopter visibility reduction below 3/4 SM NA. Circling Rwy 14, 23, 32 NA at night. For uncompensated Baro-VNAV systems, LNAV/VNAV NA below -15°C or above 54°C.</p>		
AWOS-3 <b>118.675</b>	MIAMI CENTER <b>132.25 370.9</b>	UNICOM <b>123.0 (CTAF)</b>



4 NM Holding Pattern	FINLO	CORDI	2000	JABIT
6000 ← 231°	051° →	1500	↑	⬠
GP 3.00°	051°	1500	1.3 NM to RWY 5	
TCH 40	6 NM	3.1 NM	1.3	
CATEGORY	A	B	C	D
LPV DA		284-1	250 (300-1)	
LNAV/VNAV DA		455-1¼	421 (500-1¼)	
LNAV MDA	480-1	446 (500-1)	480-1¾	446 (500-1¾)
CIRCLING	500-1	466 (500-1)	660-1¾ 626 (700-1¾)	660-2 626 (700-2)

SE-3, 20 MAR 2025 to 17 APR 2025

SE-3, 20 MAR 2025 to 17 APR 2025