

WAAS CH 40038 W16A	APP CRS 193°	Rwy Idg TDZE Apt Elev	2901 35 35
--	------------------------	-----------------------------	---------------------------------------

RNAV (GPS) RWY 16

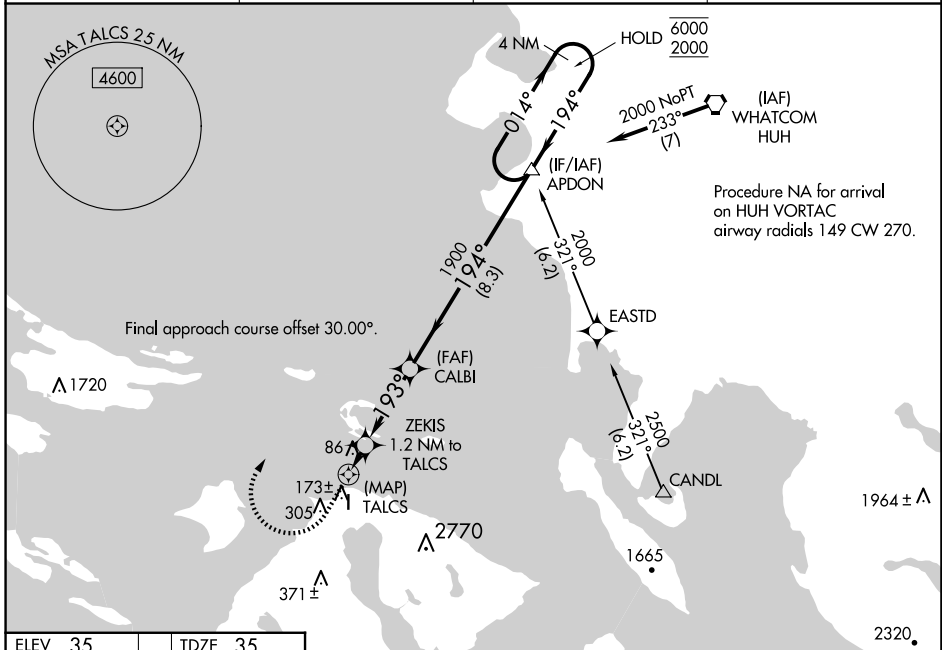
ORCAS ISLAND (ORS)

RNP APCH.

⚠ Circling to Rwy 34 NA at night. Rwy 16 helicopter visibility reduction below 3/4 SM NA. When local altimeter setting not received, use Friday Harbor altimeter setting and increase all MDA 40 feet.

⚠ MISSED APPROACH: Climb to 440 then climbing right turn to 2000 direct APDON and hold.
Missed approach requires minimum climb of 385 feet per NM to 980.

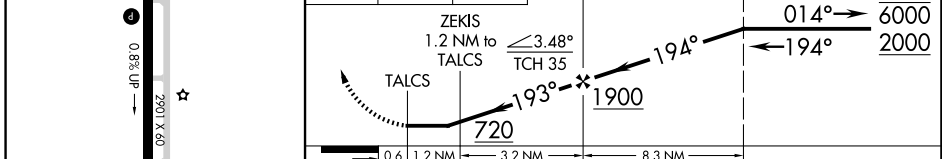
AWOS-3P 135.425	WHIDBEY APP CON 118.2 285.65 (SOUTH)	VICTORIA APP CON 132.7 290.8 (NORTH)	CTAF 128.250
---------------------------	--	--	------------------------



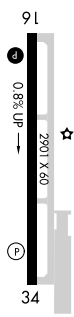
NW-1, 20 MAR 2025 to 17 APR 2025

NW-1, 20 MAR 2025 to 17 APR 2025

ELEV 35	TDZE 35	440	2000	APDON	4 NM Holding Pattern
---------	---------	-----	------	-------	----------------------



CATEGORY	A	B	C	D
LP MDA #	340-1	305 (400-1)		NA
LP MDA	400-1	365 (400-1)		NA
LNAV MDA #	440-1	405 (500-1)		NA
LNAV MDA	700-1	665 (700-1)		NA
C CIRCLING	1120-1¼ 1085 (1100-1¼)	1820-1½ 1785 (1800-1½)		NA



MIRL Rwy 16-34 **Ⓛ**
REIL Rwy 16 and 34 **Ⓛ**