

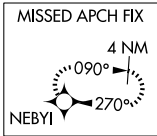
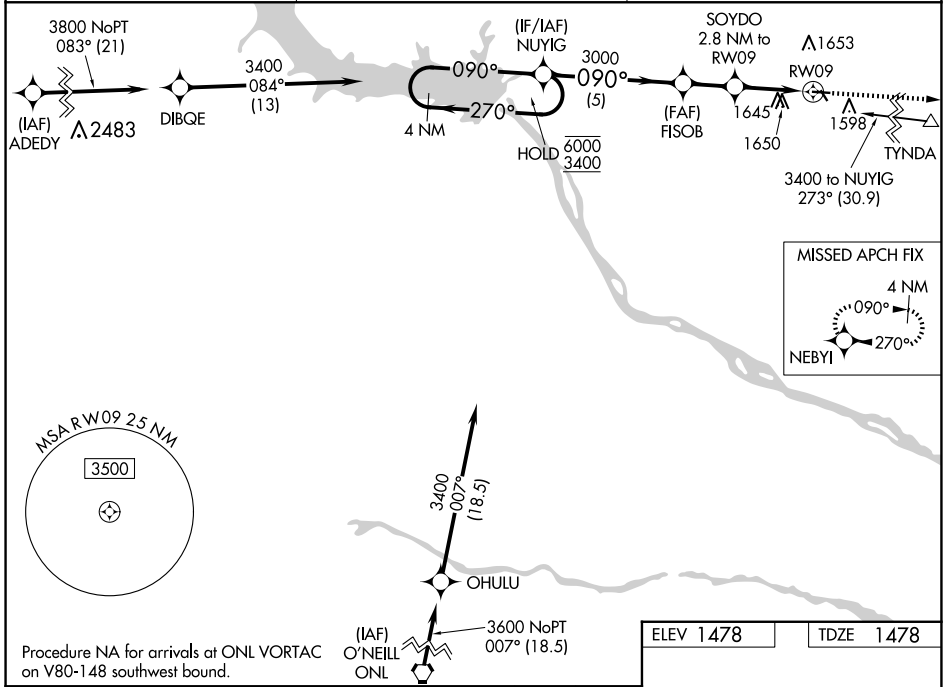
WAAS CH 53334 W09A	APP CRS 090°	Rwy Idg TDZE Apt Elev	3500 1478 1478
--	------------------------	-----------------------------	---

RNAV (GPS) RWY 9

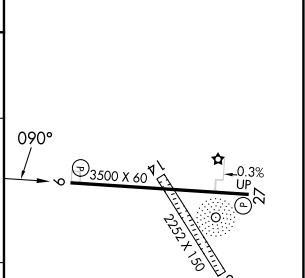
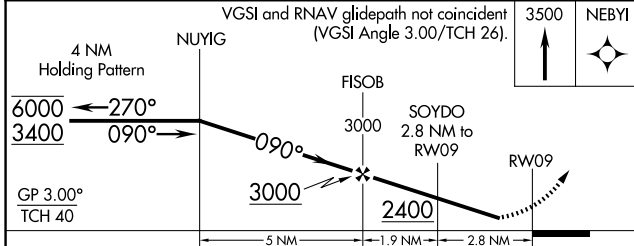
WAGNER MUNI (AGZ)

RNP APCH - GPS.	MISSED APPROACH: Climb to 3500 direct NEBYI and hold.
<p>NA Circling NA to Rws 14 and 32. Baro-VNAV NA. Rwy 9 helicopter visibility reduction below 3/4 SM NA. Use Yankton altimeter setting; when not received use O'Neill altimeter setting and increase all DAs 51 feet, all MDAs 60 feet and increase LPV all Cats visibility 1/8 SM, and LNAV/VNAV all Cats visibility 1/8 SM.</p>	

YKN AWOS-3PT 119.05	MINNEAPOLIS CENTER 128.0 257.95	AUNICOM 122.8 (CTAF) 0
-------------------------------	---	----------------------------------



ELEV 1478	TDZE 1478
-----------	-----------



CATEGORY	A	B	C	D
LPV DA	1847-1	369 (400-1)		NA
LNAV/VNAV DA	2053-1 5/8	575 (600-1 5/8)		NA
LNAV MDA	2020-1	542 (600-1)		NA
C CIRCLING	2080-1	602 (700-1)		NA

MRL Rwy 9-27 0

NC-1, 20 MAR 2025 to 17 APR 2025

NC-1, 20 MAR 2025 to 17 APR 2025