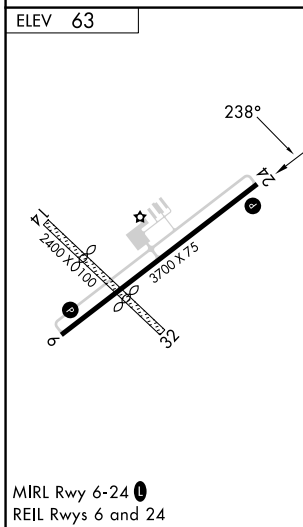
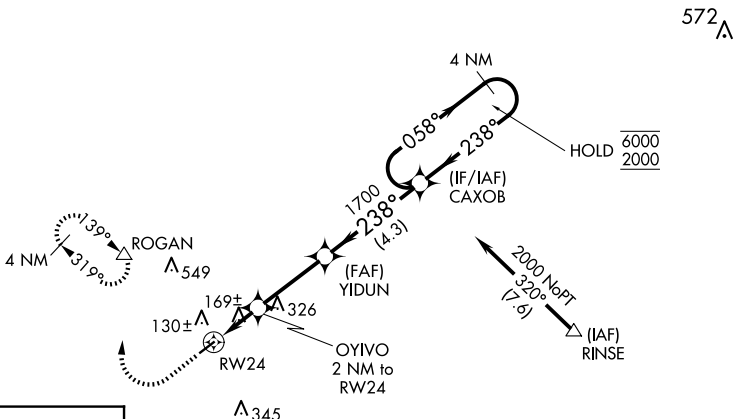
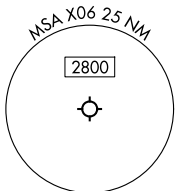


| | | |
|---------|----------|-----|
| APP CRS | Rwy Idg | N/A |
| 238° | TDZE | N/A |
| | Apt Elev | 63 |

RNAV (GPS)-B

ARCADIA MUNI (X06)

| | | |
|--|--------------------------------------|---|
| RNP APCH - GPS. | | <p>MISSED APPROACH: Climb to 1400 then climbing right turn to 2000 direct ROGAN and hold.</p> |
| <p>⚠ Circling NA to Rws 14 and 32. Procedure NA at night. Rwy 24, 06 helicopter visibility reduction below 1 SM NA. Use Punta Gorda altimeter setting; when not received, use Sebring altimeter setting and increase all MDAs 40 feet.</p> | | |
| <p>PGD ASOS 135.675</p> | <p>MIAMI CENTER 134.55 257.7</p> | <p>UNICOM 123.0 (CTAF) 0</p> |



| | | | | | | |
|------------|----------------------|----------------------|-------|---|----------------------|--------|
| ELEV 63 | 1400 | 2000 | ROGAN | VGSI and descent angle not coincident (VGSI Angle 3.00/TCH 50). | 4 NM Holding Pattern | |
| | ↑ | ↷ | △ | | | |
| | | | | YIDUN | CAXOB | |
| | | | | 058° → 6000 | ← 238° 2000 | |
| | | | | 1700 | | |
| | | | | ≤ 3.00° TCH 40 | | |
| | | | | 740 | | |
| | | | | 2 NM | 3 NM | 4.3 NM |
| CATEGORY | A | B | C | D | | |
| ☑ CIRCLING | 560-1 497 (500-1) | 700-1 637 (700-1) | NA | | | |

SE-3, 20 MAR 2025 to 17 APR 2025

SE-3, 20 MAR 2025 to 17 APR 2025