

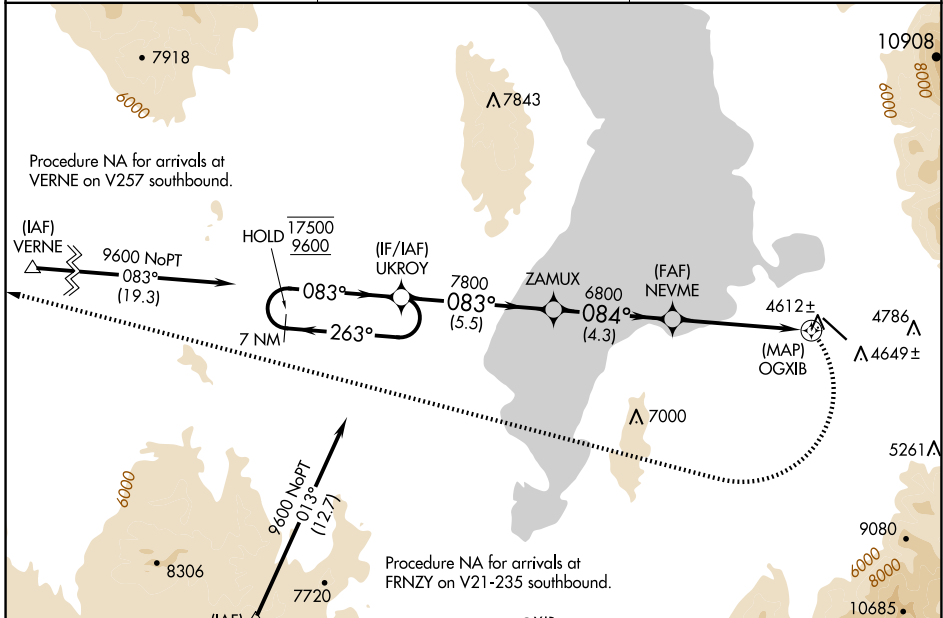
APP CRS 084°	Rwy Idg TDZE Apt Elev 4530	N/A N/A 4530
------------------------	--	---------------------------

RNAV (GPS)-A

SPANISH FORK MUNI/WOODHOUSE FLD (SPK)

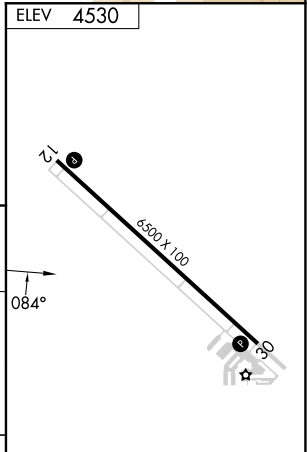
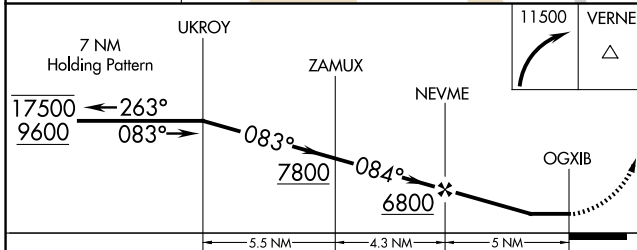
RNP APCH-GPS.	MISSED APPROACH: (Do not exceed 185K until turn completion) Climbing right turn to 11500 direct VERNE and hold.
<p>When local altimeter setting not received, use Provo altimeter setting and increase all MDAs 20 feet.</p> <p>NA -21°C</p>	

AWOS-3PT 119.275	SALT LAKE CITY APP CON 118.85 233.7	CTAF 122.9
----------------------------	---	----------------------



SW-4, 20 MAR 2025 to 17 APR 2025

SW-4, 20 MAR 2025 to 17 APR 2025



CATEGORY	A	B	C	D
CIRCLING	6200-1¼ 1670 (1700-1¼)	6200-1½ 1670 (1700-1½)	6200-3	1670 (1700-3)

MIRL Rwy 12-30

REIL Rwy 12 and 30