

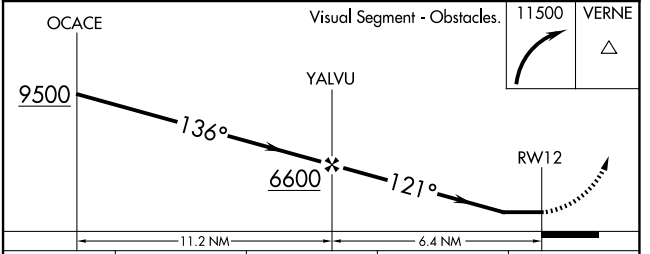
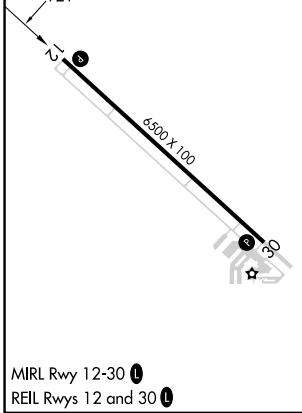
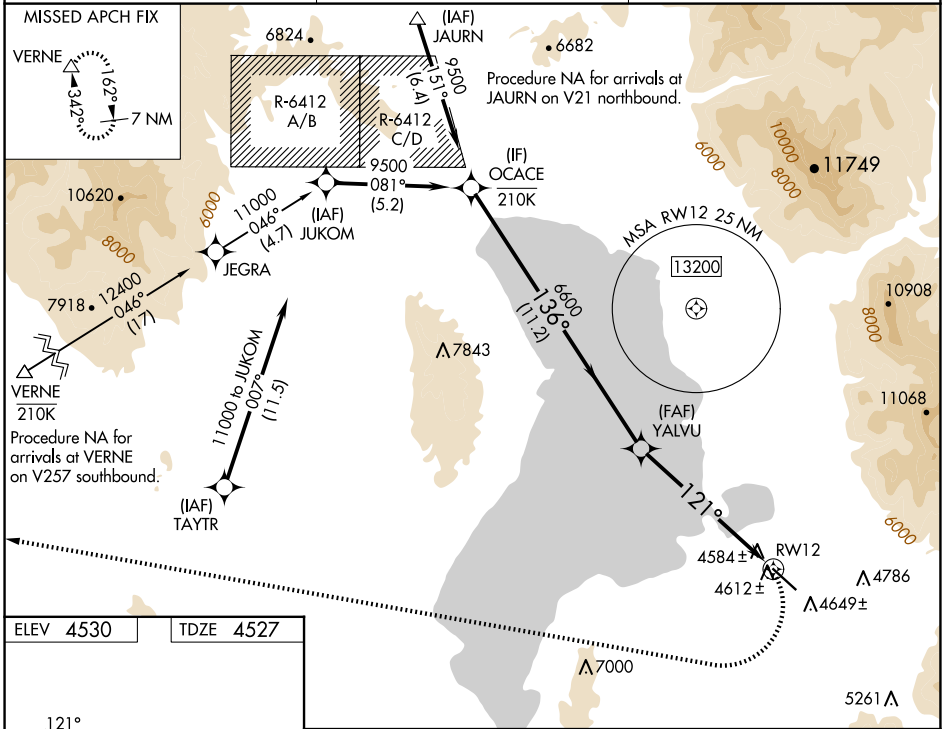
WAAS CH 78042 W12A	APP CRS 121°	Rwy Idg TDZE Apt Elev	6500 4527 4530
--	------------------------	-----------------------------	---

RNAV (GPS) Y RWY 12

SPANISH FORK MUNI/WOODHOUSE FLD (SPK)

RNP APCH - GPS.	<p>▽ Rwy 12 helicopter visibility reduction below 3/4 SM NA. When local altimeter setting not received, use PVU altimeter setting and increase all MDAs 20 feet. Circling NA for Cat D northeast of Rwy 12-30.</p> <p>▲ NA</p> <p>❄ -21°C</p>	<p>MISSED APPROACH: (Do not exceed 185K until turn completion) Climbing right turn to 11500 direct VERNE and hold.</p>
-----------------	--	--

AWOS-3PT 119.275	SALT LAKE CITY APP CON 118.85 233.7	CTAF 122.9
----------------------------	---	----------------------



CATEGORY	A	B	C	D
LP MDA	6040-1¼ 1513 (1600-1¼)	6040-1½ 1513 (1600-1½)	6040-3	1513 (1600-3)
LNAV MDA	6160-1¼ 1633 (1700-1¼)	6160-1½ 1633 (1700-1½)	6160-3	1633 (1700-3)
☑ CIRCLING	6160-1¼ 1630 (1700-1¼)	6160-1½ 1630 (1700-1½)	6160-3	1630 (1700-3)

SW-4, 20 MAR 2025 to 17 APR 2025

SW-4, 20 MAR 2025 to 17 APR 2025