

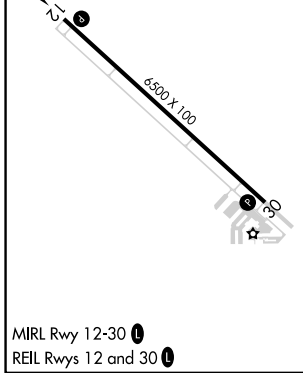
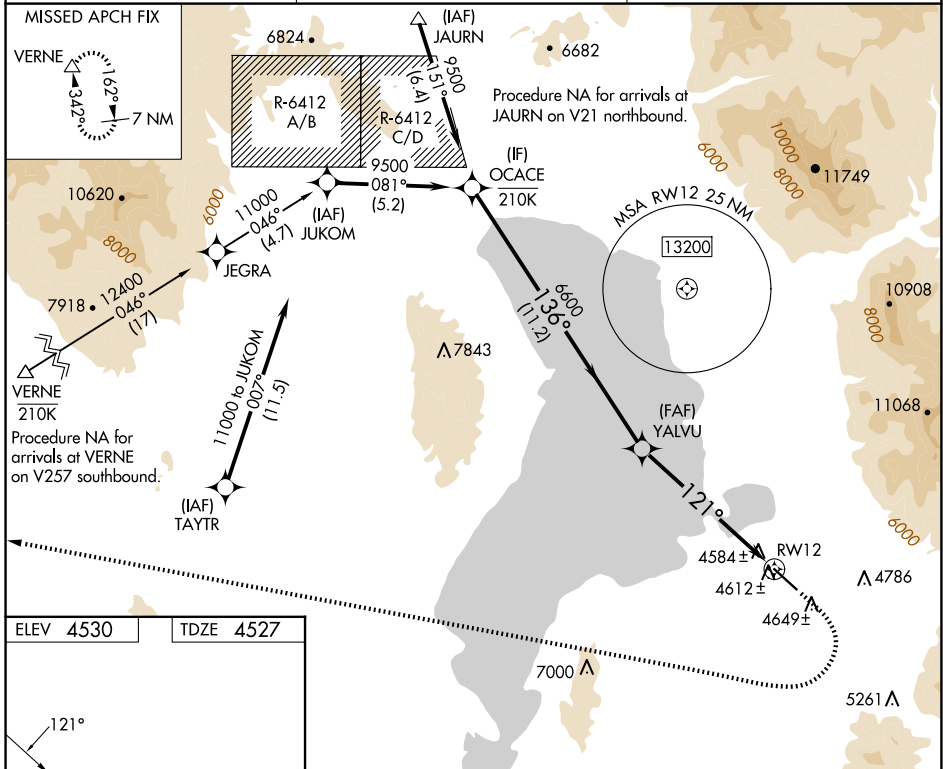
WAAS CH 82342 W12B	APP CRS 121°	Rwy Idg TDZE Apt Elev	6500 4527 4530
--	------------------------	-----------------------------	---

RNAV (GPS) Z RWY 12

SPANISH FORK MUNI/WOODHOUSE FLD (SPK)

RNP APCH - GPS.	<p>▽ Rwy 12 helicopter visibility reduction below 3/4 SM NA. When local altimeter setting not received, use PVU altimeter setting and increase all MDAs 20 feet.</p> <p>⚠ NA</p> <p>⊗ -21°C</p>	<p>MISSED APPROACH: (Do not exceed 185K until VERNE) Climb to 5000 then climbing right turn to 11500 direct VERNE and hold.</p> <p>*Missed approach requires minimum climb of 380 feet per NM to 7600; if unable to meet climb gradient, see RNAV (GPS) Y RWY 12.</p>
-----------------	--	--

AWOS-3PT 119.275	SALT LAKE CITY APP CON 118.85 233.7	CTAF 122.9
----------------------------	---	----------------------



OCACE	Visual Segment - Obstacles.			5000	11500	VERNE
9500	YALVU			↑	↷	△
	136°	6600	121°			
	11.2 NM	6.4 NM				
CATEGORY	A	B	C	D		
LP MDA*	4980-1	453 (500-1)	4980-1 3/8	453 (500-1 3/8)		
LNAV MDA*	4980-1	453 (500-1)	4980-1 3/8	453 (500-1 3/8)		

SW-4, 20 MAR 2025 to 17 APR 2025

SW-4, 20 MAR 2025 to 17 APR 2025