

# COPTER TACAN RWY 22

TACAN NGF Chan <b>93</b>	APCH CRS <b>192°</b>	Rwy Idg TDZE <b>7771</b> Arprt Elev <b>23</b>
--------------------------	----------------------	--------------------------------------------------

[USN]

KANEOHE BAY MCAS (PHNG)

RADAR required

▼ \* Circling not authorized SE of Rwy 04-22.  
 Visibility reduction not authorized.

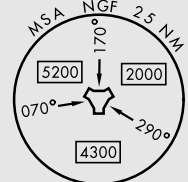
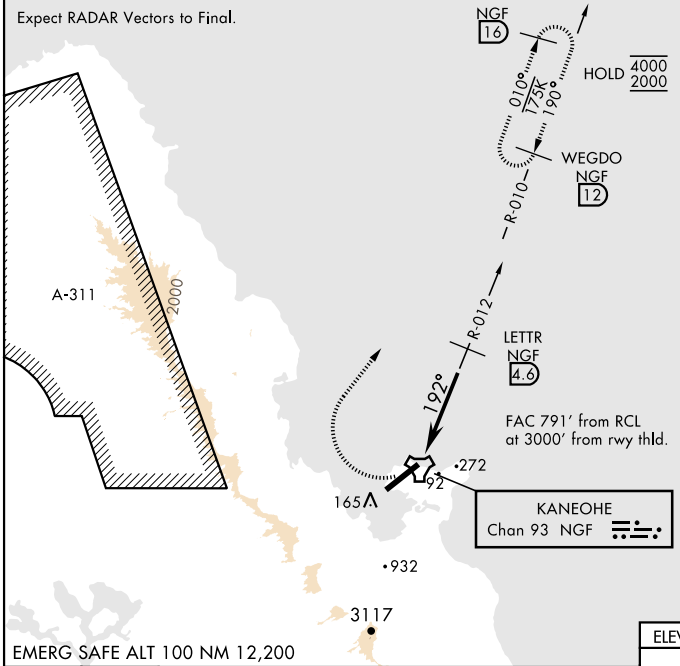
MISSED APPROACH: Climbing right turn to 2000, intercept NGF TACAN R-010 and proceed direct WEGDO and hold.

ATIS <b>284.5</b>	APP/DEP CON <b>125.0 263.5</b>	TOWER <b>120.7(CTAF) 360.2</b>	GND CON <b>382.8</b>	CLNC DEL <b>294.7</b>	ASR/PAR
-------------------	--------------------------------	--------------------------------	----------------------	-----------------------	---------

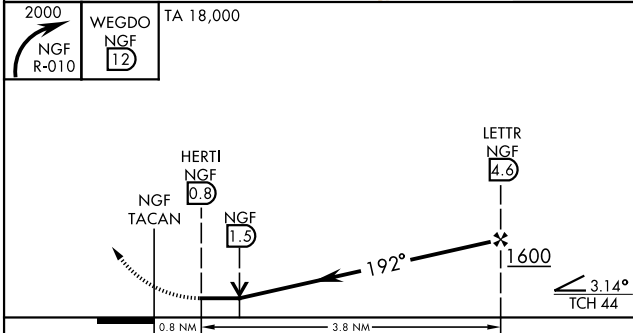
CAUTION: Mountainous terrain E, S, and W of airfield.

Max procedure airspeed 90 KIAS.

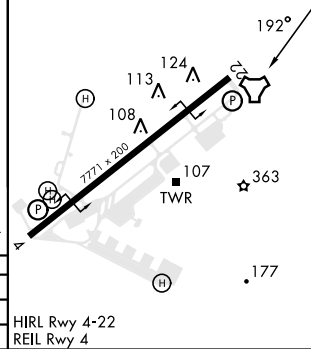
Expect RADAR Vectors to Final.



EMERG SAFE ALT 100 NM 12,200



ELEV	23	TDZE	23
------	----	------	----



CATEGORY	COPTER		
H-22	540-1	517	(600-1)
<b>CIRCLING*</b>	540-1	517	(600-1)

HIRL Rwy 4-22  
REIL Rwy 4

# COPTER TACAN RWY 22

PAC, 20 FEB 2025 to 17 APR 2025

PAC, 20 FEB 2025 to 17 APR 2025