

# HI-TACAN Y RWY 22

TACAN NGF Chan <b>93</b>	APCH CRS <b>206°</b>	Rwy ldg TDZE <b>23</b> Arprt Elev <b>23</b>
--------------------------	----------------------	--

[USN]

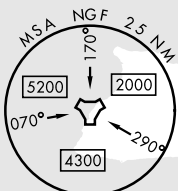
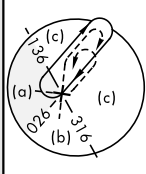
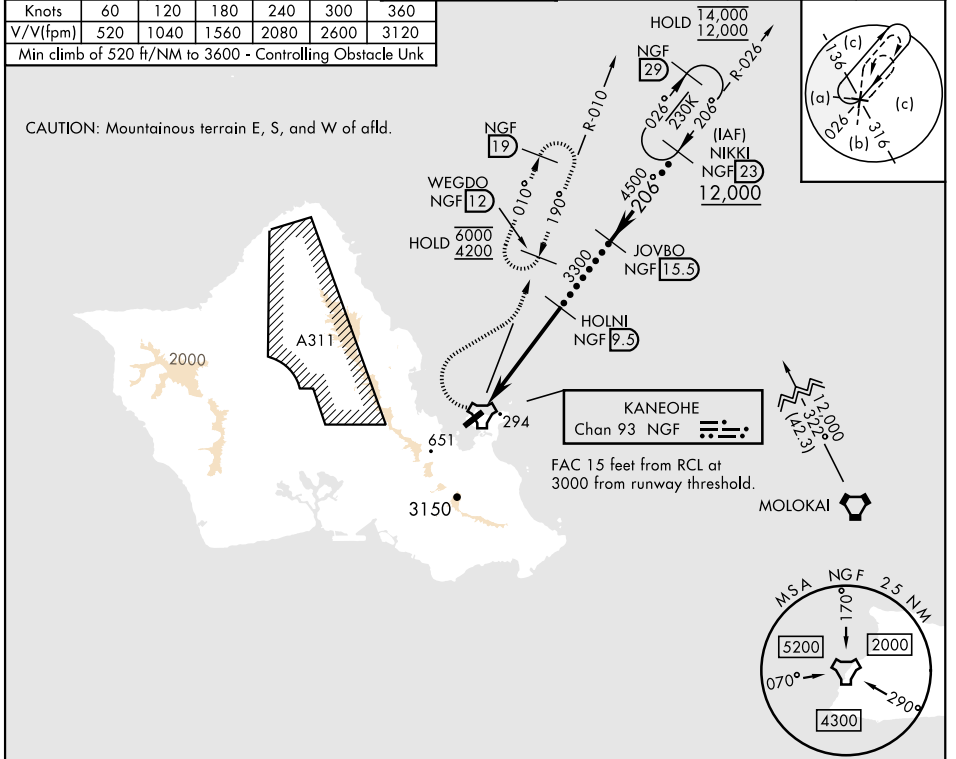
KANEHOE BAY MCAS (PHNG)

▼ \*Circling not authorized SE of Rwy 4-22, CAT D remain within 2.8 NM.  
 MISSED APPROACH: Climbing right turn to 4200, intercept NGF TACAN R-010 and proceed direct WEGDO and hold.

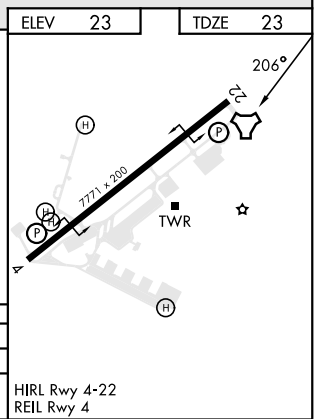
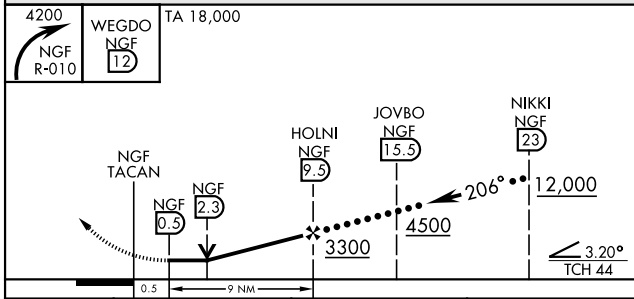
ATIS <b>284.5</b>	APP/DEP CON <b>125.0 263.5</b>	TOWER <b>120.7(CTAF) 360.2</b>	GND CON <b>382.8</b>	CLNC DEL <b>294.7</b>	ASR/PAR
-------------------	--------------------------------	--------------------------------	----------------------	-----------------------	---------

Knots	60	120	180	240	300	360
V/V(fpm)	520	1040	1560	2080	2600	3120
Min climb of 520 ft/NM to 3600 - Controlling Obstacle Unk						

CAUTION: Mountainous terrain E, S, and W of afld.



EMERG SAFE ALT 100 NM 12,200



CATEGORY	C	D	E
S-22	820-2½	797 (800-2½)	
CIRCLING*	960-2¾ 937 (1000-2¾)	960-3 937 (1000-3)	3280-3 3257 (3300-3)

HIRL Rwy 4-22  
REIL Rwy 4

# HI-TACAN Y RWY 22

PAC. 20 FEB 2025 to 17 APR 2025

PAC. 20 FEB 2025 to 17 APR 2025