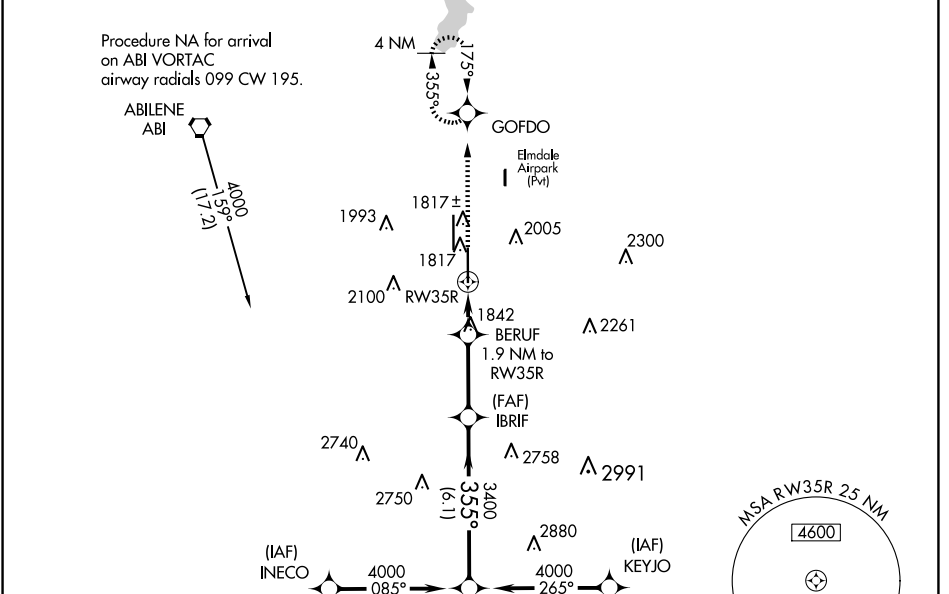


WAAS CH 97517 W35A	APP CRS 355°	Rwy Idg TDZE Apt Elev	7198 1776 1791
--	------------------------	-----------------------------	---

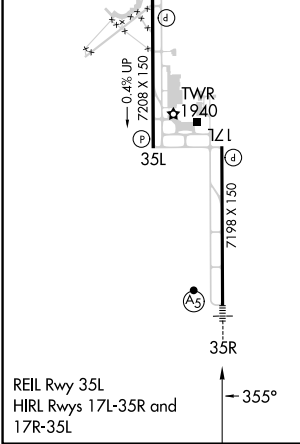
RNAV (GPS) RWY 35R

ABILENE RGNL (ABI)

RNP APCH.		MALSR	MISSED APPROACH: Climb to 4000 direct GOFDO and hold, continue climb-in-hold to 4000.
ATIS 118.25	ABILENE APP CON 125.0 338.3 (EAST) 127.2 282.3 (WEST)	ABILENE TOWER 120.1 257.8	GND CON 121.7 348.6



ELEV 1791	D	TDZE 1776
-----------	----------	-----------



4000	GOFDO	IBRIF	NILSE		
*LNAV only.	BERUF 1.9 NM to RWY 35R	3400	4000		
*1.3 NM to RWY 35R	*2440	3400	GP 3.00° TCH 58		
-1.3 NM	0.6	3 NM	6.1 NM		
CATEGORY	A	B	C	D	E
LPV DA**	1976/24 200 (200-½)				
LNAV/VNAV DA	2189/40 413 (400-¾)			2189/50 413 (400-1)	
LNAV MDA	2260/24 484 (500-½)		2260/50 484 (500-1)		
C CIRCLING	2300-1 509 (600-1)	2320-1 529 (600-1)	2420-1¾ 629 (700-1¾)	2460-2 669 (700-2)	2620-3 829 (900-3)

SC-2, 17 APR 2025 to 15 MAY 2025

SC-2, 17 APR 2025 to 15 MAY 2025