

VOR ABI <b>113.7</b> Chan <b>84</b>	APP CRS <b>105°</b>	Rwy Idg TDZE Apt Elev <b>N/A</b> <b>N/A</b> <b>1791</b>
---	------------------------	--

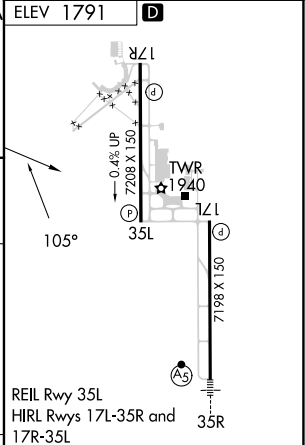
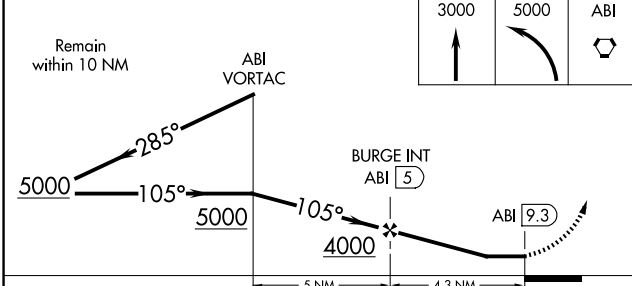
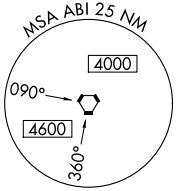
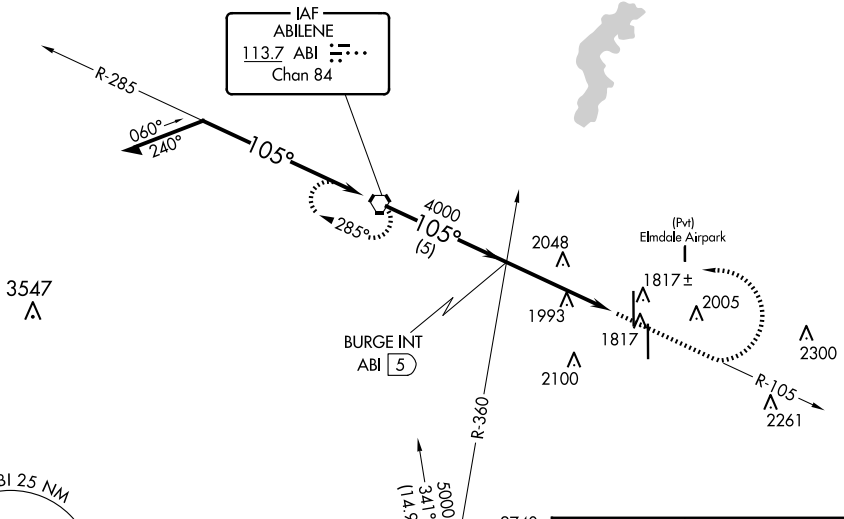
# VOR or GPS-A

ABILENE RGNL (ABI)

**▽** MISSED APPROACH: Climb to 3000, then dimbing left turn to 5000 direct ABI VORTAC and hold.

ATIS <b>118.25</b>	ABILENE APP CON <b>125.0 338.3</b> (EAST) <b>127.2 282.3</b> (WEST)	ABILENE TOWER <b>120.1 257.8</b>	GND CON <b>121.7 348.6</b>
-----------------------	---	-------------------------------------	-------------------------------

NoPT for arrivals on ABI VORTAC  
airway radials 195 CW 318.



CATEGORY	A	B	C	D	FAF to MAP 4.3 NM					
CIRCLING	2300-1 509 (600-1)	2320-1 529 (600-1)	2420-1¾ 629 (700-1¾)	2460-2 669 (700-2)	Knots	60	90	120	150	180
					Min:Sec	4:18	2:52	2:09	1:43	1:26

SC-2, 17 APR 2025 to 15 MAY 2025

SC-2, 17 APR 2025 to 15 MAY 2025