

CLOUD-FOUR BRAVO (RNAV) DEPARTURE (CLOUB4•CLOUD)

ALAMOGORDO, NEW MEXICO

ATIS ★ 273.5
CLNC DEL
126.7 289.4
GND CON
127.05 275.8
TOWER ★
119.3 254.4
DEP CON
128.1 284.0
ALBUQUERQUE CENTER
132.65 257.6

AL-7 [USAF]

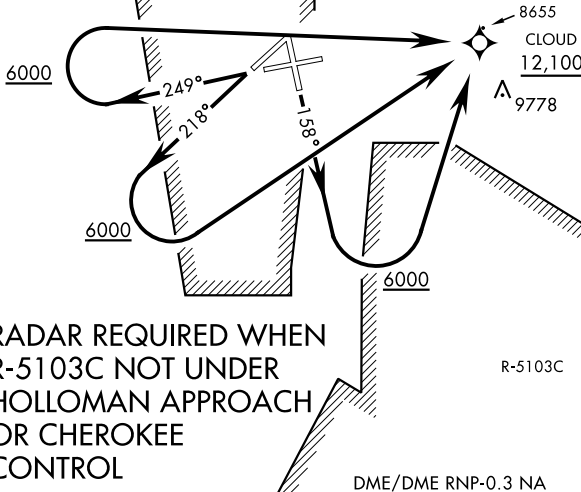
Rwy	Knots	60	120	180	240	300	360
16	V/V(fpm)	490	980	1470	1960	2450	2940
22/25	V/V(fpm)	500	1000	1500	2000	2500	3000

Minimum climb to 12,100

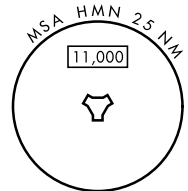
BEAK B MOA

BEAK C MOA

SW-1, 17 APR 2025 to 15 MAY 2025



**RADAR REQUIRED WHEN
R-5103C NOT UNDER
HOLLOMAN APPROACH
OR CHEROKEE
CONTROL**



SW-1, 17 APR 2025 to 15 MAY 2025



DEPARTURE ROUTE DESCRIPTION

TAKEOFF RWY 16: Climb on track 158°. When leaving 6000 turn left direct CLOUD then via assigned routing. Cross CLOUD at or above 12,100.

TAKEOFF RWY 22: Climb on track 218°. When leaving 6000 turn left direct CLOUD then via assigned routing. Cross CLOUD at or above 12,100.

TAKEOFF RWY 25: Climb on track 249°. When leaving 6000 turn right direct CLOUD then via assigned routing. Cross CLOUD at or above 12,100.