

HI-ILS or LOC RWY 22

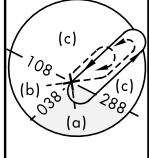
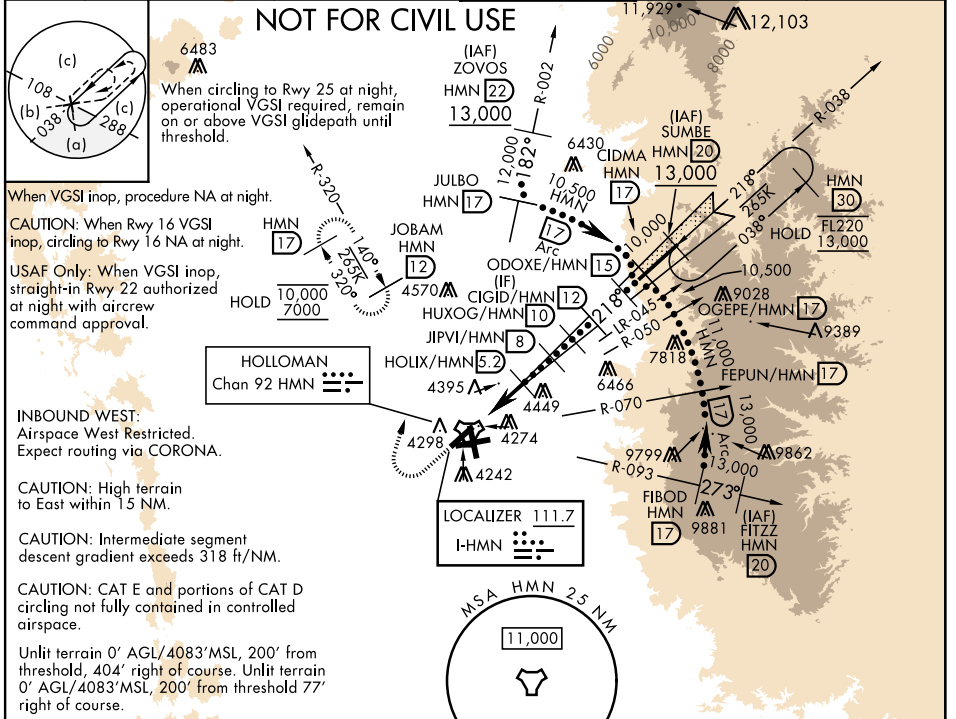
LOC I-HMN 111.7	APCH CRS 218°	Rwy Idg 10,578
		TDZE 4083
		Arpt Elev 4093

[USAF]

HOLLOMAN AFB (KHMM)

RADAR or DME required.		ALSIF-1 	MISSED APPROACH: Climb straight ahead to 7000, passing 5000 turn right and intercept HMN R-320 outbound to JOBAM and hold.	
*When ALS inop, increase vis to 3/4 miles. **When ALS inop, increase vis to 1 1/4 miles.				

ATIS ★ 273.5	ALBUQUERQUE CENTER 132.65 257.6	APP CON 120.6 269.225	TOWER ★ 119.3 254.4	GND CON 127.05 275.8	CLNC DEL 126.7 289.4
------------------------	-------------------------------------------	---------------------------------	-------------------------------	--------------------------------	--------------------------------



NOT FOR CIVIL USE

6483

When circling to Rwy 25 at night, operational VGSi required, remain on or above VGSi glidepath until threshold.

When VGSi inop, procedure NA at night.

CAUTION: When Rwy 16 VGSi inop, circling to Rwy 16 NA at night.

USAF Only: When VGSi inop, straight-in Rwy 22 authorized at night with aircrew command approval.

INBOUND WEST:
Airspace West Restricted.
Expect routing via CORONA.

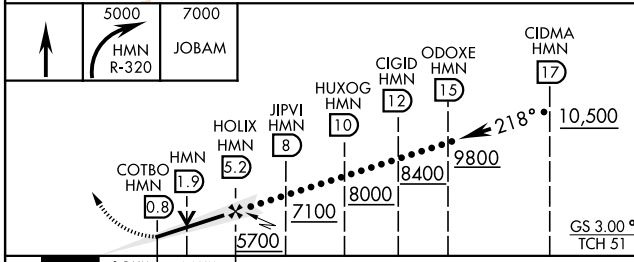
CAUTION: High terrain to East within 15 NM.

CAUTION: Intermediate segment descent gradient exceeds 318 ft/NM.

CAUTION: CAT E and portions of CAT D circling not fully contained in controlled airspace.

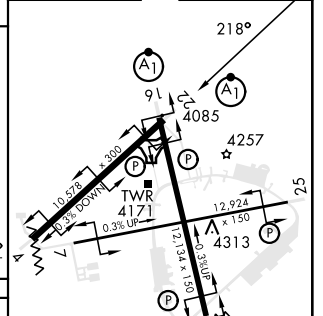
Unlit terrain 0' AGL/4083' MSL, 200' from threshold, 404' right of course. Unlit terrain 0' AGL/4083' MSL, 200' from threshold 77' right of course.

EMERG SAFE ALT 100 NM 14,200



CATEGORY	C	D	E
S-ILS 22 *	4283-1/2	200 (200-1/2)	
S-LOC 22 **	4680-1 1/4	597 (600-114)	
CIRCLING	4680-1 3/4 587 (600-134)	5200-3 1107 (1200-3)	5300-3 1207 (1300-3)

ELEV	4093	TDZE	4083
------	------	------	------



HIRL all rwys REIL Rwy 22	FAF to MAP 4.4 NM					
	Knots	120	140	160	180	200
	Min:Sec	2:12	1:53	1:39	1:28	1:19

HI-ILS or LOC RWY 22

SW-1, 17 APR 2025 to 15 MAY 2025

SW-1, 17 APR 2025 to 15 MAY 2025