

IZZYY ONE DEPARTURE (RNAV) (IZZYY1•IZZYY)

HOLLOMAN AFB (KHMN)

ALAMOGORDO, NEW MEXICO

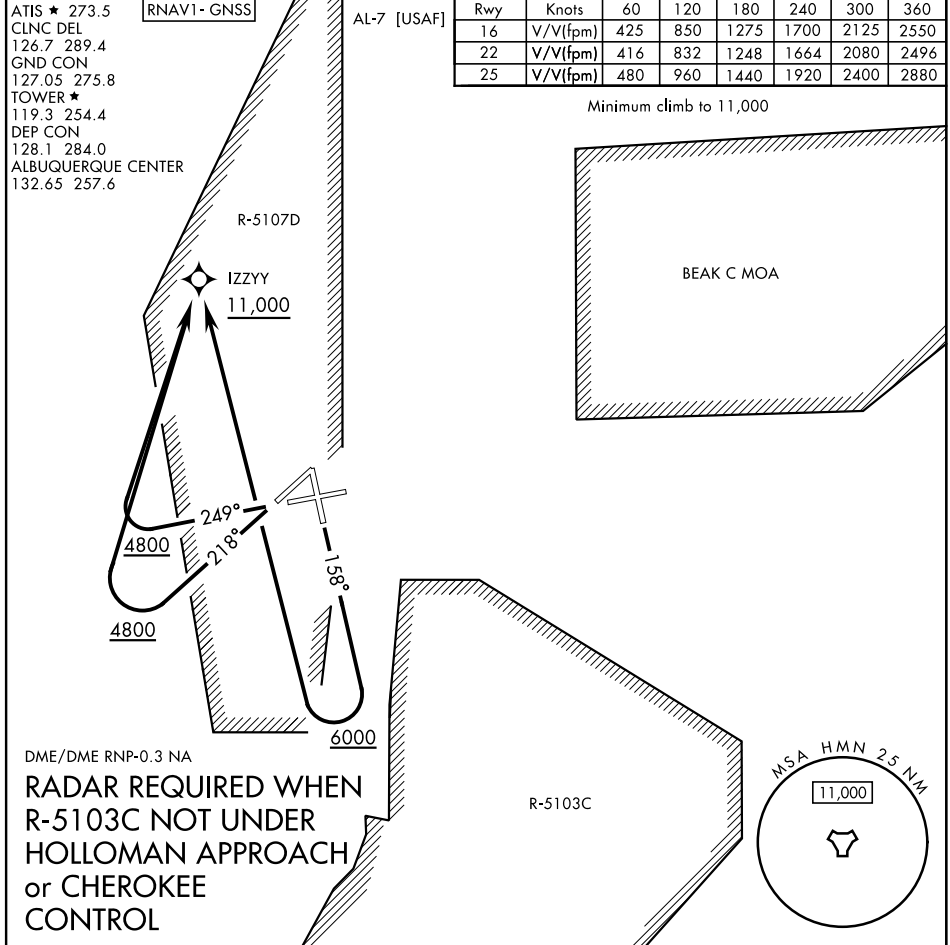
ATIS ★ 273.5
 CLNC DEL 126.7 289.4
 GND CON 127.05 275.8
 TOWER ★ 119.3 254.4
 DEP CON 128.1 284.0
 ALBUQUERQUE CENTER 132.65 257.6

RNAV1-GNSS

AL-7 [USAF]

Rwy	Knots	60	120	180	240	300	360
16	V/V(fpm)	425	850	1275	1700	2125	2550
22	V/V(fpm)	416	832	1248	1664	2080	2496
25	V/V(fpm)	480	960	1440	1920	2400	2880

Minimum climb to 11,000



SW-1, 17 APR 2025 to 15 MAY 2025

SW-1, 17 APR 2025 to 15 MAY 2025

DME/DME RNP-0.3 NA

**RADAR REQUIRED WHEN
 R-5103C NOT UNDER
 HOLLOMAN APPROACH
 or CHEROKEE
 CONTROL**



DEPARTURE ROUTE DESCRIPTION

TAKEOFF RWY 16: Climb on track 158° when leaving 6000 turn right direct IZZYY, then via assigned routing. Cross IZZYY at or above 11,000.

TAKEOFF RWY 22: Climb on track 218° when leaving 4800 turn right direct IZZYY, then via assigned routing. Cross IZZYY at or above 11,000.

TAKEOFF RWY 25: Climb on track 249° when leaving 4800 turn right direct IZZYY, then via assigned routing. Cross IZZYY at or above 11,000.

IZZYY ONE DEPARTURE (RNAV) (IZZYY1•IZZYY)

Amdt1 10AUG23

ALAMOGORDO, NEW MEXICO

HOLLOMAN AFB (KHMN)