

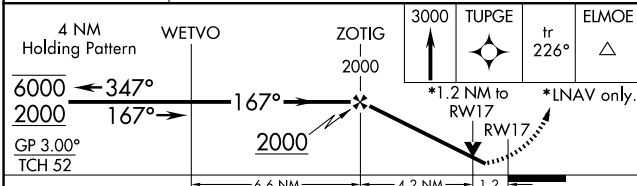
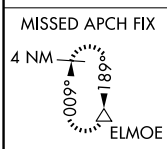
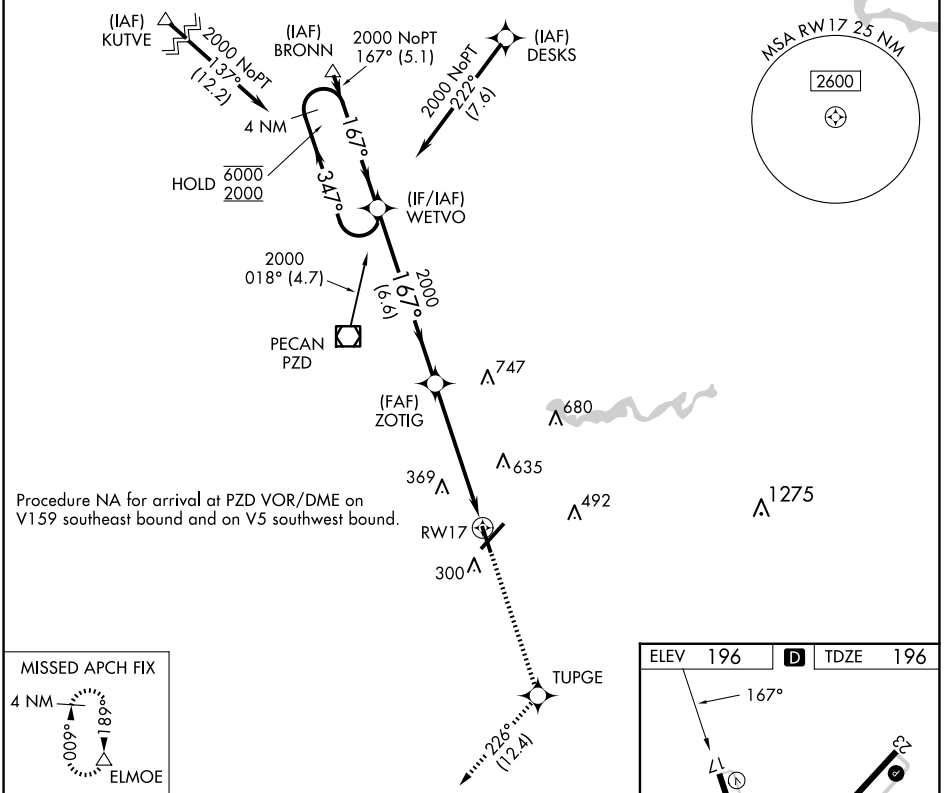
WAAS CH 48815 W17A	APP CRS 167°	Rwy Idg TDZE 196 Apt Elev 196	5200
--	------------------------	---	-------------

RNAV (GPS) RWY 17

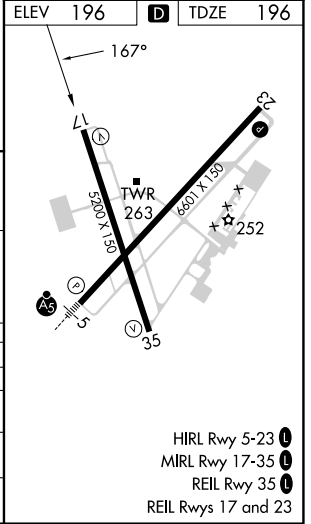
SOUTHWEST GEORGIA RGNL (ABY)

RNP APCH.
 ▼ Rwy 17 helicopter visibility reduction below 3/4 SM NA. For uncompensated Baro-VNAV systems, LNAV/VNAV NA below -7°C or above 54°C.
 MISSED APPROACH: Climb to 3000 direct TUPGE and on track 226° to ELMOE and hold.

ATIS 133.05	JACKSONVILLE CENTER 125.75 363.075	ALBANY TOWER * 120.25 (CTAF) 0336.4	GND CON 121.9 348.6	UNICOM 122.95
-----------------------	--	---	-------------------------------	-------------------------



CATEGORY	A	B	C	D
LPV DA		534-1 1/4	338 (400-1 1/4)	
LNAV/VNAV DA		603-1 1/2	407 (500-1 1/2)	
LNAV MDA	640-1	444 (500-1)	640-1 1/4 444 (500-1 1/4)	640-1 1/2 444 (500-1 1/2)
CIRCLING	640-1 444 (500-1)	660-1 464 (500-1)	940-2 1/4 744 (800-2 1/4)	940-2 1/2 744 (800-2 1/2)



SE-4, 17 APR 2025 to 15 MAY 2025

SE-4, 17 APR 2025 to 15 MAY 2025

HIRL Rwy 5-23
MIRL Rwy 17-35
REIL Rwy 35
REIL Rwy 17 and 23