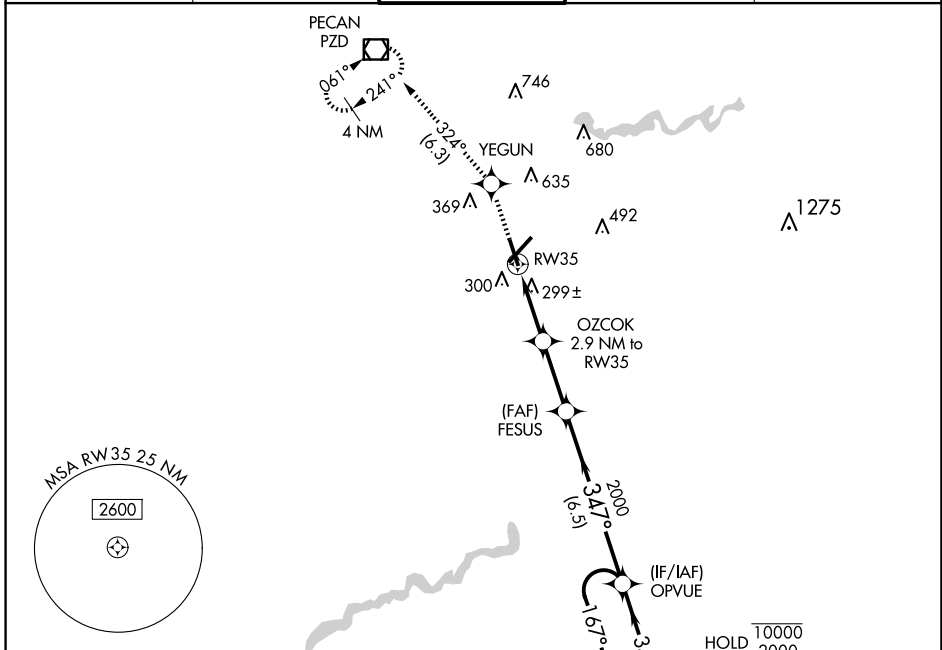


WAAS CH 97415 W35A	APP CRS 347°	Rwy Idg 5200 TDZE 196 Apt Elev 196
----------------------------------------	------------------------	---------------------------------------------------------------

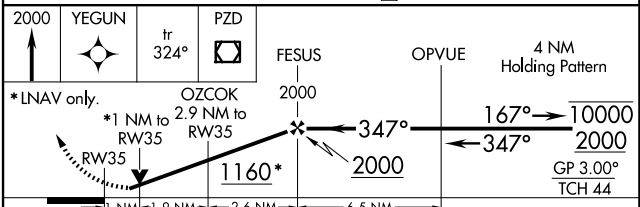
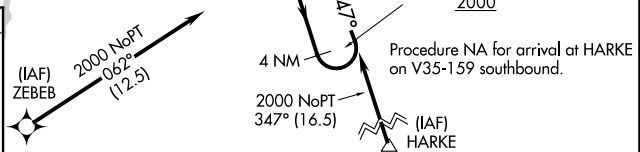
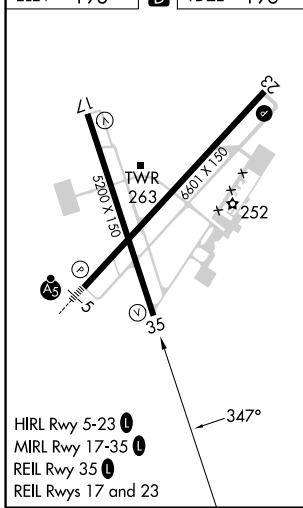
RNAV (GPS) RWY 35

SOUTHWEST GEORGIA RGNL (ABY)

RNP APCH.		MISSED APPROACH: Climb to 2000 direct YEGUN and on track 324° to PZD VOR/DME and hold.		
▼ For uncompensated Baro-VNAV systems, LNAV/VNAV NA below -7°C or above 54°C. Rwy 35 helicopter visibility reduction below 3/4 SM NA.				
ATIS 133.05	JACKSONVILLE CENTER 125.75 363.075	ALBANY TOWER * 120.25 (CTAF) 0336.4	GND CON 121.9 348.6	UNICOM 122.95



ELEV 196	D TDZE 196
----------	-------------------



2000	YEGUN	tr 324°	PZD	FESUS	OPVUE	4 NM Holding Pattern
*LNAV only.						
*1 NM to RW35						
*2.9 NM to RW35						
1160*						
2000						
GP 3.00'						
TCH 44						
CATEGORY	A	B	C	D		
LPV DA	495-1 299 (300-1)					
LNAV/VNAV DA	475-1 279 (300-1)					
LNAV MDA	560-1 364 (400-1)					
C CIRCLING	640-1 444 (500-1)	660-1 464 (500-1)	940-2 1/4 744 (800-2/4)	940-2 1/2 744 (800-2 1/2)		

SE-4, 17 APR 2025 to 15 MAY 2025

SE-4, 17 APR 2025 to 15 MAY 2025