

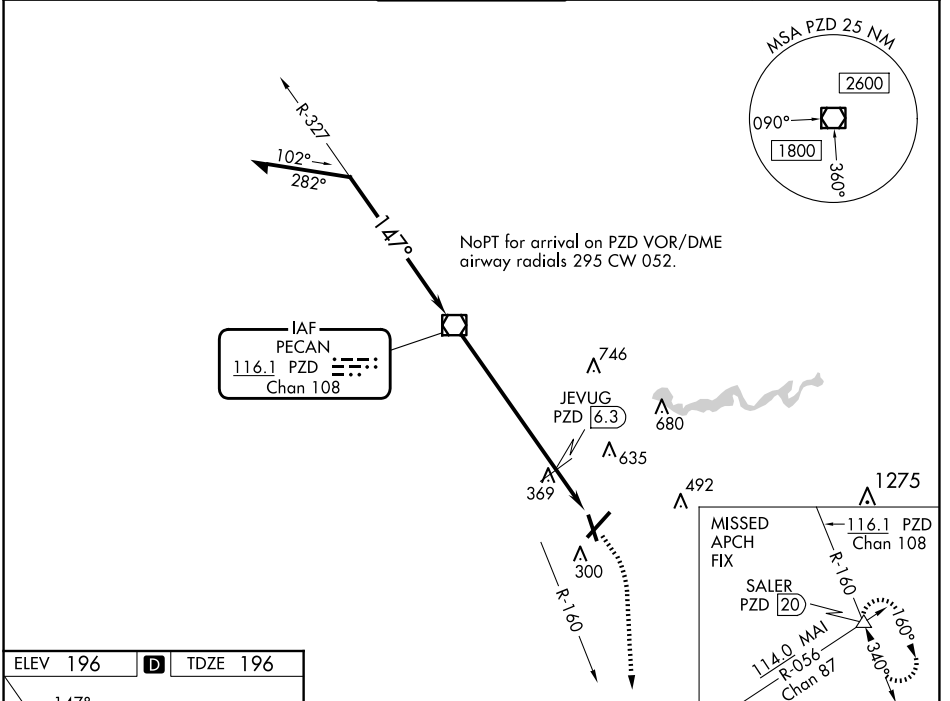
VOR/DME PZD <b>116.1</b> Chan <b>108</b>	APP CRS <b>147°</b>	Rwy Idg <b>5200</b> TDZE <b>196</b> Apt Elev <b>196</b>
--	------------------------	---

# VOR RWY 17

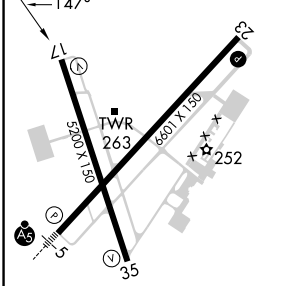
SOUTHWEST GEORGIA RGNL (ABY)

**▼** Rwy 17 helicopter visibility reduction below 3/4 SM NA.  
**▲** MISSED APPROACH: Climb to 1000 then climbing right turn to 3000 on heading 170° and PZD VOR/DME R-160 to SALER INT/20 DME and hold.

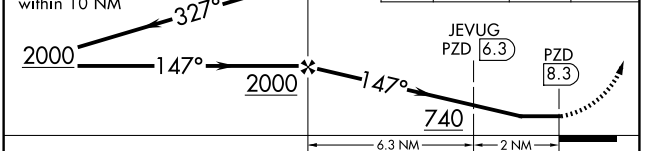
ATIS <b>133.05</b>	JACKSONVILLE CENTER <b>125.75 363.075</b>	ALBANY TOWER * <b>120.25(CTAF) 0336.4</b>	GND CON <b>121.9 348.6</b>	UNICOM <b>122.95</b>
-----------------------	--	--	-------------------------------	-------------------------



ELEV <b>196</b>	<b>D</b>	TDZE <b>196</b>
-----------------	----------	-----------------



VGSI and descent angles not coincident (VGSI Angle 3.00/TCH 49).  
 Remain within 10 NM



CATEGORY	A	B	C	D
S-17	740-1	544 (600-1)	740-1½	544 (600-1½)
<b>C</b> CIRCLING	740-1	544 (600-1)	940-2¼ 744 (800-2¼)	940-2½ 744 (800-2½)
JEVUG FIX MINIMUMS				
S-17	640-1	444 (500-1)	640-1¾	444 (500-1¾)
<b>C</b> CIRCLING	640-1 444 (500-1)	660-1 464 (500-1)	940-2¼ 744 (800-2¼)	940-2½ 744 (800-2½)

HIRL Rwy 5-23 **Ⓛ**  
 MIRL Rwy 17-35 **Ⓛ**  
 REIL Rwy 35 **Ⓛ**  
 REIL Rws 17 and 23

FAF to MAP 8.3 NM

Knots	60	90	120	150	180
Min:Sec	8:18	5:32	4:09	3:19	2:46

SE-4, 17 APR 2025 to 15 MAY 2025

SE-4, 17 APR 2025 to 15 MAY 2025