


LOC/DME I-SPT 111.9 Chan 56	APP CRS 079°	Rwy Idg 12793 TDZE 5320 Apt Elev 5355
---	------------------------	--

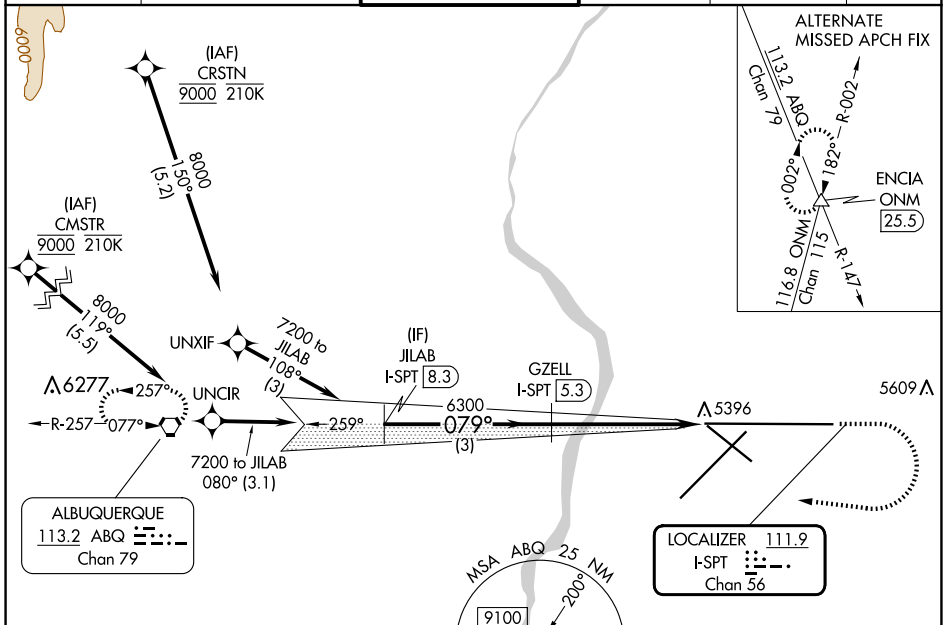
ILS or LOC RWY 8

ALBUQUERQUE INTL SUNPORT (ABQ)

DME required. RNAV 1 - GPS or RADAR required for procedure entry.
 For inop ALS, increase S-LOC 8 Cat C and D visibility to RVR 6000.
 ASR

MALSR

 MISSED APPROACH: Climb to 8000 then climbing right turn to 8000 direct ABQ VORTAC and hold.

D-ATIS 118.0 257.7	ALBUQUERQUE APP CON 123.9 354.1	ALBUQUERQUE TOWER 120.3 351.9	GND CON 121.9 348.6	CLNC DEL 119.2 259.3	CPDLC
------------------------------	---	---	-------------------------------	--------------------------------	-------



SW-1, 17 APR 2025 to 15 MAY 2025

SW-1, 17 APR 2025 to 15 MAY 2025

ELEV 5355	TDZE 5320
-----------	-----------

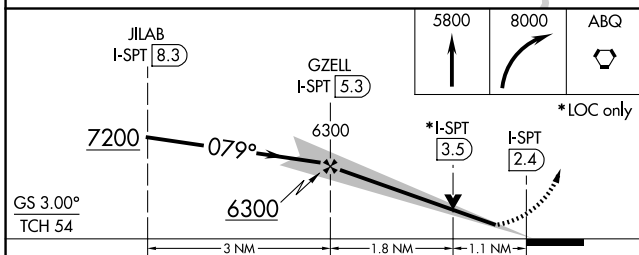


Diagram details:
 - TWR 5533
 - MSL 5320
 - 13793 X 150
 - 6000 X 150
 - 10000 X 150
 - 0.5% DOWN
 - MIRS Rwy 12-30
 - TDZ/CL Rwy 3 and 8
 - HIRL Rwy 3-21 and 8-26
 - REIL Rwy 21, 26, and 30
 - FAF to MAP 2.9 NM
 - Knots: 60, 90, 120, 150, 180
 - Min:Sec: 2:54, 1:56, 1:27, 1:10, 0:58

CATEGORY	A	B	C	D
S-ILS 8	5527/18		207 (200-½)	
S-LOC 8	5720/24	400 (400-½)	5720/40	400 (400-¾)
CIRCLING	5840-1 485 (500-1)	5920-1 565 (600-1)	5940-1½ 585 (600-1½)	NA