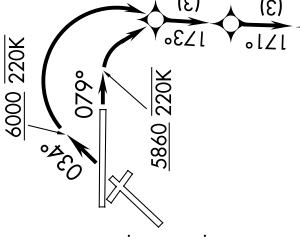
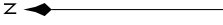


MNZNO THREE DEPARTURE (RNAV)

D-ATIS
118.0 257.7
CLNC DEL
119.2 259.3
CPDIC
GND CON
121.9 348.6
ALBUQUERQUE TOWER
120.3 351.9
ALBUQUERQUE DEP CON
123.9 354.1



TAKEOFF MINIMUMS

Rwy 3: Standard with minimum climb of 500' per NM to 9000. Minimum obstacle climb gradient after YUGLU is 420' per NM to 11900.

Rwy 8: Standard with minimum climb of 515' per NM to 9000. Minimum obstacle climb gradient after YUGLU is 420' per NM to 11900.

NOTE: Takeoff Rwy 3, do not exceed 220K until passing 6000.

NOTE: Takeoff Rwy 8, do not exceed 220K until passing 5860.

NOTE: Do not exceed 250K until passing MNZNO.

NOTE: DME/DME/IRU or GPS required.

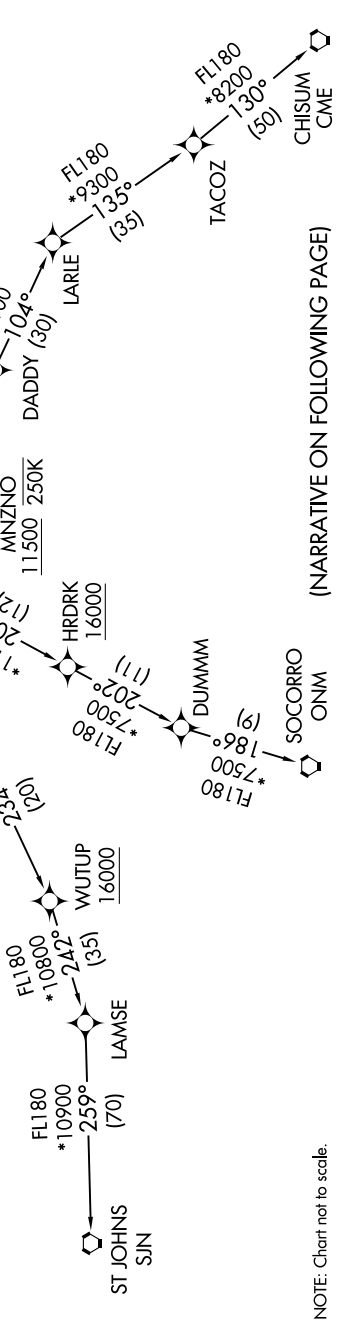
NOTE: For turboprop aircraft only.

NOTE: RNAV 1.

NOTE: RADAR required.

NOTE: If unable to accept climb gradient, advise ATC on initial contact.

NOTE: For non-GPS equipped aircraft ONM DME must be operational.



(NARRATIVE ON FOLLOWING PAGE)

NOTE: Chart not to scale.

MNZNO THREE DEPARTURE (RNAV)