

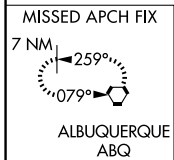
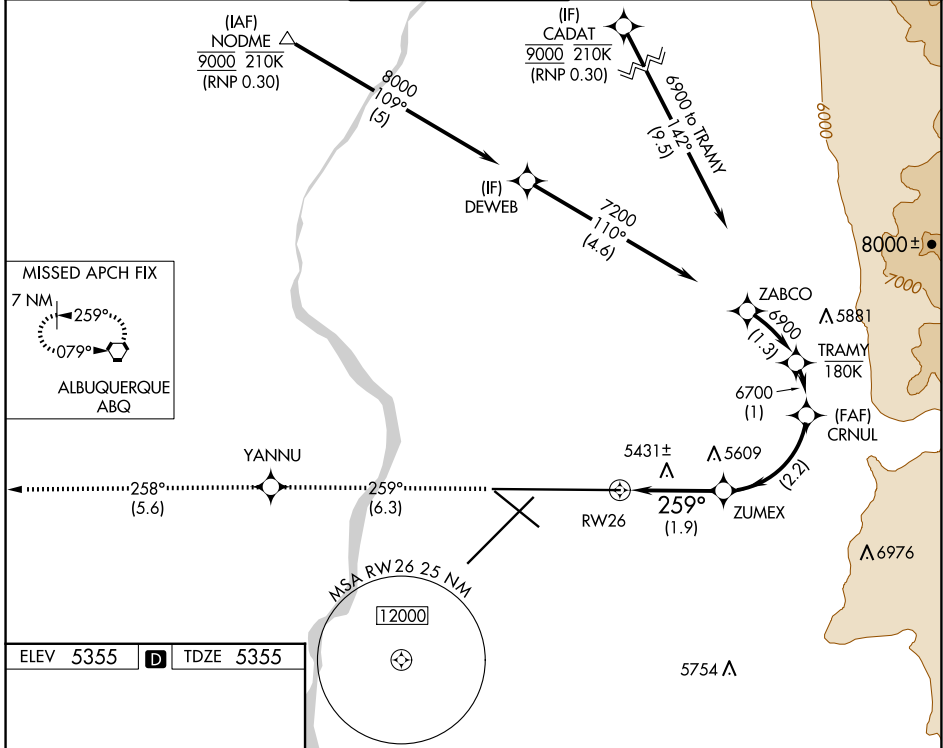
APP CRS <b>259°</b>	Rwy Idg <b>13793</b>
	TDZE <b>5355</b>
	Apt Elev <b>5355</b>

# RNAV (RNP) Y RWY 26

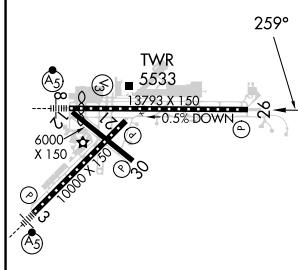
ALBUQUERQUE INTL SUNPORT (ABQ)

RNP AR APCH, RF required.		MISSED APPROACH: Climb to 8000 on track 259° to YANNU and on track 258° to ABQ VORTAC and hold.			
ASR For uncompensated Baro-VNAV systems, procedure NA below -12°C or above 48°C.					

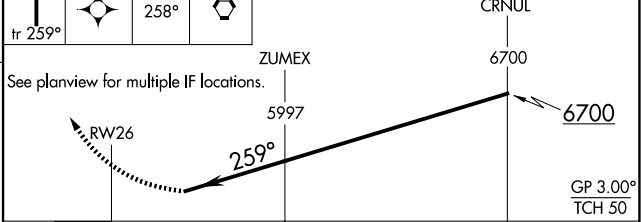
D-ATIS <b>118.0 257.7</b>	ALBUQUERQUE APP CON <b>123.9 354.1</b>	ALBUQUERQUE TOWER <b>120.3 351.9</b>	GND CON <b>121.9 348.6</b>	CLNC DEL <b>119.2 259.3</b>	CPDLC
------------------------------	---	---	-------------------------------	--------------------------------	-------



ELEV 5355	<b>D</b>	TDZE 5355
-----------	----------	-----------



8000	YANNU	tr 259°	ABQ	VGSI and RNAV glidepath not coincident (VGSI Angle 3.00/TCH 83).
------	-------	---------	-----	--



CATEGORY	A	B	C	D
RNP 0.15 DA	5728-1¼ 373 (400-1¼)			

**AUTHORIZATION REQUIRED**

MIRL Rwy 12-30  
TDZ/CL Rwy 3 and 8  
HIRL Rwy 3-21 and 8-26  
REIL Rwy 21, 26, and 30

SW-1, 17 APR 2025 to 15 MAY 2025

SW-1, 17 APR 2025 to 15 MAY 2025