

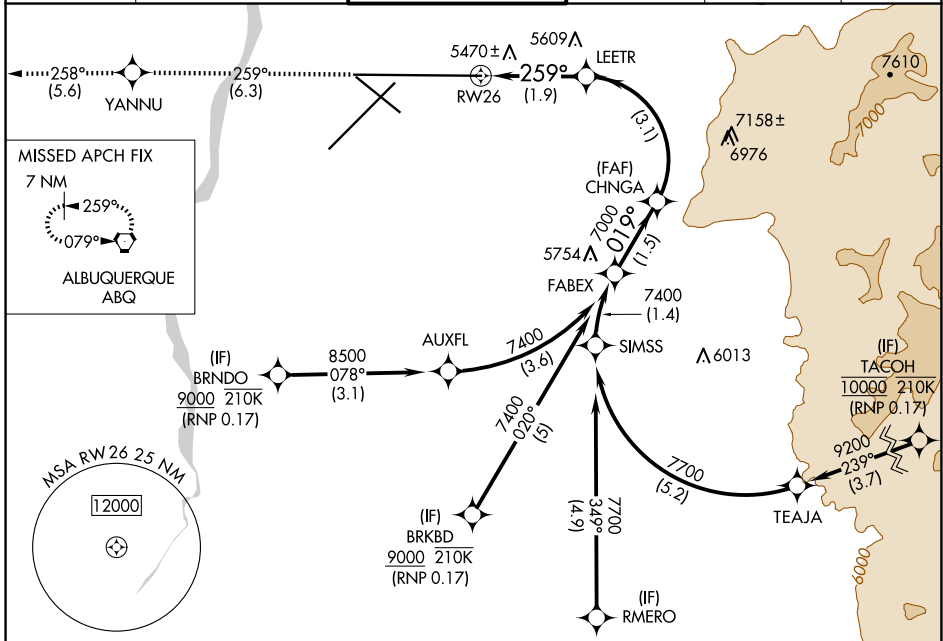
APP CRS	Rwy Idg	13793
259°	TDZE	5355
	Apt Elev	5355

RNAV (RNP) Z RWY 26

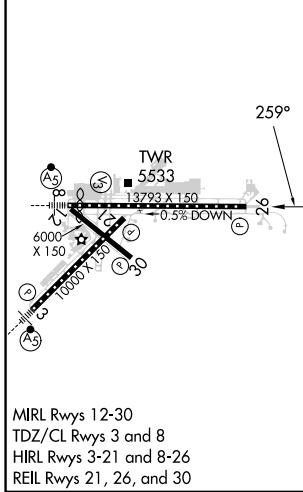
ALBUQUERQUE INTL SUNPORT (ABQ)

RNP AR APCH, RF required.		MISSED APPROACH: Climb to 8000 on track 259° to YANNU and on track 258° to ABQ VORTAC and hold.			
For uncompensated Baro-VNAV systems, procedure NA ASR below -13°C or above 48°C.					

D-ATIS	ALBUQUERQUE APP CON	ALBUQUERQUE TOWER	GND CON	CLNC DEL	CPDLC
118.0 257.7	123.9 354.1	120.3 351.9	121.9 348.6	119.2 259.3	



ELEV 5355	D	TDZE 5355
-----------	----------	-----------



8000	YANNU	ABQ	VGSI and RNAV glidepath not coincident (VGSI Angle 3.00/TCH 83).	
tr 259°	tr 258°		FABEX	
See planview for multiple IF locations.			CHNGA	
	LEETR		7000	7400
			019°	7400
			7000	
				GP 3.00° TCH 50
			1.9 NM	3.1 NM
1.9 NM	3.1 NM	1.5 NM		
CATEGORY	A	B	C	D
RNP 0.17 DA	5745-1¼		390 (400-1¼)	
AUTHORIZATION REQUIRED				

SW-1, 17 APR 2025 to 15 MAY 2025

SW-1, 17 APR 2025 to 15 MAY 2025