

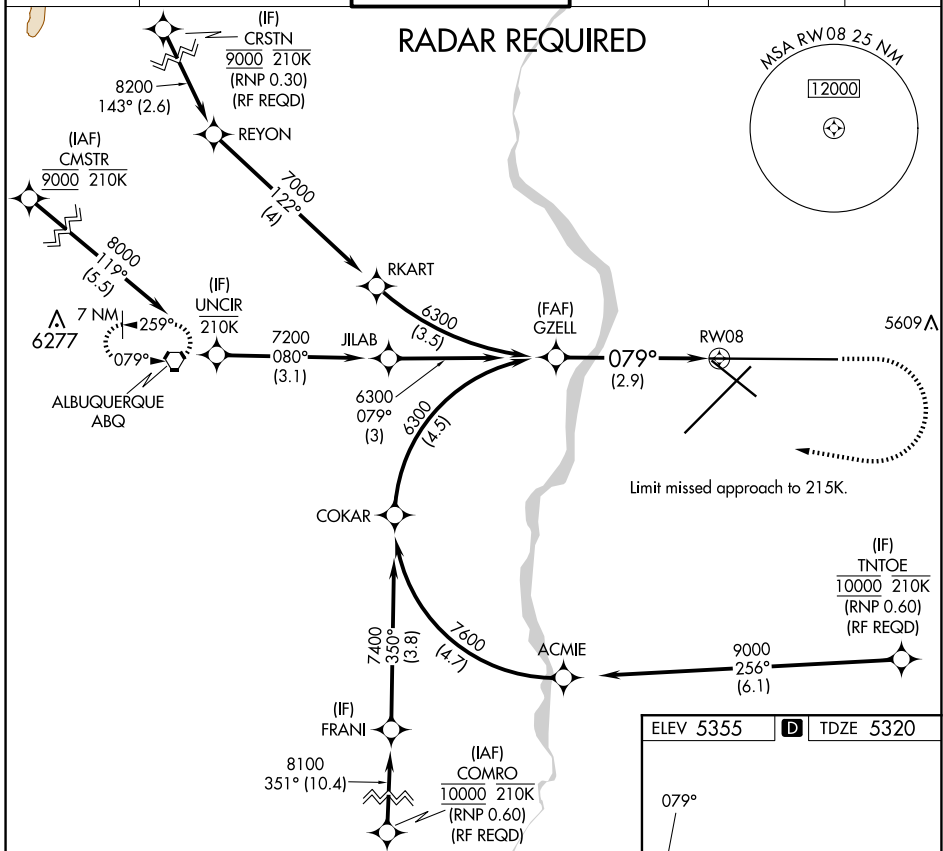
APP CRS 079°	Rwy Idg 12793 TDZE 5320 Apt Elev 5355
------------------------	--

RNAV (RNP) Z RWY 8

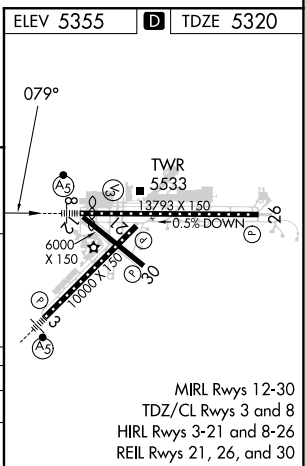
ALBUQUERQUE INTL SUNPORT (ABQ)

<p>ASR For uncompensated Baro-VNAV systems, procedure NA below -12°C (11°F) or above 47°C (117°F). For inop MALSRL, increase RNP 0.30 all Cats visibility to RVR 4700. GPS required.</p>	<p>MALSRL</p>	<p>MISSED APPROACH: Climb to 5900 then climbing right turn to 8000 direct ABQ VORTAC and hold.</p>
---	----------------------	---

D-ATIS 118.0 257.7	ALBUQUERQUE APP CON 123.9 354.1	ALBUQUERQUE TOWER 120.3 351.9	GND CON 121.9 348.6	CLNC DEL 119.2 259.3	CPDLC
------------------------------	---	---	-------------------------------	--------------------------------	-------



<p>GZELL VGSi and RNAV glidepath not coincident (VGSi Angle 2.95/TCH 55).</p> <p>6300</p> <p>GP 3.00° TCH 54</p> <p>See planview for multiple IF locations.</p> <p>2.9 NM</p>	<p>5900</p> <p>8000</p> <p>ABQ</p>
CATEGORY	A B C D
RNP 0.30 DA	5619/24 299 (300-1/2)
AUTHORIZATION REQUIRED	



SW-1, 17 APR 2025 to 15 MAY 2025

SW-1, 17 APR 2025 to 15 MAY 2025