

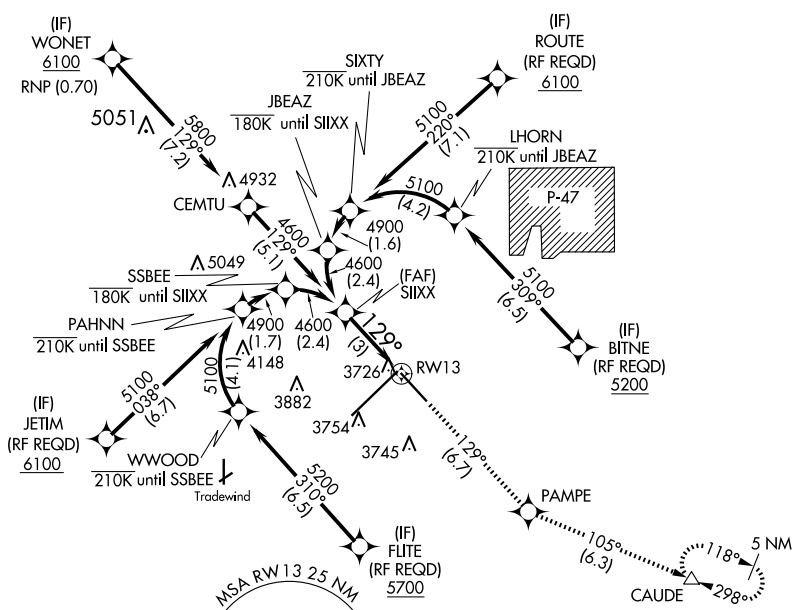
APP CRS	Rwy Idg	7901
129°	TDZE	3603
	Apt Elev	3607

RNAV (RNP) Z RWY 13

RICK HUSBAND AMARILLO INTL (AMA)

ASR	For uncompensated Baro-VNAV systems, procedure NA below -14°C (7°F) or above 51°C (124°F). GPS required.	MISSED APPROACH: Climb to 5400 on track 129° to PAMPE and track 105° to CAUDE and hold.
------------	--	--

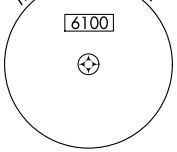
ATIS	AMARILLO APP CON*	AMARILLO TOWER*	GND CON	CLNC DEL	UNICOM
118.85 350.3	119.5 307.0	118.3(CTAF) 257.9	121.9 348.6	121.65 239.275	122.95



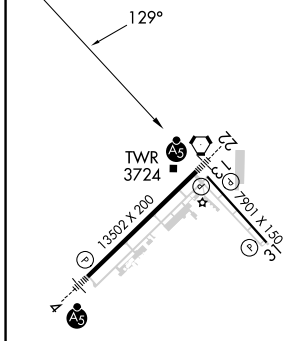
SC-2, 17 APR 2025 to 15 MAY 2025

SC-2, 17 APR 2025 to 15 MAY 2025

ELEV	3607	D	TDZE	3603
------	-------------	----------	------	-------------

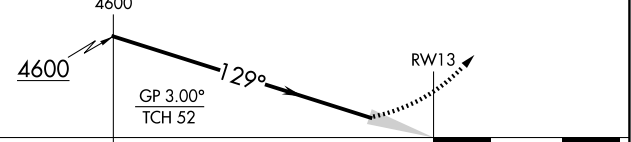


RNAV 1 - GPS or RADAR REQUIRED



See planview for multiple IF locations.

5400	PAMPE	CAUDE
↑	✧	△
tr 129°	tr 105°	



CATEGORY	A	B	C	D
RNP 0.30 DA		3976-1¼	373 (400-1¼)	

AUTHORIZATION REQUIRED