

APP CRS <b>309°</b>	Rwy Idg TDZE Apt Elev	<b>7901</b> <b>3601</b> <b>3607</b>
------------------------	-----------------------------	---

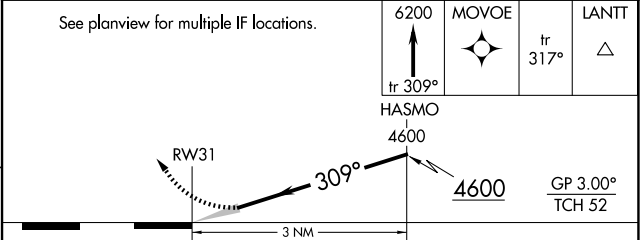
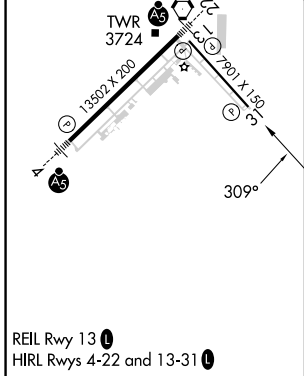
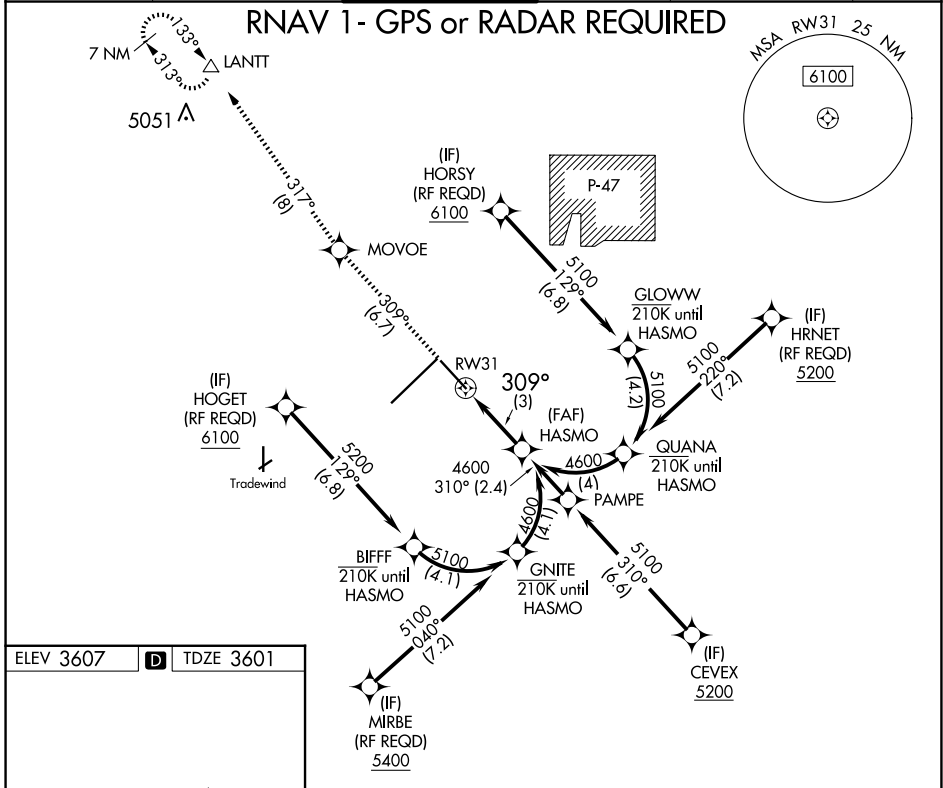
# RNAV (RNP) Z RWY 31

RICK HUSBAND AMARILLO INTL (AMA)

**ASR** For uncompensated Baro-VNAV systems, procedure NA below -14°C (7°F) or above 51°C (124°F). GPS required.

**MISSED APPROACH:** Climb to 6200 on track 309° to MOVOE and track 317° to LANITT and hold.

ATIS <b>118.85 350.3</b>	AMARILLO APP CON* <b>119.5 307.0</b>	AMARILLO TOWER* <b>118.3(CTAF) 257.9</b>	GND CON <b>121.9 348.6</b>	CLNC DEL <b>121.65 239.275</b>	UNICOM <b>122.95</b>
-----------------------------	---	---	-------------------------------	-----------------------------------	-------------------------



CATEGORY	A	B	C	D
RNP 0.30 DA		3930-1½	329 (400-1½)	

**AUTHORIZATION REQUIRED**

SC-2, 17 APR 2025 to 15 MAY 2025

SC-2, 17 APR 2025 to 15 MAY 2025