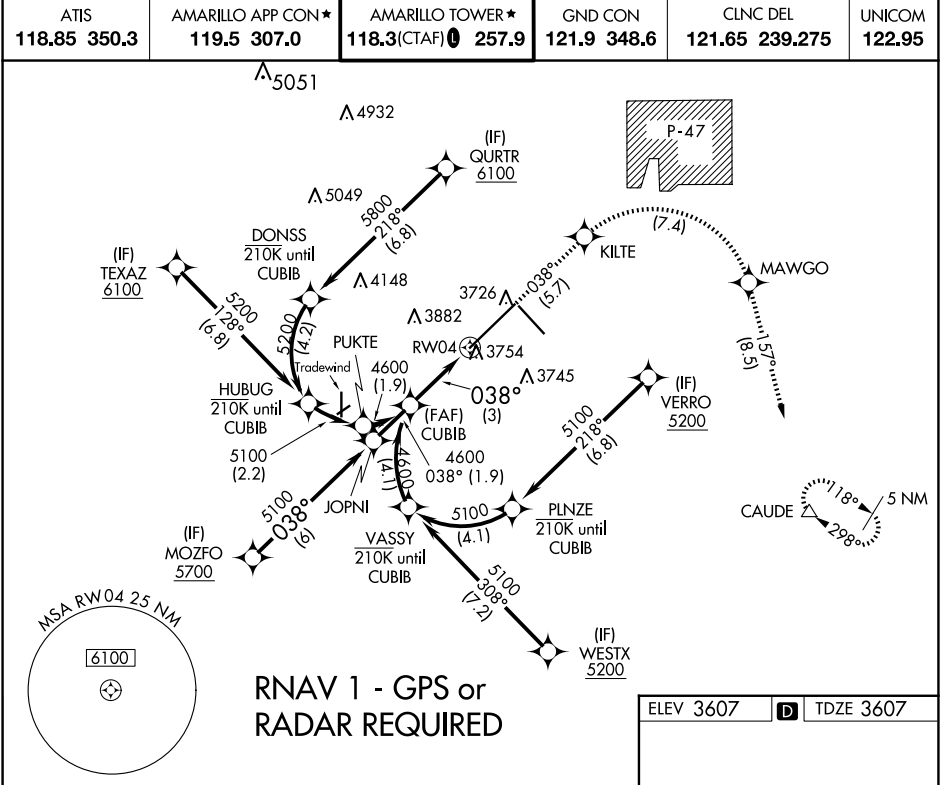


APP CRS 038°	Rwy Idg TDZE Apt Elev	13502 3607 3607
------------------------	-----------------------------	--

RNAV (RNP) Z RWY 4

RICK HUSBAND AMARILLO INTL (AMA)

ASR	For uncompensated Baro-VNAV systems, procedure NA below -14°C (7°F) or above 53°C (128°F). RF required. GPS required. For inop ALS, increase RNP 0.30 all Cats visibility to 1 1/2 SM.	MALSRS 	MISSED APPROACH: (Do not exceed 185K until MAWGO) Climb to 5400 on track 038° to KILTE, right turn to MAWGO, then track 157° to CAUDE and hold.					
	<table border="1"> <tr> <td>ATIS 118.85 350.3</td> <td>AMARILLO APP CON* 119.5 307.0</td> <td>AMARILLO TOWER* 118.3(CTAF) 0 257.9</td> <td>GND CON 121.9 348.6</td> <td>CLNC DEL 121.65 239.275</td> <td>UNICOM 122.95</td> </tr> </table>			ATIS 118.85 350.3	AMARILLO APP CON* 119.5 307.0	AMARILLO TOWER* 118.3(CTAF) 0 257.9	GND CON 121.9 348.6	CLNC DEL 121.65 239.275
ATIS 118.85 350.3	AMARILLO APP CON* 119.5 307.0	AMARILLO TOWER* 118.3(CTAF) 0 257.9	GND CON 121.9 348.6	CLNC DEL 121.65 239.275	UNICOM 122.95			



SC-2, 17 APR 2025 to 15 MAY 2025

SC-2, 17 APR 2025 to 15 MAY 2025

VGSI and RNAV glidepath not coincident (VGSI Angle 3.00/TCH 61).	5400 ↑ tr 038°	KILTE	MAWGO	CAUDE tr 157°
See planview for multiple IF locations.				
GP 3.00° TCH 44	4600			
CATEGORY	A	B	C	D
RNP 0.12 DA		3969/40	362 (400-3/4)	
RNP 0.30 DA		4019/50	412 (500-1)	
AUTHORIZATION REQUIRED				

