

ATLANTA, GEORGIA

AL-26 (FAA)

ILS PRM RWY 10 (CLOSE PARALLEL)

HARTSFIELD/JACKSON ATLANTA INTL (ATL)

LOC/DME I-OMO 111.55 Chan 52 (Y)	APP CRS 095°	Rwy Idg 9000 TDZE 1000 Apt Elev 1026
--	------------------------	---

DME or RADAR required. RNP APCH - GPS from YINNZ.

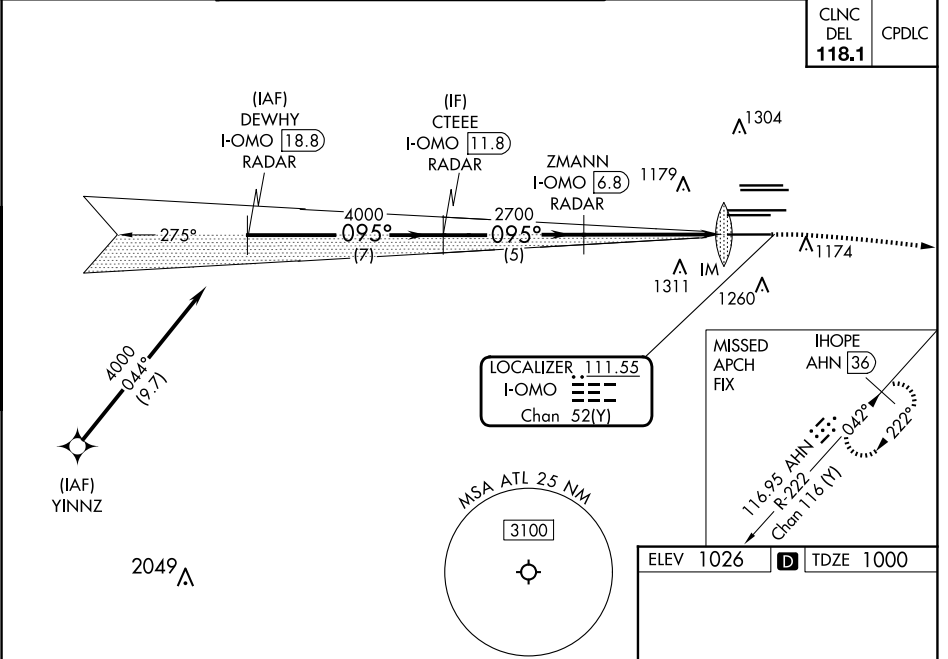
Simultaneous approach authorized. Procedure NA when glide slope not available (ILS procedures only). Dual VHF Comm required. See additional requirements on AAUP. Localizer not suitable for electronic rollout guidance.

ALSF-2

MISSED APPROACH: Climb to 1400 then climbing right turn to 3000 on heading 120° and AHN R-222 to IHOPE/AHN 36 DME and hold.

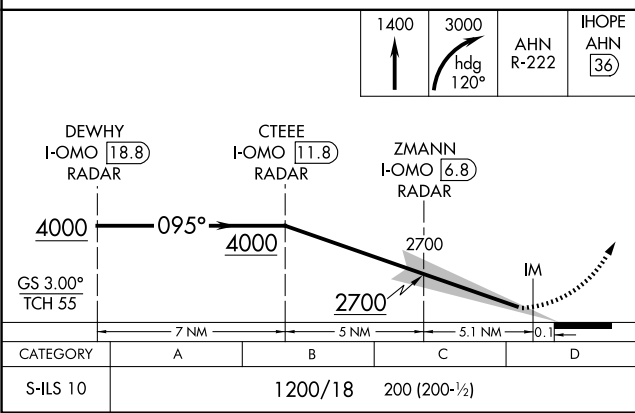
D-ATIS ARR 119.65 DEP 125.55	ATLANTA APP CON 127.9 379.9	ATLANTA TOWER 8L-26R 8R-26L 9L-27R 9R-27L 10-28 RWYS 119.1 125.325 123.85 119.3 119.5 254.4 PRM 133.425	ALL RWYS 121.9 121.75 121.65 254.4	GND CON 10-28 RWYS
--	--	--	---	-----------------------

CLNC DEL 118.1	CPDLC
-----------------------------	-------

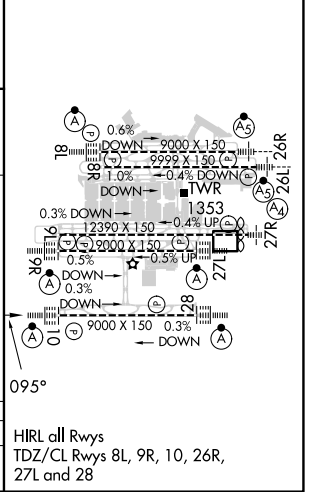


SE-4, 17 APR 2025 to 15 MAY 2025

SE-4, 17 APR 2025 to 15 MAY 2025



ELEV 1026	TDZE 1000
-----------	-----------



ATLANTA, GEORGIA
Amdt 5 30DEC21

33°38'N-84°26'W

HARTSFIELD/JACKSON ATLANTA INTL (ATL)
ILS PRM RWY 10 (CLOSE PARALLEL)

HIRL all Rwys
TDZ/CL Rwys 8L, 9R, 10, 26R,
27L and 28