

ATLANTA, GEORGIA

AL-26 (FAA)

# ILS PRM RWY 28 (CAT II) (CLOSE PARALLEL)

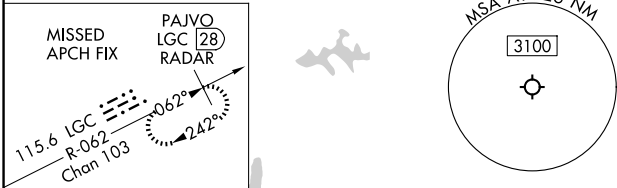
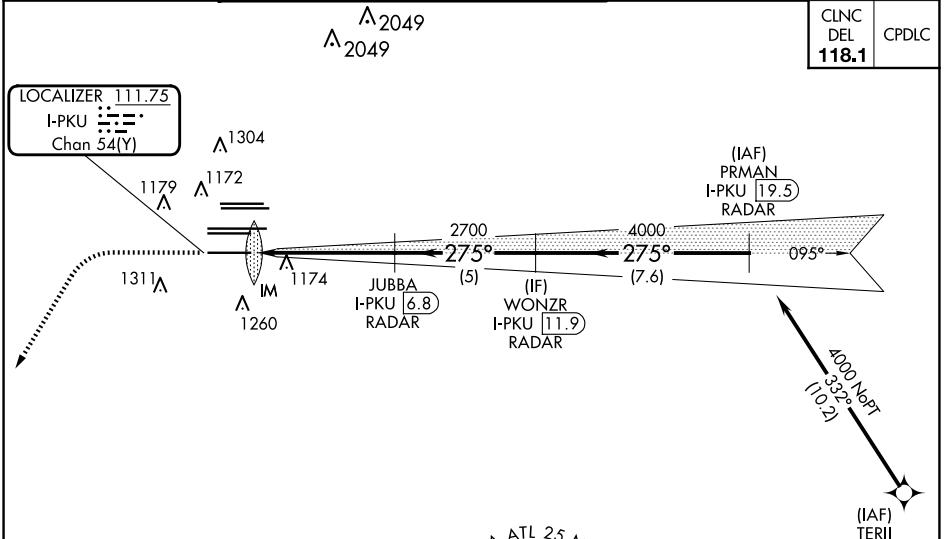
25051

LOC/DME I-PKU <b>111.75</b> Chan <b>54(Y)</b>	APP CRS <b>275°</b>	Rwy ldg <b>9000</b>
		TDZE <b>998</b>
		Apt Elev <b>1026</b>

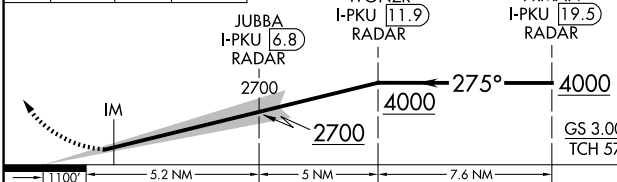
HARTSFIELD/JACKSON ATLANTA INTL (ATL)

RNAV 1-GPS or RADAR required for procedure entry. From TERII: RNAV 1-GPS required. DME or RADAR required.	ALSF-2 	MISSED APPROACH: Climb to 1500 then climbing left turn to 3000 on heading 216° and LGC VORTAC R-062 to PAJVO/LGC 28 DME/RADAR and hold.
Simultaneous approach authorized. Use of FD or AP required during simultaneous operations. Dual VHF comm required. See additional requirements on AAUP.		

D-ATIS ARR <b>119.65</b> DEP <b>125.55</b>	ATLANTA APP CON <b>127.9 379.9</b>	ATLANTA TOWER 8L-26R 8R-26L 9L-27R 9R-27L 10-28 RWYS <b>119.1 125.325 123.85 119.3 119.5 254.4</b> PRM <b>133.425</b>	ALL RWYS (8L-26R,8R-26L) (9L-27R,9R-27L) 10-28 <b>121.9 121.75 121.65 254.4</b>	GND CON <b>121.9 121.75 121.65 254.4</b>
--	---------------------------------------	--	---	---



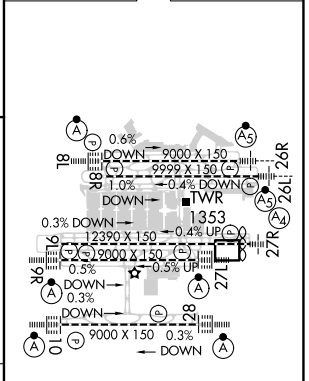
1500	3000	LGC R-062	PAJVO LGC (28)	VGSI and ILS glidepath not coincident (VGSI Angle 3.00/TCH 72).
hdg 216°				



CATEGORY	A	B	C	D
S-ILS 28	RA 188/12		100 DA 1098	
<b>CATEGORY II ILS - SPECIAL AIRCREW &amp; AIRCRAFT CERTIFICATION REQUIRED</b>				

CLNC DEL	CPDLC
<b>118.1</b>	

ELEV 1026	TDZE 998
-----------	----------



HIRL all Rwys  
TDZ/CL Rrws 8L, 9R,  
10, 26R, 27L and 28

SE-4, 17 APR 2025 to 15 MAY 2025

SE-4, 17 APR 2025 to 15 MAY 2025

ATLANTA, GEORGIA  
Amdt 5 07OCT21

33°38'N-84°26'W

HARTSFIELD/JACKSON ATLANTA INTL (ATL)

# ILS PRM RWY 28 (CAT II) (CLOSE PARALLEL)