

ATLANTA, GEORGIA

AL-26 (FAA)

ILS PRM RWY 9R (CAT II & III)

25051

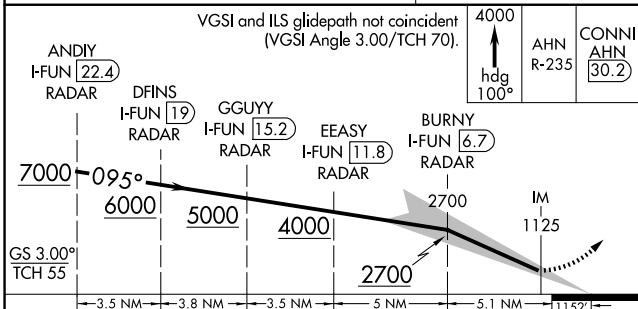
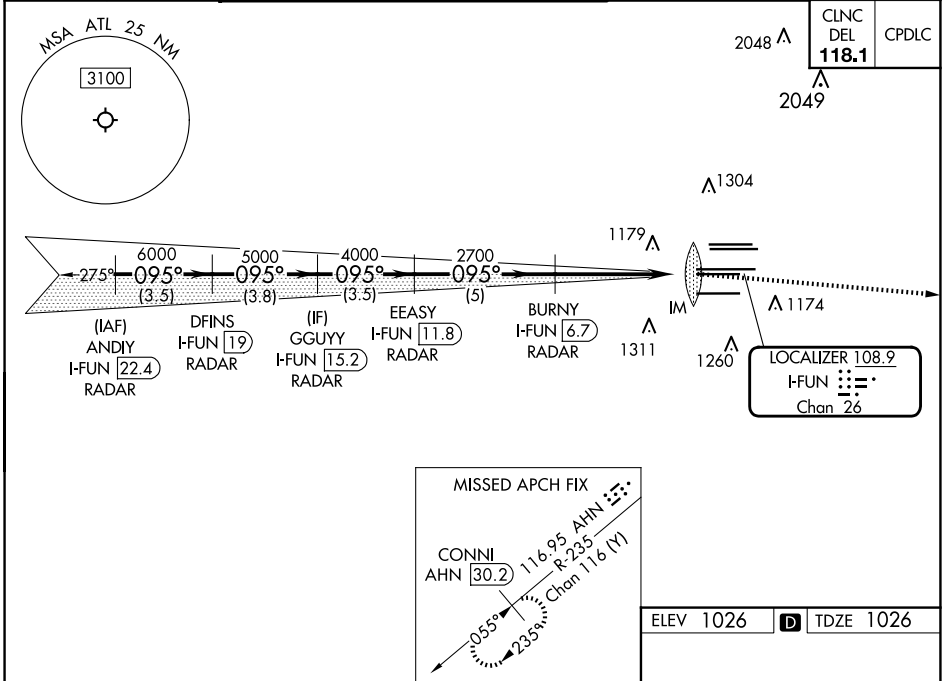
(CLOSE PARALLEL)

HARTSFIELD/JACKSON ATLANTA INTL (ATL)

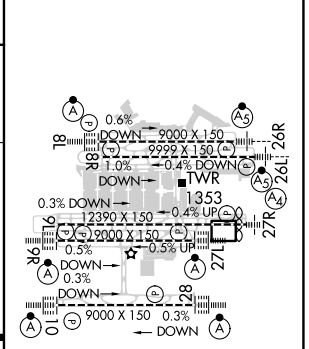
LOC/DME I-FUN <b>108.9</b> Chan <b>26</b>	APP CRS <b>095°</b>	Rwy Idg <b>9000</b> TDZE <b>1026</b> Apt Elev <b>1026</b>
---	------------------------	---

RADAR required for procedure entry, DME.		ALSf-2 	MISSED APPROACH: Climb to 4000 on heading 100° and AHN VOR/DME R-235 to CONNI/AHN 30.2 DME and hold.
<p>Simultaneous approach authorized. Use of FD or AP required during simultaneous operations. Dual VHF comm required. See additional requirements on AAUP.</p>			

D-ATIS ARR <b>119.65</b> DEP <b>125.55</b>	ATLANTA APP CON <b>127.9 379.9</b>	ATLANTA TOWER 8L-26R 8R-26L 9L-27R 9R-27L 10-28 RWYS <b>119.1 125.325 123.85 119.3 119.5 254.4</b> <b>PRM 132.55</b>				ALL RWYS <b>254.4</b>	GND CON <b>121.9</b>	ALL RWYS <b>121.75 121.65 254.4</b>
--	--	---	--	--	--	-----------------------------	-------------------------	---



ELEV 1026	TDZE 1026
-----------	-----------



CATEGORY	A	B	C	D
S-ILS 9R	CAT II RA 118/12 100 DA 1126			
S-ILS 9R	CAT III RVR 03			

**CATEGORY II & III ILS SPECIAL AIRCREW & AIRCRAFT CERTIFICATION REQUIRED**

HIRL all Rwws  
TDZ/CL Rwws 8L, 9R, 10, 26R, 27L and 28

ATLANTA, GEORGIA  
Amdt 3 22APR21

33°38'N-84°26'W HARTSFIELD/JACKSON ATLANTA INTL (ATL)  
**ILS PRM RWY 9R (CAT II & III) (CLOSE PARALLEL)**

SE-4, 17 APR 2025 to 15 MAY 2025

SE-4, 17 APR 2025 to 15 MAY 2025