


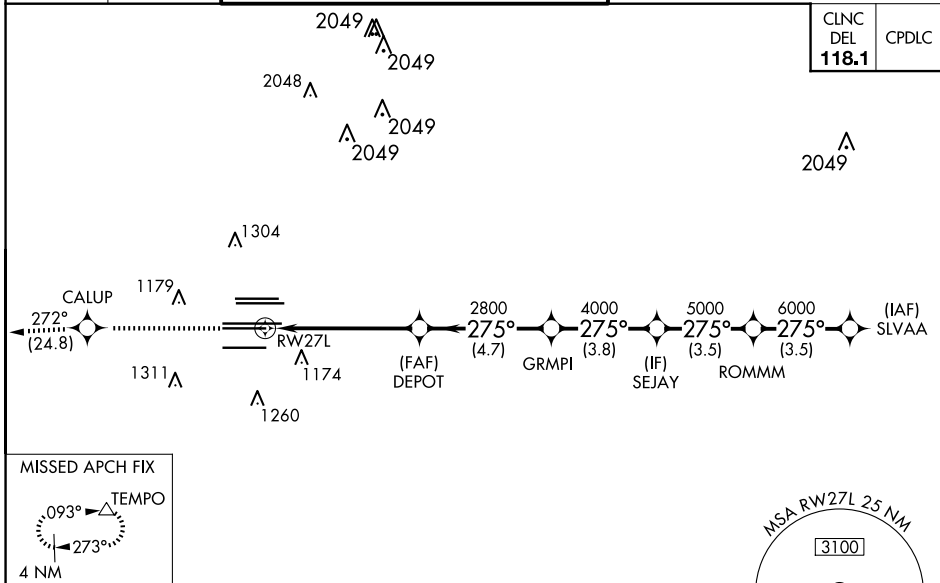
WAAS CH <b>65700</b> <b>W27A</b>	APP CRS <b>275°</b>	Rwy Idg <b>8865</b> TDZE <b>999</b> Apt Elev <b>1026</b>
--	------------------------	--

# RNAV (GPS) RWY 27L

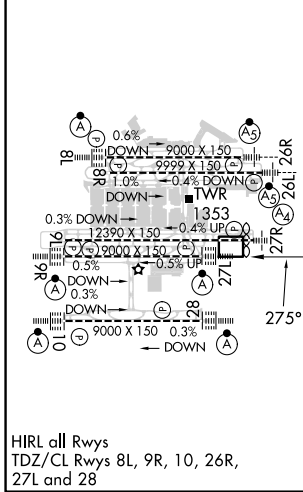
HARTSFIELD/JACKSON ATLANTA INTL (ATL)

<p>▼ For uncompensated Baro-VNAV systems, LNAV/VNAV NA below -7°C (20°F) or above 54°C (130°F). DME/DME RNP-0.3 NA. Simultaneous approach authorized with Rwy 26R or 26L. LNAV procedure NA during simultaneous operations. Use of FD or AP providing RNAV track guidance required during simultaneous operations.</p>	<p>ALSF-2</p> 	<p>MISSED APPROACH: Climb to 4000 direct CALUP and on track 272° to TEMPO and hold.</p>
--	---	---

D-ATIS ARR <b>119.65</b>	ATLANTA APP CON <b>127.9 379.9</b>	ATLANTA TOWER				ALL RWYS	GND CON	ALL RWYS
DEP <b>125.55</b>		8L-26R	8R-26L	9L-27R	9R-27L	10-28	(8L-26R,8R-26L) (9L-27R,9R-27L)	10-28
		<b>119.1</b>	<b>125.325</b>	<b>123.85</b>	<b>119.3</b>	<b>119.5</b>	<b>121.9</b>	<b>121.75</b>
					<b>254.4</b>			<b>121.65</b>
								<b>254.4</b>



ELEV 1026	D	TDZE 999
-----------	---	----------



ATLANTA, GEORGIA  
Amdt 5A 12OCT17

## RADAR REQUIRED

4000	CALUP	tr 272°	TEMPO	VGSI and RNAV glidepath not coincident (VGSI Angle 3.00/TCH 79).	SLVAA
*LNAV only.	DEPOT	GRMPI	SEJAY	ROMMMM	7000
	*1.7 NM to RWY27L	2800	4000	5000	6000
	1.7 NM	3.8 NM	4.7 NM	3.8 NM	3.5 NM
					GP 3.00° TCH 58
CATEGORY	A	B	C	D	
LPV DA	1199/18		200 (200-½)		
LNAV/VNAV DA	1528-1¾		529 (600-1¾)		
LNAV MDA	1620/24	621 (600-½)	1620-1¾	621 (600-1¾)	

# RNAV (GPS) RWY 27L

SE-4, 17 APR 2025 to 15 MAY 2025

SE-4, 17 APR 2025 to 15 MAY 2025