

WAAS CH <b>70400</b> <b>W27B</b>	APP CRS <b>275°</b>	Rwy Idg <b>11890</b> TDZE <b>985</b> Apt Elev <b>1026</b>
--	------------------------	---

# RNAV (GPS) RWY 27R

HARTSFIELD/JACKSON ATLANTA INTL (ATL)

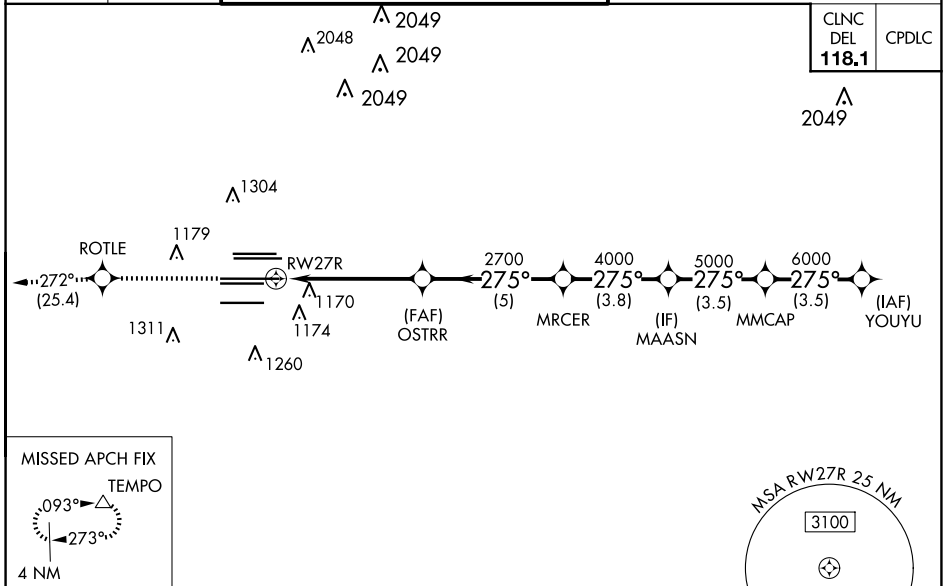
▼ For uncompensated Baro-VNAV systems, LNAV/VNAV NA below -7°C (20°F) or above 54°C (130°F). Simultaneous approach authorized with Rwy 26R or 26L or 28, or Rwy 26R and 28. DME/DME RNP-0.3 NA. For inop MALS, increase LNAV/VNAV Cat D visibility and LNAV Cats C and D visibility ¼ mile. LNAV procedure NA during simultaneous operations. Use of FD or AP providing RNAV track guidance required during simultaneous operations. Inop table does not apply to LPV, all Cats.

MALS

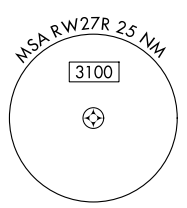
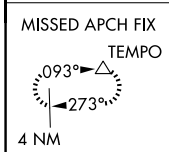


MISSED APPROACH:  
Climb to 4000 direct  
ROTLE and on track  
272° to TEMPO and  
hold.

D-ATIS ARR <b>119.65</b>	ATLANTA APP CON	ATLANTA TOWER					ALL RWYS	GND CON	ALL RWYS		
DEP <b>125.55</b>	<b>127.9 379.9</b>	8L-26R	8R-26L	9L-27R	9R-27L	10-28	(8L-26R,8R-26L)	(9L-27R,9R-27L)	10-28		
		<b>119.1</b>	<b>125.325</b>	<b>123.85</b>	<b>119.3</b>	<b>119.5</b>	<b>254.4</b>	<b>121.9</b>	<b>121.75</b>	<b>121.65</b>	<b>254.4</b>

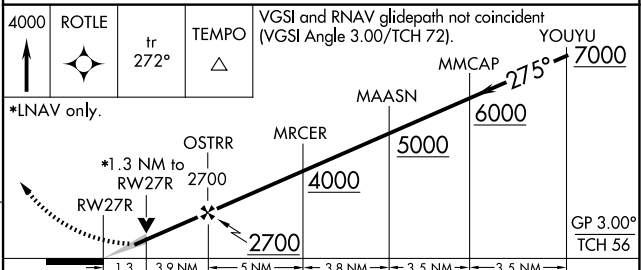
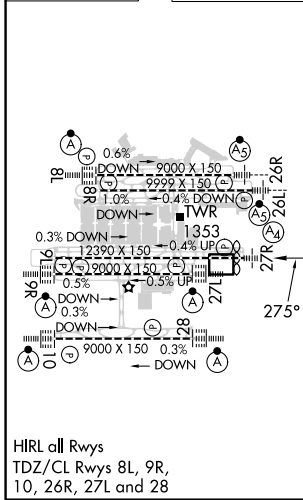


CLNC DEL	CPDLC
<b>118.1</b>	



**RADAR REQUIRED**

ELEV 1026	<b>D</b>	TDZE 985
-----------	----------	----------



CATEGORY	A	B	C	D
LPV DA		1185/40	200 (200-¾)	
LNAV/VNAV DA		1461-1⅓	476 (500-1⅓)	
LNAV MDA	1460/40	475 (500-¾)	1460/60	475 (500-1¼)

SE-4, 17 APR 2025 to 15 MAY 2025

SE-4, 17 APR 2025 to 15 MAY 2025