

ATLANTA, GEORGIA

AL-26 (FAA)

25051

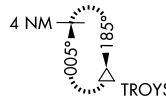
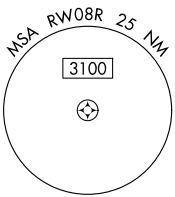
WAAS CH 48800 W08D	APP CRS 095°	Rwy Idg TDZE 1024 Apt Elev 1026	9999
--	------------------------	---	-------------

RNAV (GPS) RWY 8R

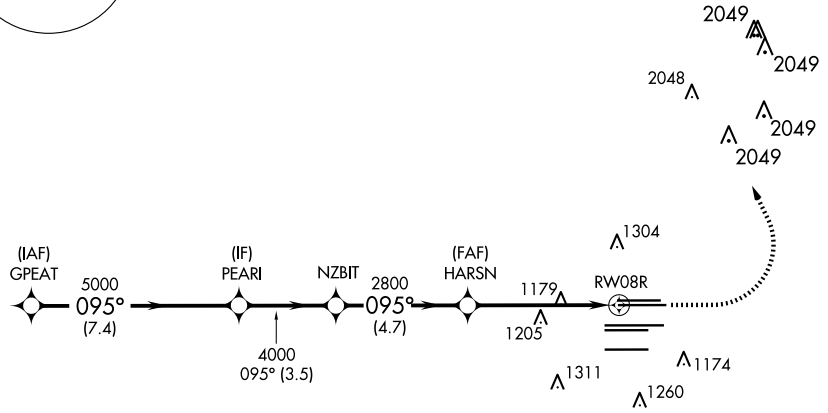
HARTSFIELD/JACKSON ATLANTA INTL (ATL)

RNP APCH - GPS. RADAR required.	MISSED APPROACH: Climb to 1500 then climbing left turn to 3500 direct TROYS and hold.
<p>▼ For uncompensated Baro-VNAV systems, LNAV/VNAV NA below -5°C or above 54°C. Simultaneous approach authorized with Rwy 9L or 9R or 10. LNAV procedure NA during simultaneous operations. Use of FD or AP providing RNAV track guidance required during simultaneous operations.</p>	

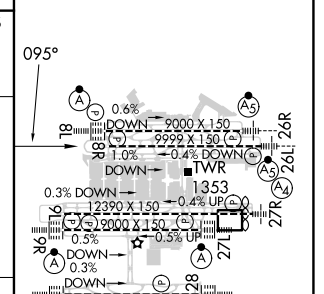
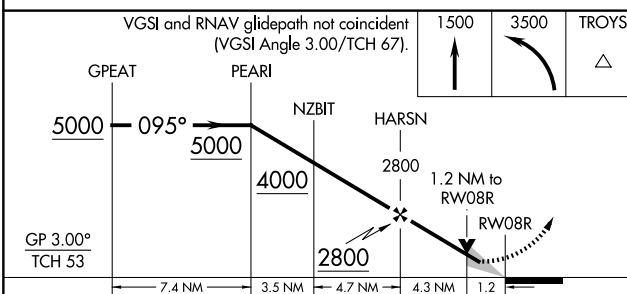
D-ATIS ARR 119.65 DEP 125.55	ATLANTA APP CON 127.9 379.9	ATLANTA TOWER 8L-26R 8R-26L 9L-27R 9R-27L 10-28 RWYS					ALL RWYS 121.9	GND CON (8L-26R,8R-26L) (9L-27R,9R-27L) 10-28	ALL RWYS 121.65 254.4
--	--	---	--	--	--	--	-----------------------------	--	------------------------------------



CLNC DEL 118.1	CPDLC
-----------------------------	-------



ELEV 1026	D TDZE 1024
-----------	--------------------



CATEGORY	A	B	C	D
LPV DA		1282/40	258 (300-¾)	
LNAV/VNAV DA		1440/60	416 (500-1¼)	
LNAV MDA	1460/55	436 (500-1)	1460-1¼	436 (500-1¼)

HIRL all Rwys
TDZ/CL Rwys 8L, 9R,
10, 26R, 27L and 28

SE-4, 17 APR 2025 to 15 MAY 2025

SE-4, 17 APR 2025 to 15 MAY 2025

ATLANTA, GEORGIA
Amdt 5 31OCT24

33°38'N-84°26'W

HARTSFIELD/JACKSON ATLANTA INTL (ATL) RNAV (GPS) RWY 8R