

ATLANTA, GEORGIA

AL-26 (FAA)

# RNAV (GPS) PRM RWY 9R (SIMULTANEOUS CLOSE PARALLEL) HARTSFIELD/JACKSON ATLANTA INTL (ATL)

25051

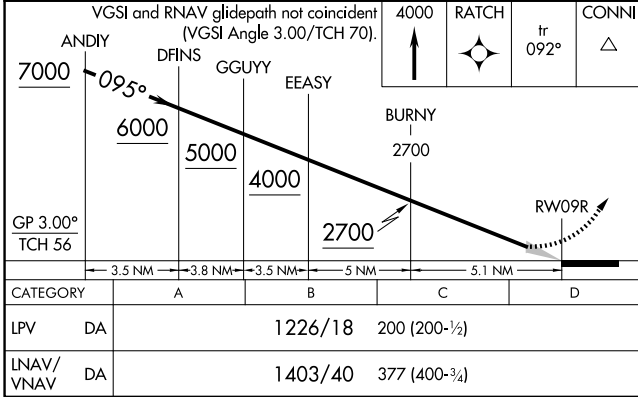
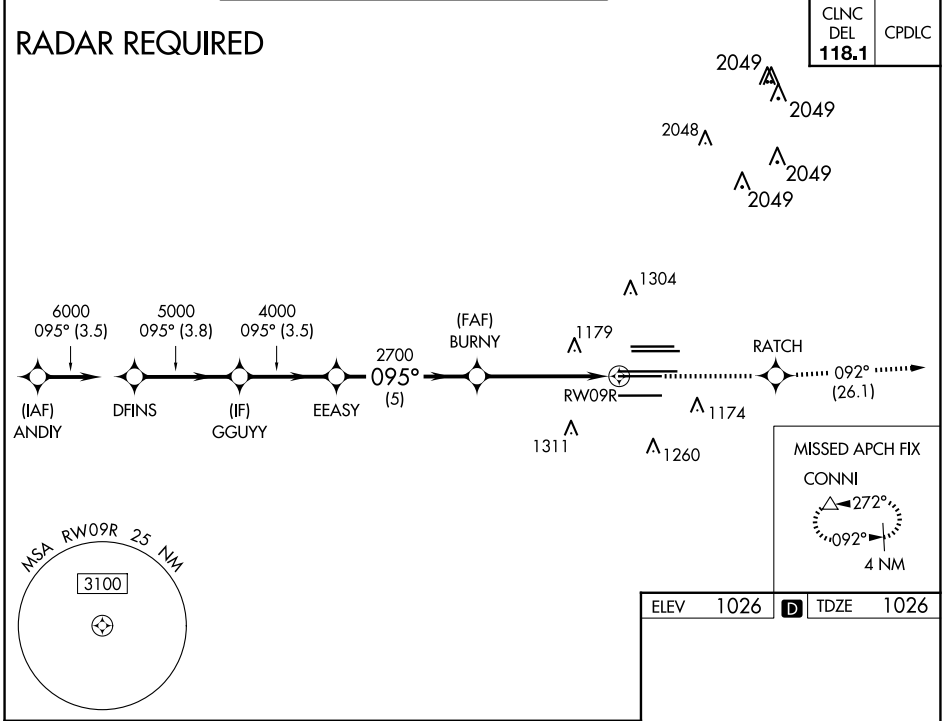
WAAS CH <b>97400</b> <b>W09B</b>	APP CRS <b>095°</b>	Rwy Idg TDZE <b>1026</b> Apt Elev <b>1026</b>
--	------------------------	---

**NA** For uncompensated Baro-VNAV systems, LNAV/VNAV NA below -7°C (20°F) or above 54°C (130°F). DME/DME RNP-0.3 NA. Simultaneous close parallel approach authorized with ILS PRM and RNAV PRM Rwy 8L or 8R or 10, or Rwy 8L and 10, or Rwy 8R and 10. Dual VHF comm required. See additional requirements on AAUP. Use of FD or AP providing RNAV track guidance required during simultaneous operations.

**ALS-F-2**

**MISSED APPROACH:**  
Climb to 4000 direct RATCH and on track 092° to CONNI and hold.

D-ATIS ARR <b>119.65</b> DEP <b>125.55</b>	ATLANTA APP CON <b>127.9 379.9</b>	ATLANTA TOWER 8L-26R 8R-26L 9L-27R 9R-27L 10-28 RWYS <b>119.1 125.325 123.85 119.3 119.5 254.4</b> PRM <b>132.55</b>	ALL RWYS (8L-26R,8R-26L) <b>121.9</b> (9L-27R,9R-27L) <b>121.75</b> 10-28 <b>102.65</b> ALL RWYS <b>254.4</b>
--	---------------------------------------	---	---



ELEV 1026	<input checked="" type="checkbox"/> TDZE 1026
-----------	---

**MISSED APCH FIX CONNI**  
272°  
092°  
4 NM

HIRL all Rwys  
TDZ/CL Rwys 8L, 9R, 10, 26R, 27L and 28

SE-4, 17 APR 2025 to 15 MAY 2025

SE-4, 17 APR 2025 to 15 MAY 2025