

WAAS CH <b>61000</b> <b>W26B</b>	APP CRS <b>275°</b>	Rwy Idg TDZE <b>990</b> Apt Elev <b>1026</b>
--	------------------------	--

# RNAV (GPS) Y RWY 26R

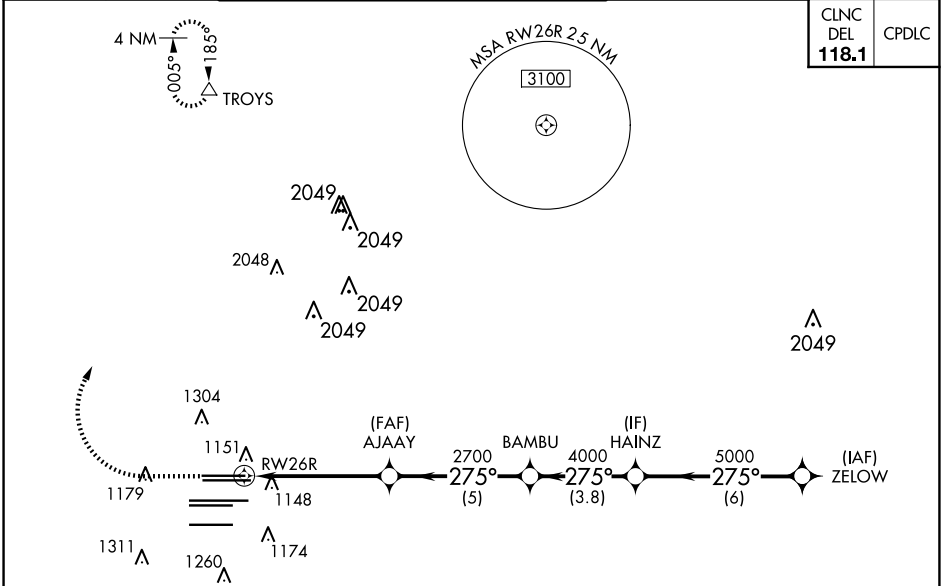
HARTSFIELD/JACKSON ATLANTA INTL (ATL)

**▽** For uncompensated Baro-VNAV systems, LNAV/VNAV NA below -7°C (20°F) or above 54°C (130°F). DME/DME RNP-0.3 NA. Simultaneous approach authorized with Rwy 27R or 27L or 28, or Rwy 27R and 28. LNAV procedure NA during simultaneous operations. Use of FD or AP providing RNAV track guidance required during simultaneous operations.



**MISSED APPROACH:**  
Climb to 1500 then climbing right turn to 3500 direct TROYS and hold.

D-ATIS ARR <b>119.65</b>	ATLANTA APP CON <b>127.9 379.9</b>	ATLANTA TOWER 8L-26R 8R-26L 9L-27R 9R-27L 10-28 RWYS <b>119.1 125.325 123.85 119.3 119.5 254.4</b>				ALL RWYS <b>121.9</b>	GND CON (8L-26R, 8R-26L) (9L-27R, 9R-27L) 10-28 <b>121.75 121.65 254.4</b>	ALL RWYS
-----------------------------	--	--	--	--	--	-----------------------------	--	-------------

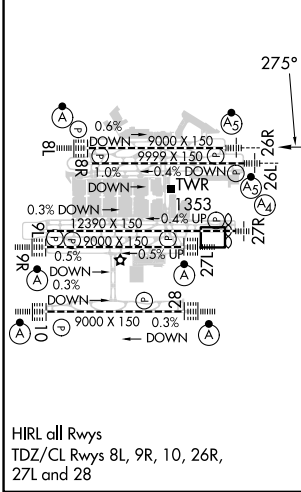


SE-4, 17 APR 2025 to 15 MAY 2025

SE-4, 17 APR 2025 to 15 MAY 2025

ELEV 1026	<b>D</b>	TDZE 990
-----------	----------	----------

## RADAR REQUIRED



1500	3500	TROYS	VGSi and RNAV glidepath not coincident (VGSi Angle 3.00/TCH 69).		HAINZ	ZELOW
*LNAV only.		AJAAY	BAMBU	2700	5000	GP 3.00° TCH 55
*1.3 NM to RWY 26R		2700	4000	5000	275°	
1.3		3.9 NM	5 NM	3.8 NM	6 NM	
CATEGORY	A	B	C	D		
LPV DA		1190/18	200 (200-½)			
LNAV/VNAV DA		1426/50	436 (500-1)			
LNAV MDA	1460/24	470 (500-½)	1460/50	470 (500-1)		