

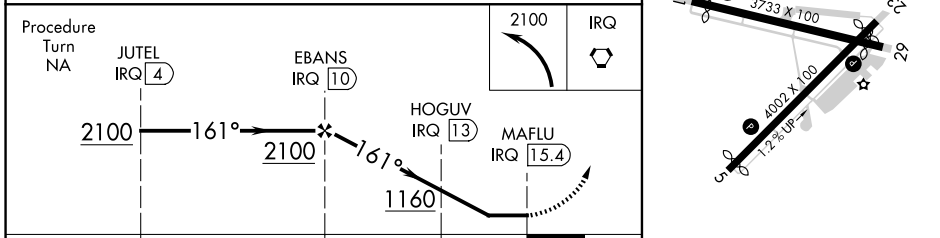
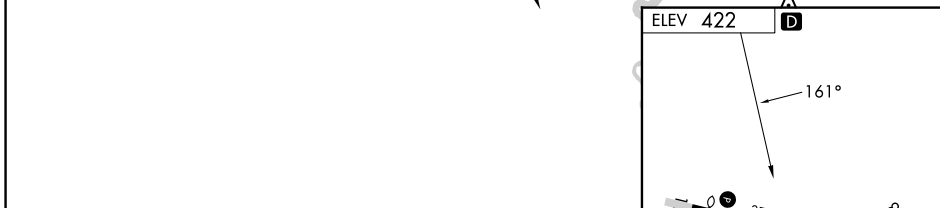
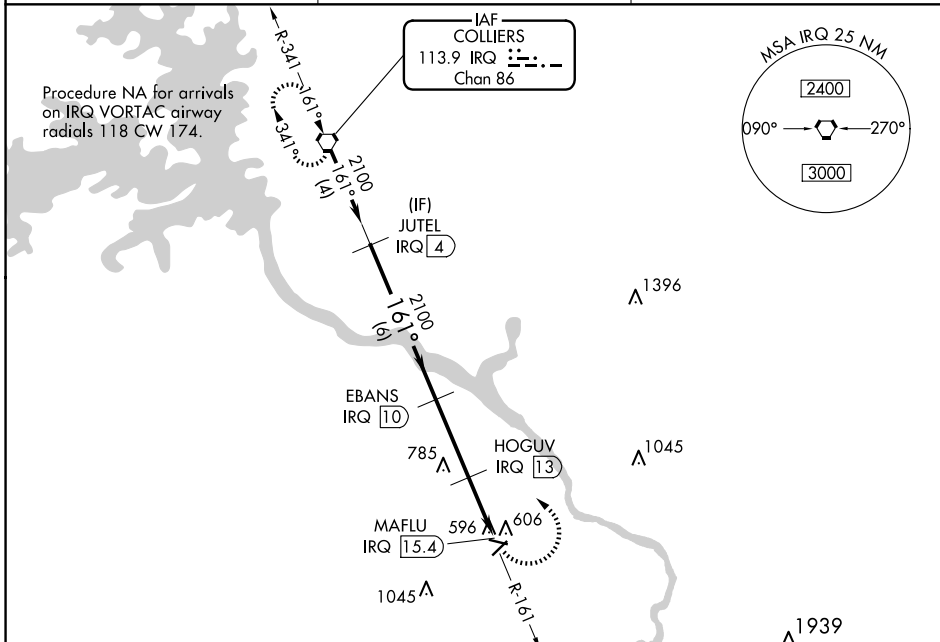
VORTAC IRQ 113.9 Chan 86	APP CRS 161°	Rwy Idg TDZE Apt Elev	N/A N/A 422
--	------------------------	-----------------------------	--

VOR/DME-B
DANIEL FLD (DNL)

⚠ When local altimeter setting not received, use Augusta Rgnl at Bush Fld altimeter setting and increase all MDA 60 feet.
⚠ Procedure NA at night. Helicopter visibility reduction below 1 SM NA.

MISSED APPROACH: Climbing left turn to 2100 direct IRQ VORTAC and hold.

ASOS 135.275	AUGUSTA APP CON ★ 126.8 270.3	UNICOM 123.05 (CTAF) 0
------------------------	---	---



CATEGORY	A	B	C	D
C CIRCLING	920-1 498 (500-1)		1400-3 978 (1000-3)	

REIL Rwy 5, 11 and 23 **0**
MIRL Rwy 5-23 and 11-29 **0**

SE-4, 17 APR 2025 to 15 MAY 2025

SE-4, 17 APR 2025 to 15 MAY 2025