

WAAS CH <b>70720</b> <b>W17A</b>	APP CRS <b>171°</b>	Rwy Idg <b>5002</b> TDZE <b>348</b> Apt Elev <b>352</b>
--	------------------------	---

# RNAV (GPS) RWY 17

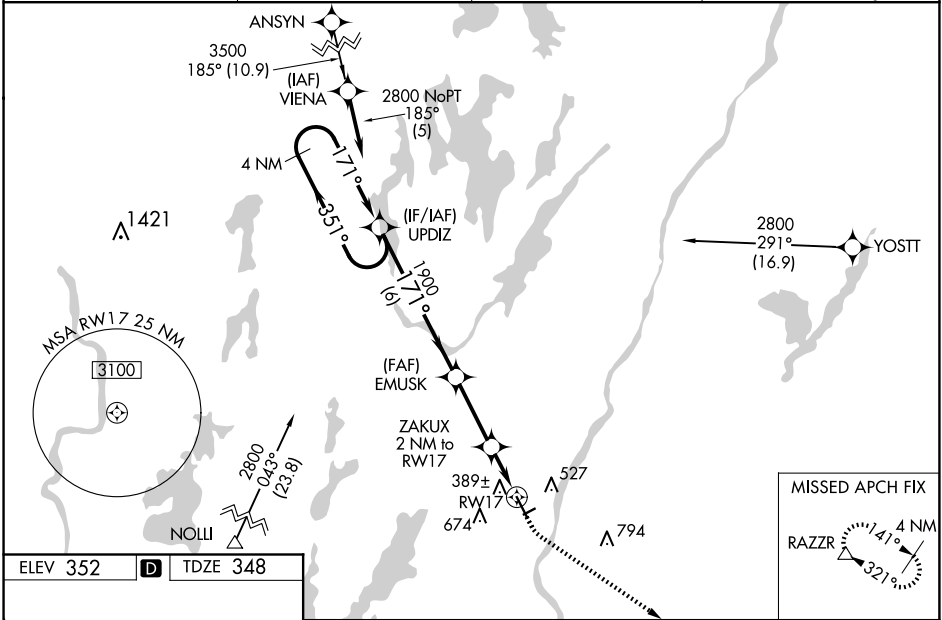
AUGUSTA STATE (AUG)

RNP APCH - GPS.

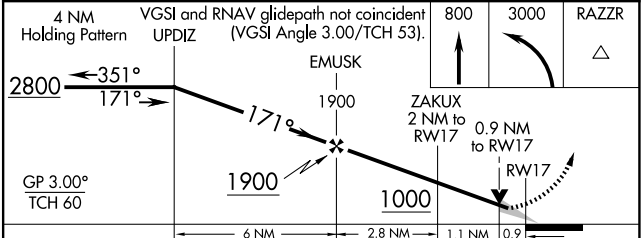
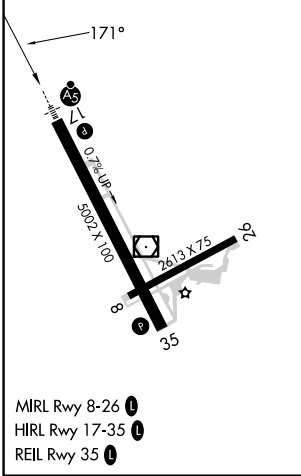
**⚠** For inop MALSRS, increase LNAV/VNAV all Cats visibility to 1 mile. For inop MALSRS when using Waterville altimeter setting, increase LNAV/VNAV all Cats visibility to 1 1/8 mile. VDP and Baro-VNAV NA with Waterville altimeter setting. When local altimeter setting not received, use Waterville altimeter setting: increase LPV DA to 583 feet, LNAV/VNAV DA to 710 feet, and visibility LNAV/VNAV all Cats 1/8 SM; increase all MDA 40 feet and visibility LNAV Cats C and D 1/8 SM, and Circling Cat D 1/4 SM. For uncompensated Baro-VNAV systems, LNAV/VNAV NA below -30°C or above 41°C. Circling Rwy 8, 26 NA at night.

**MALSRS**  
MISSED APPROACH:  
Climb to 800 then climbing left turn to 3000 direct RAZZR and hold.

ASOS <b>118.325</b>	PORTLAND APP CON * <b>128.35 299.2</b>	CLNC DEL <b>119.95 299.2</b>	UNICOM <b>123.0 (CTAF)</b>
------------------------	---	---------------------------------	-------------------------------



ELEV 352	<b>D</b>	TDZE 348
----------	----------	----------



CATEGORY	A	B	C	D
LPV DA		548-1/2	200 (200-1/2)	
LNAV/VNAV DA		675-5/8	327 (400-5/8)	
LNAV MDA		640-1/2	292 (300-1/2)	
<b>C</b> CIRCLING	960-1 608 (700-1)	980-1 628 (700-1)	980-1 3/4 628 (700-1 3/4)	1160-2 1/2 808 (900-2 1/2)

NE-1, 17 APR 2025 to 15 MAY 2025

NE-1, 17 APR 2025 to 15 MAY 2025