

VOR/DME AUG <b>114.95</b> Chan <b>96(Y)</b>	APP CRS <b>354°</b>	Rwy Idg <b>5002</b> TDZE <b>350</b> Apt Elev <b>352</b>
---	------------------------	---

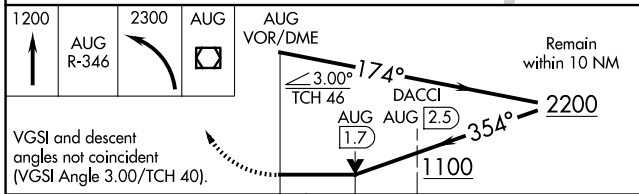
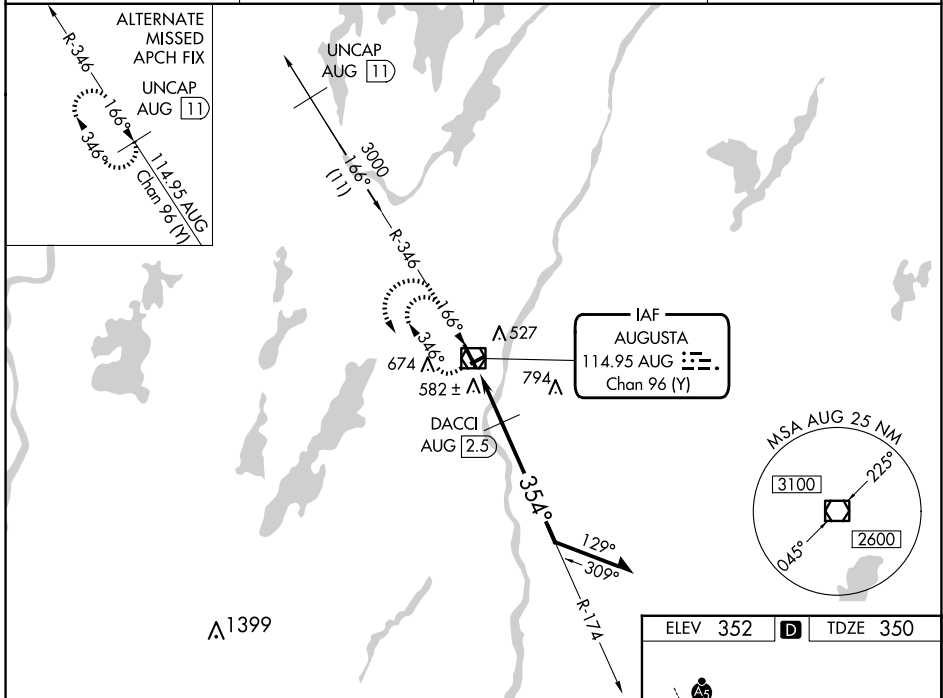
# VOR RWY 35

AUGUSTA STATE (AUG)

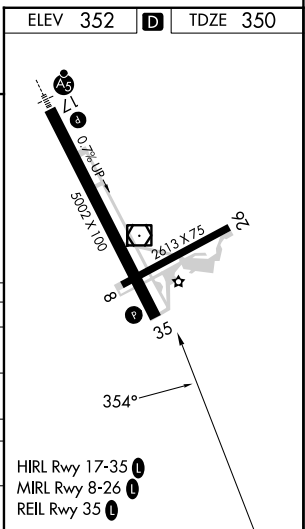
**⚠** Rwy 35 helicopter visibility reduction below 3/4 SM NA. When local altimeter setting not received, use Waterville altimeter setting: increase all MDA 40 feet and visibility S-35 Cats C and D 1/2 SM, and Circling Cat D 1/4 SM; DACCI fix minimums increase visibility S-35 Cats C and D 1/2 SM, and Circling Cat D 1/4 SM. Circling Rwy 8, 26 NA at night.

**MISSED APPROACH:** Climb to 1200 on AUG VOR/DME R-346, then climbing left turn to 2300 direct AUG VOR/DME and hold.

ASOS <b>118.325</b>	PORTLAND APP CON * <b>128.35 299.2</b>	CLNC DEL <b>119.95 299.2</b>	UNICOM <b>123.0 (CTAF) 0</b>
------------------------	---	---------------------------------	---------------------------------



CATEGORY	A	B	C	D
S-35	1100-1 750 (800-1)	1100-1 1/4 750 (800-1 1/4)	1100-2	750 (800-2)
<b>C</b> CIRCLING	1100-1 748 (800-1)	1100-1 1/4 748 (800-1 1/4)	1100-2 1/4 748 (800-2 1/4)	1160-2 1/2 808 (900-2 1/2)
DACCI FIX MINIMUMS				
S-35	840-1	490 (500-1)	840-1 3/8	490 (500-1 3/8)
<b>C</b> CIRCLING	960-1 608 (700-1)	980-1 628 (700-1)	980-1 3/4 628 (700-1 3/4)	1160-2 1/2 808 (900-2 1/2)



NE-1, 17 APR 2025 to 15 MAY 2025

NE-1, 17 APR 2025 to 15 MAY 2025