

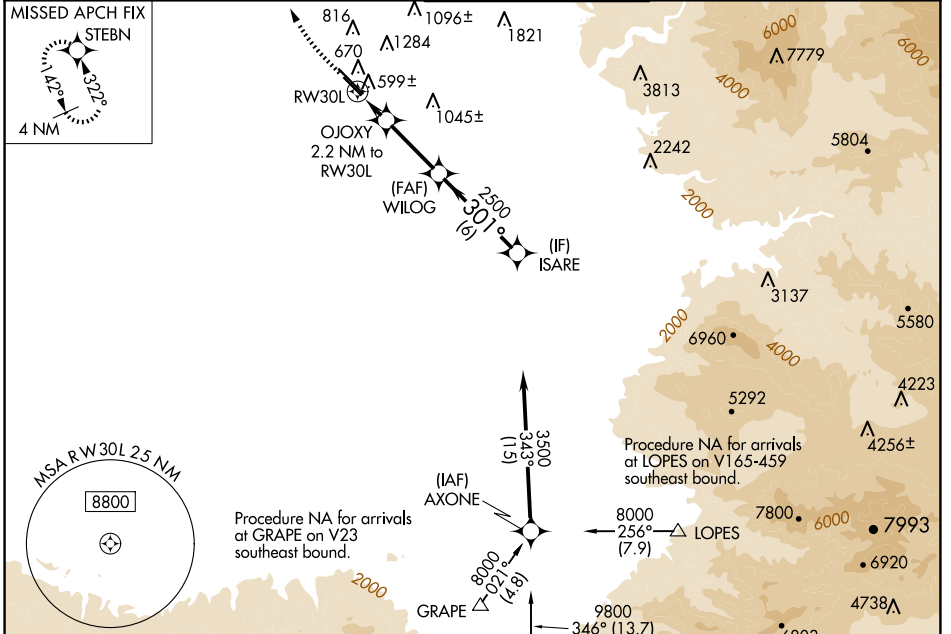
WAAS CH <b>82440</b> <b>W30B</b>	APP CRS <b>301°</b>	Rwy ldg TDZE <b>484</b> Apt Elev <b>510</b>
--	------------------------	--

# RNAV (GPS) RWY 30L

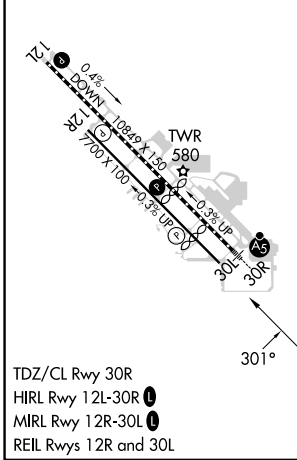
MEADOWS FLD (BFL)

For uncompensated Baro-VNAV systems, LNAV/VNAV NA below -1°C (31°F) or above 54°C (130°F). Circling NA northeast of Rwy 12L-30R.  
 MISSED APPROACH: Climb to 1000 then climbing right turn to 3000 direct STEBN and hold.

ATIS <b>118.6</b>	BAKERSFIELD APP CON ★ <b>118.8 284.625</b> (SOUTH) <b>118.9 270.3</b> (NORTH)	BAKERSFIELD TOWER ★ <b>118.1</b> (CTAF) <b>257.8</b>	GND CON <b>121.7</b>	UNICOM <b>122.95</b>
----------------------	--	---	-------------------------	-------------------------



ELEV <b>510</b>	<b>D</b>	TDZE <b>484</b>	Procedure NA for arrival at GMN VORTAC airway radials 297 CW 328.
-----------------	----------	-----------------	---



1000	3000	STEBN	VGS1 and RNAV glidepath not coincident (VGS1 Angle 3.00/TCH 25).	ISARE
*LNAV only	OJOXY 2.2 NM to RWY 30L	WILOG 2500	301°	3500
	*1.1 NM to RWY 30L		2500	GP 3.00° TCH 50
	1.1 NM	1.1 NM	4 NM	6 NM

CATEGORY	A	B	C	D
LPV DA		734-7/8	250 (300-7/8)	
LNAV/VNAV DA		797-1 1/8	313 (300-1 1/8)	
LNAV MDA		860-1	376 (400-1)	
<b>C</b> CIRCLING	960-1	450 (500-1)	960-1 1/2 450 (500-1 1/2)	1060-2 550 (600-2)