

LOC/DME I-BGR 109.5 Chan 32	APP CRS 330°	Rwy Idg 11440 TDZE 163 Apt Elev 192
---	------------------------	--

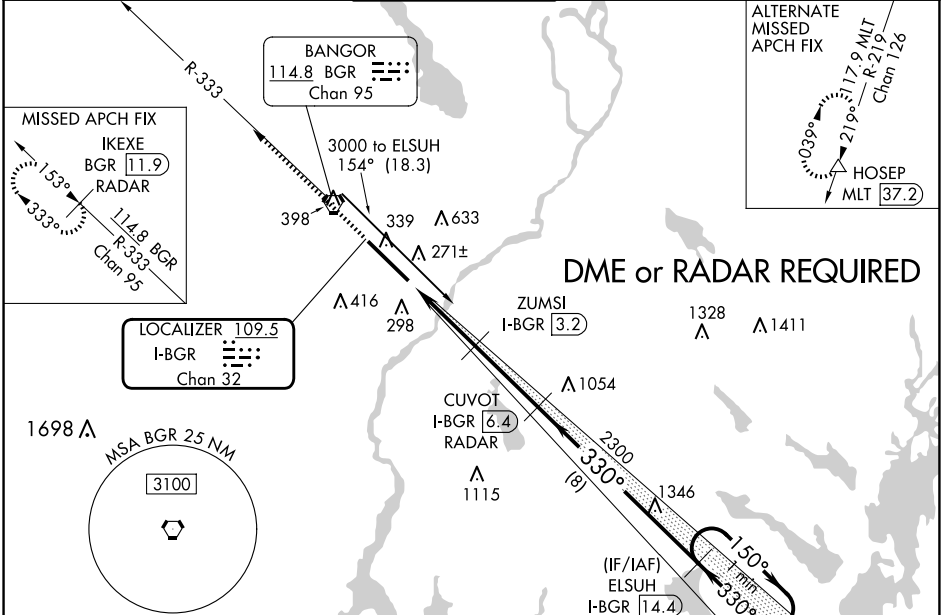
ILS or LOC RWY 33

BANGOR INTL (BGR)

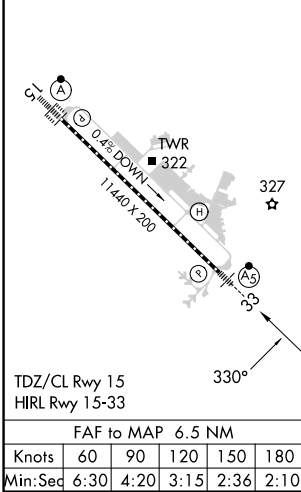
ASR Inoperative table does not apply to S-LOC 33 Cats C/D/E. Circling NA northeast of Rwy 15-33. DME or RADAR required. For inop ALS, increase Cat E S-ILS 33 visibility to RVR 4000. ZUMSI Minimums: For inop ALS, increase S-LOC 33 Cat E visibility to RVR 5000. #RVR 1800 authorized with the use of FD or AP or HUD to DA.

MALSR MISSED APPROACH: Climb to 3000 on heading 330° and on BGR VORTAC R-333 to IKEXE/BGR VORTAC 11.9 DME/RADAR and hold.

ATIS 127.75	BANGOR APP CON 118.925 239.3	BANGOR TOWER 120.7 233.7	GND CON 121.9 348.6	CLNC DEL 135.9 348.6
-----------------------	--	------------------------------------	-------------------------------	--------------------------------



ELEV 192	D	TDZE 163
----------	----------	----------



3000	hdg 330°	BGR R-333	IKEXE BGR 11.9 RADAR	CUVOT I-BGR 6.4 RADAR	ELSUH I-BGR 14.4 RADAR	One Minute Holding Pattern
* LOC only.						GS 3.00° TCH 57
0.9		2.5 NM		3.1 NM		8 NM

CATEGORY	A	B	C	D	E
S-ILS 33	#363/24 200 (200-½)				
S-LOC 33	1300/40 1137 (1200-¾)	1300/55 1137 (1200-1)	1300-3	1137 (1200-3)	
C CIRCLING	1300-1¼ 1108 (1200-1½)	1300-1½ 108 (1200-1½)	1300-3	1108 (1200-3)	
ZUMSI MINIMUMS					
S-LOC 33	500/24	337 (400-½)	500/26	337 (400-½)	
C CIRCLING	640-1 448 (500-1)	720-1 528 (600-1)	740-1½ 548 (600-1½)	820-2 628 (700-2)	880-2½ 688 (700-2½)

NE-1, 17 APR 2025 to 15 MAY 2025

NE-1, 17 APR 2025 to 15 MAY 2025